



[www.ifbappliances.com](http://www.ifbappliances.com)

# **User Manual**

# **CHIMNEY**

**Read the manual carefully before using the chimney**

**CALL ONLY IFB AUTHORISED PERSON TO SERVICE YOUR  
CHIMNEY & USE ONLY GENUINE SPARES IF IN ANY CASE IT'S  
REQUIRE**

**If any protective film is fixed on the product please peel off before using the product**



[www.ifbappliances.com](http://www.ifbappliances.com)

### *Trusted by millions*

Dear Customer,

We welcome you to the proud IFB owner club.

You have just purchased one of the products from our wide range. We thank & congratulate you for your choice, expressing trust for IFB. We are convinced that, as time goes by, you will agree your trust was motivated. The rigour quality standard we have set for our complete range of the products from Washing machines/Cloth Dryers/Dishwashers/Microwaves ovens Air conditioner & Refrigerator for Domestic use & Industrial Dishwashers & Launderette for commercial use at Hotels, Restaurants, Canteens & Housing complexes. IFB is a trusted brand, known for user friendly & convenient products, designed to combine technology and simplicity besides Great Looks & Unbeatable Performance.

With IFB chimney you would enjoy every day, to make delicious food for your family with out any hassle & will keep you as fresh as before the cooking, because IFB chimneys quickly absorbs the smoke and vapours generated by typical Indian cooking.

### **General Information**

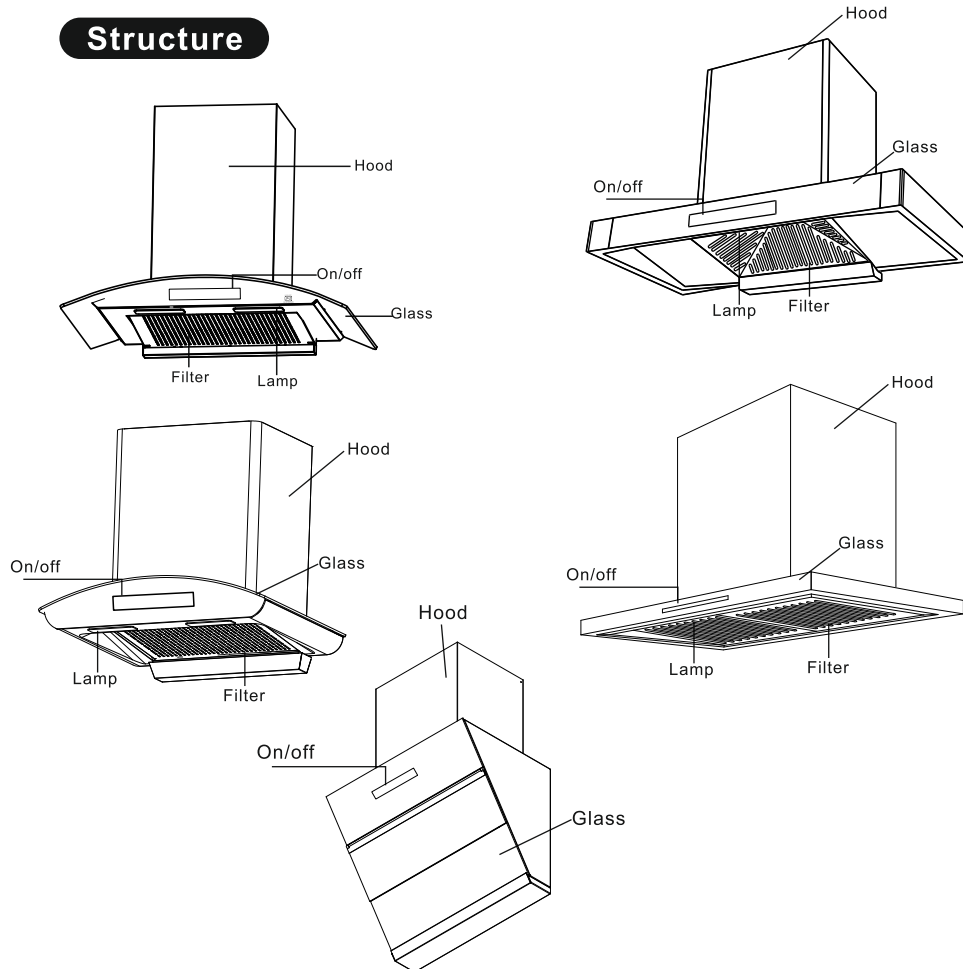
#### **Please read carefully**

This chimney is suitable to install on any rigid vertical space, over a gas or electric hotplate & can be used either in Internal Recirculation mode or outside ducting mode depending on the model. The installation must be carried out by qualified & competent person or IFB authorized person with the thorough knowledge of the parameters concerning the evacuation of the contaminated air. (In conformity to the rules concerning the evacuation of contaminated air if any as of now or in future). The company disclaims all liability for any damage or injury caused as a result of not following the Instructions for installation contained in the text.

## **Content**

Structure & Specification.....	1
Exploded drawing.....	2
Installation.....	4
Function Operation.....	11
Attentions.....	15
Maintenance.....	16
Common faults and solutions.....	17
Precautions/warning & Important.....	18
Warranty terms and conditions.....	19

## Structure

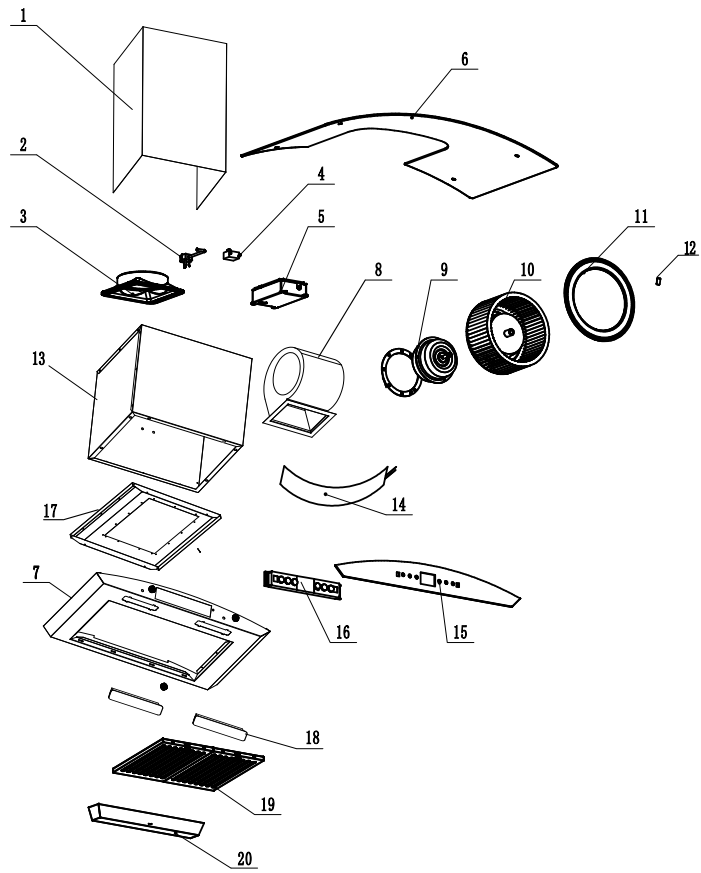


## Specification

Rating Voltage	Rating Frequency	Motor Power	Light Power
AC220-240V	50 Hz	150W	1*15 W
AC220-240V	50 Hz	170W	2*1.5W
AC220-240V	50 Hz	200W	2*1.5W
AC220-240V	50 Hz	130W	1*1.5 W
AC220-240V	50 Hz	90 W	2*1.5 W

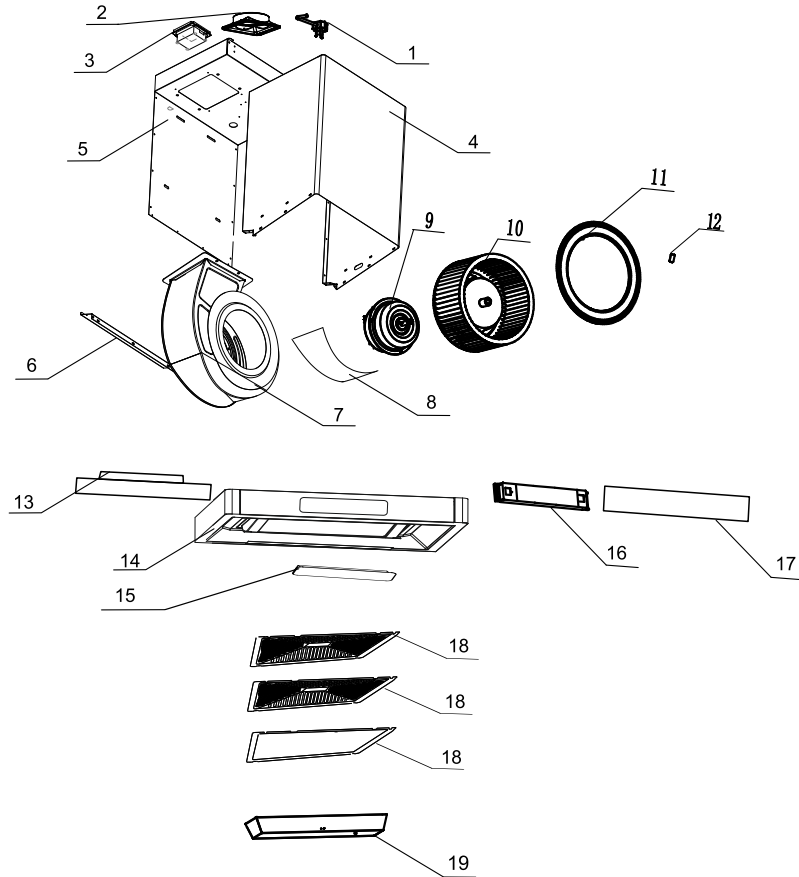
**Note: all specifications are subject to real product.**

## Exploded drawing



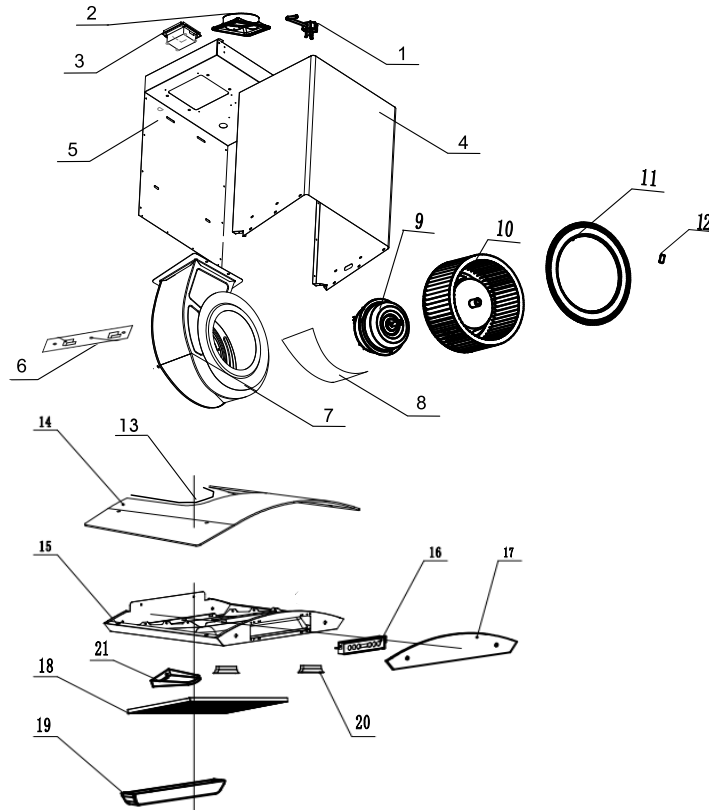
20	Oil collector	1
19	Filter	1
18	LED lamp	2
17	Top plate	1
16	Control PCB	1
15	Front glass	1
14	Heating Strip	1
13	Housing Box	1
12	Nut of blower	1
11	Housing jali	2
10	Blower	1
9	Motor	1
8	Blower housing	1
7	Body	1
6	Big glass	1
5	Main PCB with wire harness	1
4	Capacitor	1
3	Air outlet	1
2	Power cord	1
1	Chimney cover	1

## Exploded drawing



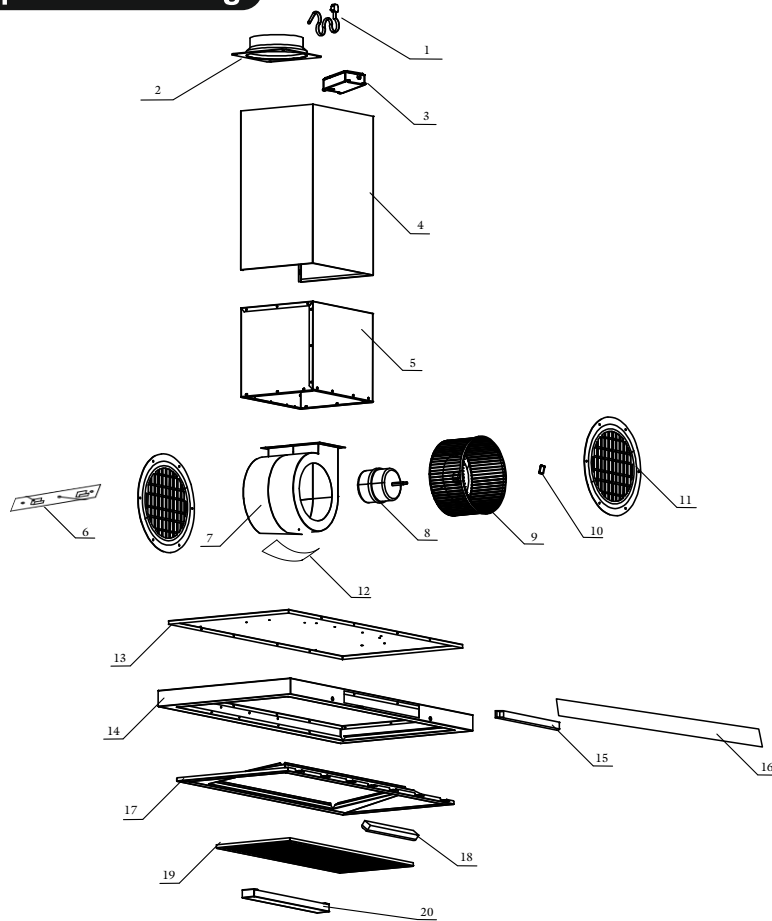
19	Oil collector	1
18	Filter Layer 1+ Layer 2 + Outer Layer	1
17	Front Glass	1
16	Main PCB + Front sensor with wire harness	1
15	LED light	1
14	Body	1
13	Body Back plate	1
12	Nut of blower	1
11	Housing jali	1
10	Blower	1
9	Motor	1
8	Heating Strip	1
7	Motor Housing	1
6	Chimney cover Back plate	1
5	Motor plate	1
4	Chimney cover	1
3	PCB Plastic box	1
2	Air outlet	1
1	Power cord	1

## Exploded drawing



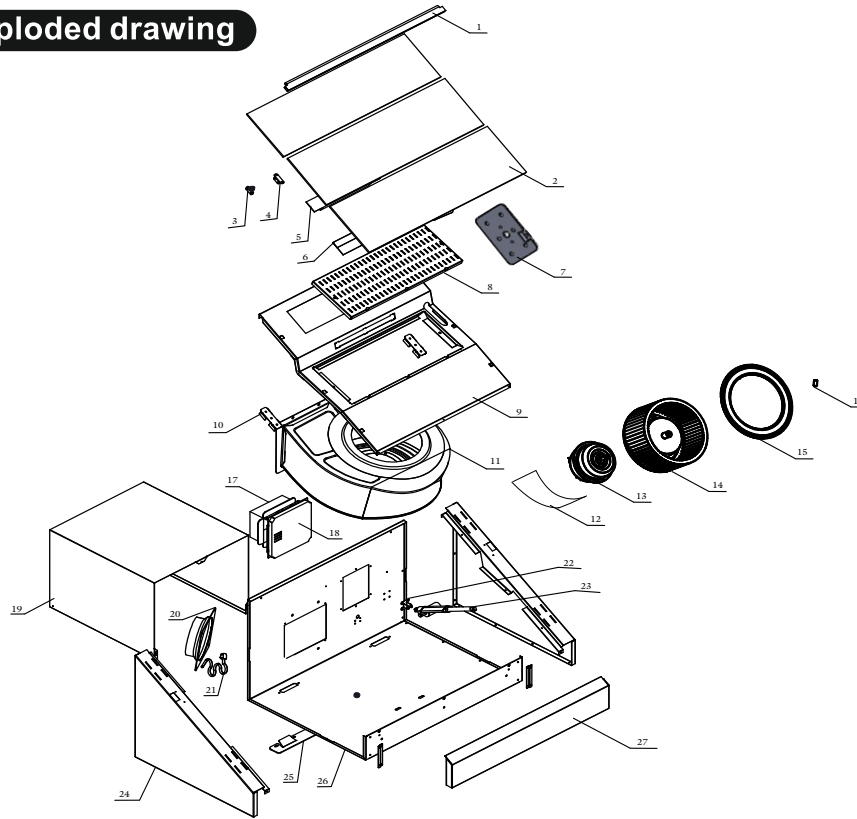
21	Oil Channel	1	
20	LED light	2	
19	Oil collector	1	
18	Filter	1	
17	Front Glass	1	
16	Main PCB + Front sensor with wire harness	1	
15	Body	1	
14	Top Glass	1	
13	Rubber beeding	1	
12	Nut of blower	1	
11	Housing jali	1	
10	Blower	1	
9	Motor	1	
8	Heating Strip	1	
7	Motor Housing	1	
6	Hanging plate	1	
5	Motor plate	1	
4	Chimney cover	1	
3	PCB Plastic box	1	
2	Air outlet	1	
1	Power cord	1	

## Exploded drawing



20	Oil collector	1
19	Filter	1
18	LED light	1
17	Light grid	1
16	Front glass	1
15	Main PCB + Front sensor with wire harness	1
14	Main Body	1
13	Top plate	1
12	Heating Strip	1
11	Plastic Mesh	2
10	Nut of Blower	1
9	Blower	1
8	Motor	1
7	Motor Housing	1
6	Hanging Plate	1
5	Housing Box	1
4	Chimney cover	1
3	PCB Plastic Box	1
2	Air outlet	1
1	Power cord	1

## Exploded drawing

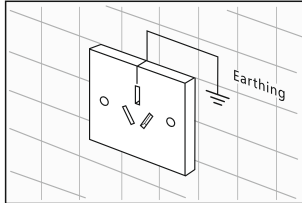


27	Oil collector	1
26	Main body	1
25	Hanging plate	1
24	Body Sides	1
23	Hydraulic	1
22	Hydraulic U clamp	1
21	Power cord	1
20	Air outlet	1
19	Chimney cover	1
18	Plastic PCB Box	1
17	PCB Box metal cover	1
16	Nut of blower	1
15	Plastic mesh	1
14	Blower	1
13	Motor	1
12	Heating Strip	1
11	Motor Housing0	2
10	Slider lock	1
9	Light grid	1
8	Filter	1
7	Hydraulic Glass pasting clamp	1
6	Glass support plate	1
5	Main PCB + Motion sensor with wire harness	1
4	Aluminium panel holder clamp	1
3	Aluminium panel holder	1
2	Glasses	1
1	Aluminium panel	1

## Installation

### 1. Installation

Please do not contact the steel and wires of wall inside in order to avoid electric shock.



- The range hood must have earthing. It has a 3-pin plug. The plug must be connected to a socket with earthing. The earthing could offer an electricity circuit to avoid electric shock in case of electricity leakage.

- Please make sure the electricity supply system in your home (current, voltage, connecting wires) can meet the requirements of range hood's normal supply load.

- Please do not use high capacity fuse in electrical circuit and select the correct ones as required on rating label.

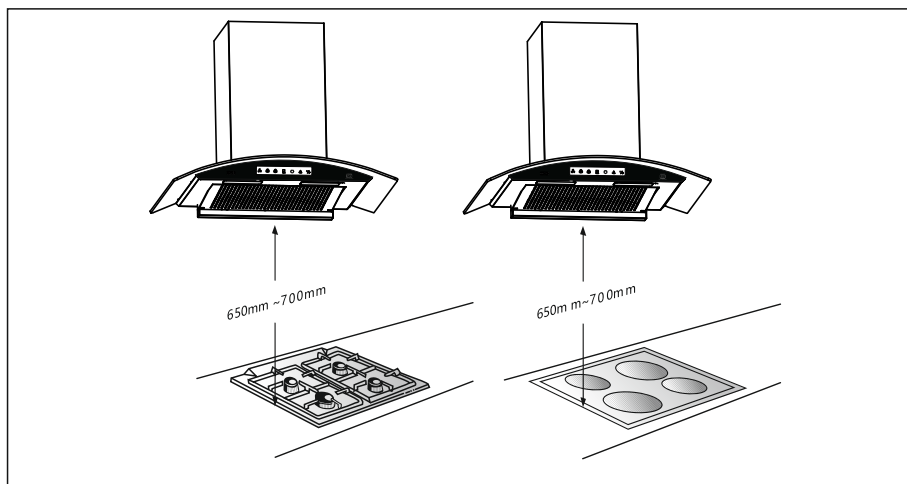
### 2. Preparation and confirmation before installation

- Wall strength

The wall that the range hood is placed must be hard enough to bear the weight of range hood.

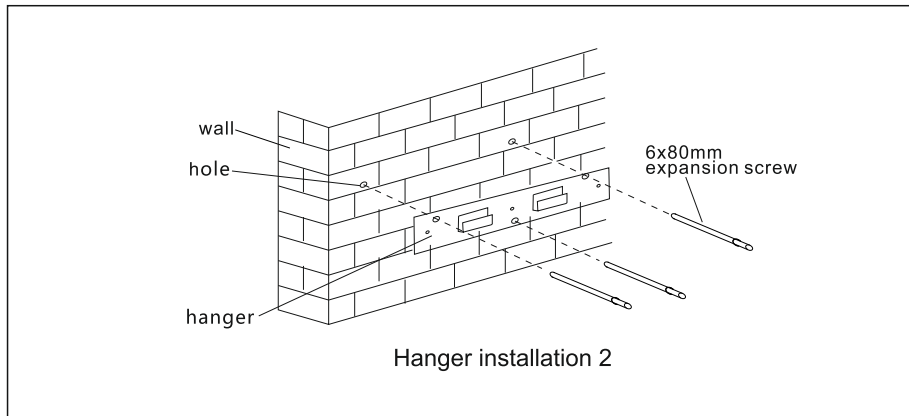
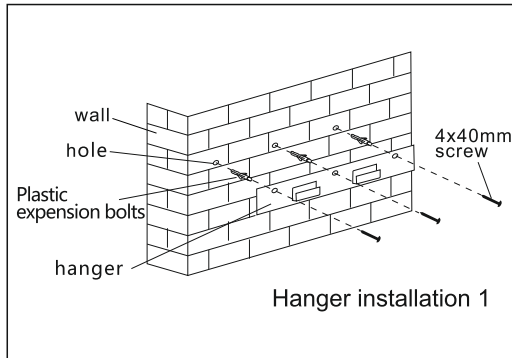
- Height of mounting

The suitable height of mounting shall be 650-700mm above the cooking stove. The real installation height is subject to the construction of kitchen and user's height. The installation instruction of gas stove has given the suitable installation distance, please take it into consideration.



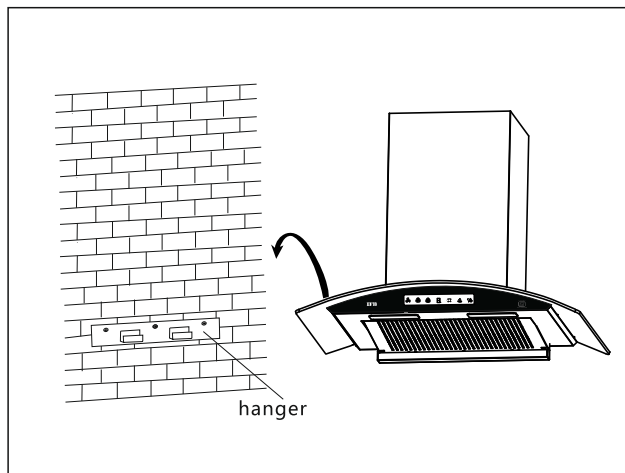
### 3. Installation hanger

Measure the installation height.  
Mark the position of hanger on the wall---Drill holes for fixing hanger---Punch plastic expansion bolts into the holes---Fix the hanger.

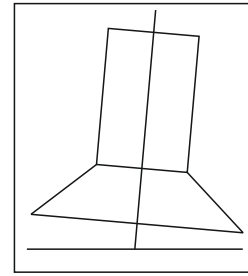
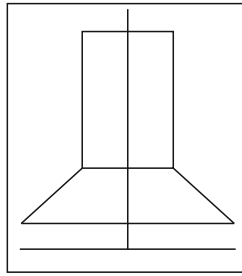


### 4. Product installation (single hood)

- Aim at the hanger and hang the range hood up on the wall.
- Connect the one end of exhaust pipe diameter 153mm to exhaust hole of range hood and the other end connect to air outlet.

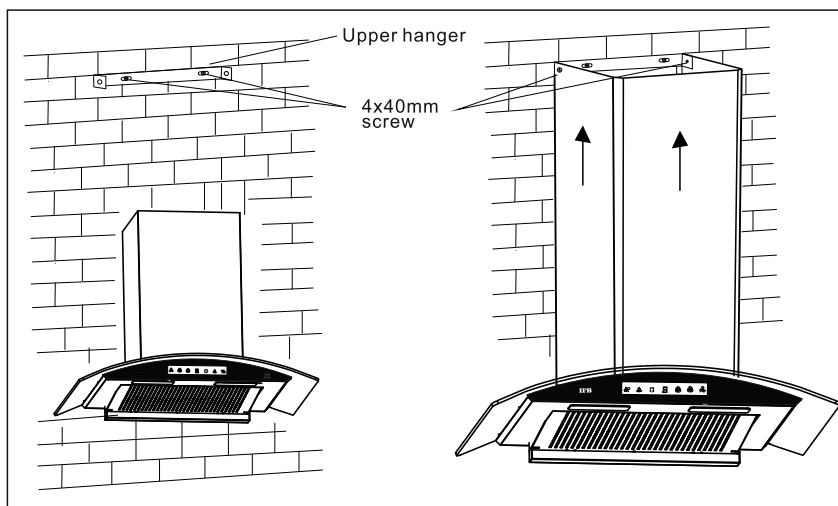


**Note: Make sure the range hood is hanging vertically and horizontally. Do not hang it on the tilt way.**



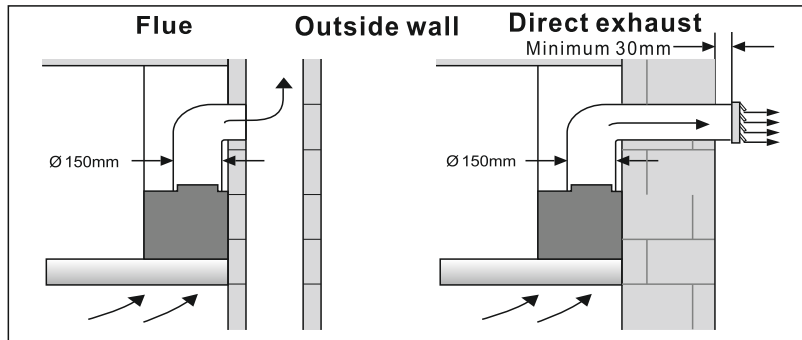
### 5.Product installation ( double hoods )

- Loose screws Aim at the hanger and hang the range hood on the wall---Pull the upper hood to the proper position---Mark the position of upper hood screw holes at upper side on the wall---Put upper hood back---Make the position of upper hanger side holes---Mark the position of two middle holes of upper hanger.
- Put down the range hood--- drill holes on markings--- insert plastic expansion bolts---fix upper hanger---install exhaust pipe on exhaust outlet---hang up the range hood--- connect the exhaust pipe to air outlet of kitchen ---pull the upper hood upwards and fix the side holes with screws.



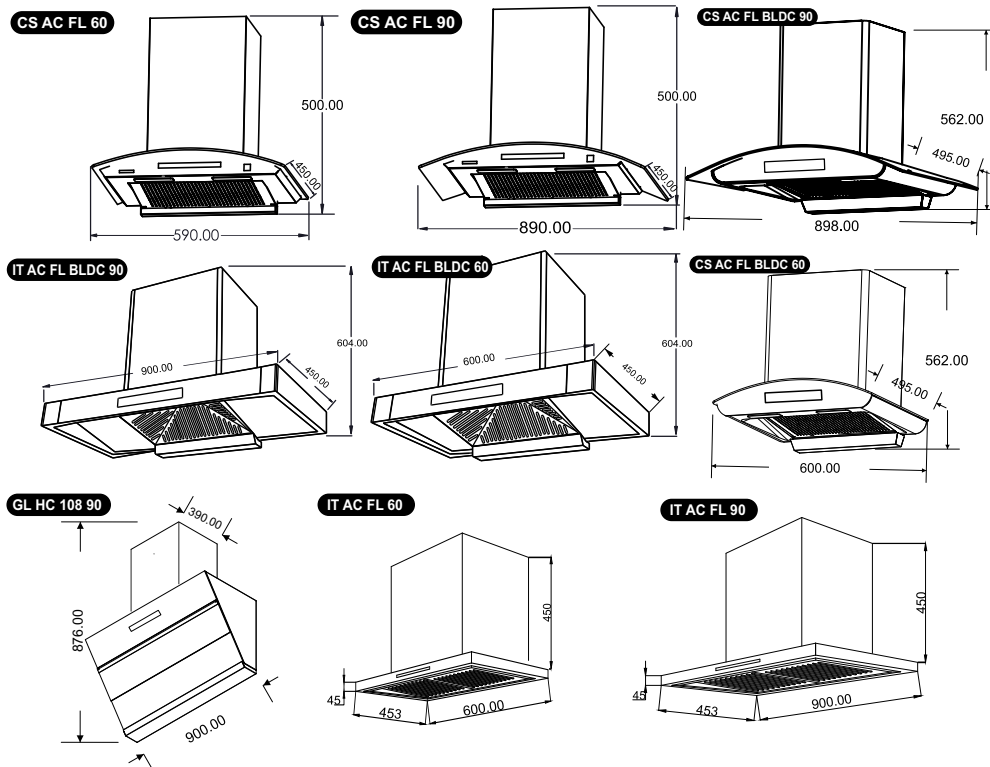
## 6. Exhaust pipe connecting to the wall outside

The other head of exhaust pipe shall be connected to the flue or the hole of wall outside (diameter of hole shall be 85mm).



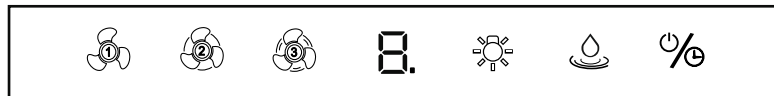
## 7. Confirmation of installation

After installation, connect to power supply and turn on the range hood. Check if all functions of range hood are working normally; no abnormal vibration and no resistance to leaves of air outlet.



### Autoclean Touch Control Operation - Type 1

This cooker hood is operated with a gesture control and a feather touch control panel.



#### Touch control:

- Place your finger on the “%” button, the lights on the control panel will glow on and the cooker hood is now in stand-by mode.
- Place your finger one more time, on “%” button, the cooker hood will be turned off.
- Touch “1” button, the cooker hood will start operating on LOW speed.
- Touch “2” button, the cooker hood will start operating on MEDIUM speed.
- Touch “3” button, the cooker hood will start operating on HIGH speed.
- Touch the “☀️” button, the lights will turn on. Repeat this action, the lights will turn off.
- Touch the “💧” button for 3 seconds. The heat auto clean function will be started.
- This chimney model is equipped with an intelligent Autoclean function. After 30 cycles of operation (power on/off), the Autoclean process will activate automatically, ensuring optimal performance and hassle-free maintenance.

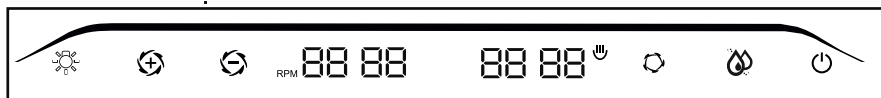
#### Gesture control:

Gesture control is the ability to recognize and interpret movements of the human body in order to interact with and control a PCB system without direct physical contact. Which can avoid poor touch caused by oil/grease on hand. Put your hand up in front of the sensor area, reasonable distance is: 50mm, then start to control cooker hood by hand gesture:

- 1) Hand waved left to right for the first time - Chimney starts at low speed and light will glow.
- 2) Hand waved left to right for the second time - chimney speed changes to medium.
- 3) Hand waved left to right for the third time - chimney speed changes to high.
- 4) If the hand is waved left to right again the chimney will follow above three processes respectively
- 5) Hand waved right to left - A three minute delay timer will start. After three minutes the chimney will shut down automatically. Repeat the same motion again to turn off the chimney.

### Autoclean Touch Control Operation - Type 2

This cooker hood is operated with a gesture control and a feather touch control panel



- Place your finger on the “⏻” button, the light on control panel will glow
- Place your finger one more time, on “⏻” button, the cooker hood will be turned off
- Touch “↻” button to increase the speed of the chimney. The chimney has 9 speed option from F1 to F9.
- Touch “↺” button to decrease the speed of the chimney.
- With every speed change the display will show speed level at right hand side and RPM at left hand side, and this cycle will continue.
- In case of heavy smoke touch the “⤿” button to turn the chimney in turbo speed. After 3 minutes of running in Turbo speed the chimney will return to its initial speed.
- Touch the “💡” button to turn on the light. Repeat this action again to turn off the light
- Touch the “💧” button for 3 seconds the Autoclean process will start.
- Long touch the “⏻” button for 3 seconds in stand-by mode. The gesture control function will be locked. Repeat this action, it will be turned on.

#### Gesture Control:

- Hand waved from left to right the chimney will turn on 1th speed and light is turned on. Further every wave from left to right the chimney will keep increasing the speed and speed cycle (1st speed to 9th speed) continues.
- Hand waved from right to left the chimney a delay timer on one minute will be activated after that chimney will be automatically turned off. Repeat the motion again to turn off the chimney immediately.

#### Delay

A unique "Delay" shut -OFF function has been provided in this cooker hood. Once the cooking is over, instead of switching off the appliance, touch the "⏻" button while motor is running. A reverse timer of 1 minutes will get activated and the chimney will shut itself off after the end of this 1 minutes. Touch the power button "⏻" anytime to turn off the chimney.

### Autoclean Touch Control Operation - Type 3

This cooker hood is operated with a gesture control and a feather touch control panel.



This cooker hood is operated with a gesture control and a feather touch control panel

- Place your finger on the “☰” button, the light on control panel will glow
- Place your finger one more time, on “☰” button, the cooker hood will be turned off
- Touch “⬇️” button to increase the speed of the chimney. The chimney has 10 speed option from L1 to L10.
- Touch “⬆️” button to decrease the speed of the chimney.
- With every speed change the display will show the speed level for 3 seconds and after that the display will show the RPM level of the chimney. Again after 10 seconds the display will show the speed level and this cycle will continue.
- In case of heavy smoke touch the “🌀” button to turn the chimney in turbo speed.
- Touch the “☀️” button to turn on the light. Repeat this action again to turn off the light.
- Touch the “💧” button for 3 seconds the Autoclean process will start.
- This chimney model is equipped with an intelligent Autoclean function After 30 cycles of operation (power on/off), the Autoclean process will activate automatically, ensuring optimal performance and hassle-free maintenance.

Gesture Control:

- Hand waved from left to right the chimney will turn on 1th speed and light is turned on. Further every wave from left to right the chimney will keep increasing the speed and speed cycle (1st speed to 9th speed) continues.
- Hand waved from right to left the chimney a delay timer on one minute will be activated after that chimney will be automatically turned off. Repeat the motion again to turn off the chimney immediately.

Delay

A unique "Delay" shut -OFF function has been provided in this cooker hood. Once the cooking is over, instead of switching off the appliance, touch the "☰" button while motor is running. A reverse timer of 1 minutes will get activated and the chimney will shut itself off after the end of this 1 minutes. Touch the power button "☰" anytime to turn off the chimney.

#### Autoclean Touch Control Operation - Type 4

This cooker hood is operated with a gesture control and a feather touch control panel.



#### Touch control:

- Place your finger on the “ ⏻ ” button, the lights on the control panel will glow on and the cooker hood is now in stand-by mode.
- Place your finger one more time, on “ ⏻ ” button, the cooker hood will be turned off.
- Touch “ 🌀 ” button, the cooker hood will start operating on LOW speed.
- Touch “ 🌀 ” button, the cooker hood will start operating on MEDIUM speed.
- Touch “ 🌀 ” button, the cooker hood will start operating on HIGH speed.
- Touch the “ ☀️ ” button, the lights will turn on. Repeat this action, the lights will turn off.
- Touch the “ 🌀 ” button for 3 seconds. The heat auto clean function will be started.
- This chimney model is equipped with an intelligent Autoclean function After 30 cycles of operation (power on/off), the Autoclean process will activate automatically, ensuring optimal performance and hassle-free maintenance.

#### Gesture control:

Gesture control is the ability to recognize and interpret movements of the human body in order to interact with and control a PCB system without direct physical contact. Which can avoid poor touch caused by oil/grease on hand. Put your hand up in front of the sensor area, reasonable distance is: 50mm, then start to control cooker hood by hand gesture:

- 1) Hand waved left to right for the first time - Chimney starts at low speed and light will glow.
- 2) Hand waved left to right for the second time - chimney speed changes to medium.
- 3) Hand waved left to right for the third time - chimney speed changes to high.
- 4) If the hand is waved left to right again the chimney will follow above three processes respectively
- 5) Hand waved right to left - A three minute delay timer will start. After three minutes the chimney will shut down automatically. Repeat the same motion again to turn off the chimney.

stuck inside the cooker hood.

In order to eliminate this stubborn grease and clean the cook hood from inside, we have designed this unique feature.

This new generation auto-clean function works with the help of specially designed heating element fixed within the hood.

Please make sure that the cooker hood is in stand-by model. Now touch the "Auto-Clean" button on the panel. A reverse timer of 10:00 minutes will get activated and the light for auto-clean will start blinking.

After the special heater has worked for 9 minutes, the fan will automatically start operating at low speed for the balance remaining 1 minute.

Most of the grease present within the cooker hood will get evaporated and blown out of the air-outlet. Any remaining grease will get drained out into the oil collector tray, located at the back of the filter.

The auto-clean function will stop operating at the end of 10 minutes.

Wait for a moment and then carefully remove the oil collector tray ensuring that you do not spill the grease.

Drain the collected grease into a sink and clean the oil collector tray with a soft cloth.

Fix the oil collector tray back at its place by sliding it in the rails at both the ends. Ensure that the tray is fixed properly.

Your cooker hood is clean as new from inside now.

### **Delay**

A unique "Delay" shut-off function has been provided in this cooker hood.

Once the cooking is over, instead of switching off the appliance, touch the "ON/OFF" button or put your hand up in front of the sensor area and move from right to left. A reverse timer of 3 minutes (2mins, 1min optional) will get activated and the cook hood will shut itself off after the end of this 3 minutes (2mins, 1min optional). If touch the "ON/OFF" button or move your hand from right to left twice, the cooker hood will be turned off at once.

### **Attention**

- Voltage and frequency must be complied with requirements of product. Supply socket must have reliable earthing.
- Make sure the installation of product is not connected to the steel and wires of wall inside in order to avoid electric shock.
- The wall must have sufficient strength to support the weight of range hood.
- Range hood shall be installed in horizontal level.  
than 1.5m. When install the exhaust pipe, the air outlet shall not be too high
- The distance between exhaust hole and air outlet on the wall shall be less to avoid oil flowing backwards.
- Range hood shall be used when gas or other fuels burning. The room must be well ventilated.

- Do not bark rang hood directly. Gas burning without cooking or burning on the pan is forbidden.
- The air exhaust from range hood should not be exhausted to the flue of burning gas or other fuels.
- In case power cord is damaged, it shall be repaired by professional personnel or sent back to the appointed maintenance centre of our company for repair.
- Power supply must be cut off before changing lamps. New lamps must be the same specification as the current ones.
- Clean the oil on filter regularly. And clean the oil on wind wheel and volute or other components if necessary. If not follow the instruction in manual to clean range hood, it might cause fire hazard.
- Wear rubber gloves when clean range hood in order to prevent the injury of metal.
- It should be careful when clean the impeller to prevent deformation of impeller or rubbing off the counterweight, which might affect the balance, cause noise and vibration.
- It is strictly to prevent water seepage into switches, motor, lamps and other electric components when clean range hood.
- Non professional personnel are forbidden to change the internal wiring.

## Maintenance

### Maintenance

#### 1.Suggestion

- Clean the surface of shell every three days.
- Clean the oil on filter regularly.
- Full maintenance shall be done every half year. It should not be implemented by non professional personnel.

#### 2.When doing internal maintenance, the following steps shall be followed:

- Shut off power supply.
- Take off filter and cleaned by soft brush. Put it back in place after drying for next maintenance.
- Pull out smoke cover oblique upwards. Unscrew air inlet cover and air frame and take it off. Loosen the knob clockwise. Hold the wheel axle and pull out the impeller. Immerge the impeller into cleaning fluid around 10 minutes. Clean the oil on impeller with soft brush. Non professional personnel are not allowed to implement.
- Put impeller back in place. Tighten the knob counter clockwise. Then install air inlet board, air inlet cover and smoke cover in order.

**To keep the range hood working in good condition for long term, please keep maintenance regularly.**

## Common faults and solutions

If there are any abnormal phenomenon happened during range hood working, please stop using and unplug power supply and check the faults. Non professional personnel are not allowed to dismantle range hood. The common faults and diagnosis are as follow:

Fault	Reason	Solution
Lamp is not on Motor is running	Poor wire connect	Repair or change wires
	Lamp is damaged	Change lamp
	Poor connect between lamp and socket	Repair or change
	The quartz lamp transformer burning out	Change transformer
Lamp is not on Motor is not running	Poor connect between plug and socket	Repair or change
	Power cord break	Change power cord
	Fuse of power board breaks	Change fuse
Lamp is on Motor is not running	Thermal cutout of motor is working	Wait for a while and turn on again
	Condenser burns	Change condenser
	Motor burns	Change motor
	Faults of power board and control board	Contact maintenance center
Violent vibration, noise increases	Check the hanging is strong enough	Hanging range hood firmly
	The connecting pieces of the fixed screws are loose	Tighten screws
	Volute standing fixed screws are loose	Tighten screws
	Motor fixed screws are loose	Tighten screws
	Impeller installation is not in place	Install in place
	Impeller is damaged and balance piece is lost	Change impeller
Poor suction	Too much oil on filter	Clean filter
	The air convection in the kitchen is too big or space sealing is too tight	Reduce air convection and open doors and windows moderately
	Higher installation height	Adjust to appropriate height
	Exhaust pipe is too long or too more turns	Install according to the manual
	Outdoor wind is too strong	Non technical faults

## Precautions/warning

(DO'S&DON'T)

Connect the chimney to the mains using a double pole switch, with proper earthing which corresponds with the rated voltage of the chimney. In case of doubt please contact authorized IFB person.

- The ducting system of this appliance should not be connected to any other ventilation system which is used for any other appliance of the same type, any other type or for any other purpose.
- This appliance is not intended for use by persons (including Children) with reduced physical, sensory or mental capabilities or lack of experience & and knowledge, unless they have been given supervision by a person responsible for their safety.
- Do not leave (unattended) naked flames or flambe cooking under this cooker hood.
- Children should be supervised to ensure that they do not play with the appliances.

**When using the gas hob/Cook Top with connection with chimney never leave the burners of the hob/cook top uncovered while the chimney is in use or the pans have been removed from the burners (switch off the burners before removing the pans).**

**Special care has to be given while frying, never leave the frying pan unattended as overheated oil may (burst into flames) catch fire.**

The chimney has been designed for domestic kitchen use only, never use it for any other purposes or commercial use .

Adjust the flame intensity to direct it onto the bottom of the pan only ,making sure that it does not engulf the sides. This will not only save(Gas Consumption) energy but its important for your own safety also.

If the place where the chimney is installed contains others appliances like central heating plant/water heating plant, ducting should not be connected to a flue (duct) which is used for exhausting fumes from these appliances. In case chimney is used in conjunction with others appliances use energy other than electric supply, the negative pressure in the room must not exceed 0,04 mbar to prevent fumes being thrown back into the room by the chimney. Flue of these appliances must be of the room sealed or balance flue type & ensure adequate supply of air in the room.

## Important

**If you will follow the recommendations/instructions contained in this instruction manual, your appliances will give constant high performance and will remain efficient for many years to come. There could be possible fire hazard if you don't follow the instructions for cleaning/replacing the filters according to these instructions.**

**IFB declines all responsibility for any damage or injury caused as a result of not following the instructions(in order to avoid a possible risk of fire when the filters are saturated with Oil (grease).**

**IFB does not guarantee for possible inexactitudes due to printer or transcription contained in this booklet & reserves the right to change any Specifications which is necessary or useful without Prior notice.**

## Warranty Terms & Conditions

### Valid for / Built in Hobs/Cook Tops/ Cooking Ranges/Built in Ovens/Cooker Hoods

IFB Industries Ltd. ("The Company") warrants to the original domestic purchaser of the above mentioned products ("Appliances") that it is free from defect in workmanship and materials. During the warranty period as mentioned below the new machine, all the parts of the machine excluding the consumable components listed in the Limitations of Warranty shall be replaced/ repaired free of charge on intimation to the company/ company authorized service centre nearest to the place where the appliance is installed.

The warranty period for all the above mentioned products vary from products wise & model wise, please ref the table at end of the warranty terms for exact period of the each product category/models, Manufacturing defects, will be rectified free of cost during the said period. However normal applicable repairing cum visiting charge would be applicable after one year in case warranty period is more than one year this warranty is subject to Limitations of Warranty.

#### Limitations of the Warranty

The warranty becomes null and void in following cases:

If the warranty card is not fully and properly filled in and signed at the time of purchase/ installation by the company's authorized Dealer/ Service Engineer. Original Bill/ Invoice are mandatory to avail the warranty.

If the completed warranty card is not presented to the authorized IFB personnel at the time of repair.

This warranty extends only to the first consumer purchaser, and is not transferable.

Service / Repairing or use of non-genuine Spares/ Modification carried out by person other than those authorized by IFB.

Failure/damage due to user's negligence towards minor maintenance such as cleaning of Filters, burners/Spark plug or not used in accordance with instructions given in the instructions manual for various products category mentioned above.

If the Appliance /Components Serial No. Sticker/Plate is removed/ missing/altered/tampered.

Appliances taken out of India.

Damages occurred due to improper electric circuits outside the Appliance & failure due to erratic power supply.

Failure/damage done to the appliance due to operation/uses in an abnormally corrosive Alkaline / Acidic atmosphere, and or use of harmful chemicals.

If defects/damage arise with optional accessories like Extended Power Supply Cable/Frame etc thereof.

Failure/damage due to misuse/negligence/accidents/abuse, action of pests/rodents, fire, flood, earthquake, lightning or any other act of nature/natural calamities & damages traceable to alteration or unauthorized repairs.

Parts replaced or repaired under this warranty are warranted throughout the remaining of the original warranty period only.

Company is not liable for any delay in servicing due to the reason that it is beyond the control of the company or any of its authorized service network.

The decision of IFB with regards to the settlement of all claims under this warranty shall be final. Any disputes subject to Calcutta court and or / other judicial/ or quasi judicial forums having jurisdiction over the registered office of the Company

Company Decline any responsibility due to any printing error

Product	Model	*Warranty period
Built-in-Hob	All models except Brass Burner	*1 year
Built-in-Hob	Brass Burner Series	*5 year
Built-in-Oven	All models	*1 year
Cooking Range	All models	*1 year
Built In MWO/ Built In DW	All models	* As mention in Wty term in their respective product manual
Chimney	CS AC FL P 60	*2 year
Chimney	N-3 Black / SS Olimpia, Condor C-1-, Multipla,D2, Arco, GI-14T-GL-10PL-GS-T-PL GL-90 Island, SS-63P-/ GL-932 , SS -63P GI-6P, N-5 Black & SS, Olim Olim Plus Olim Super, GI 12TS-60/90 SS-EPT SS-64 P GI-15EP, 615-S-48, GL-HC105-90, GL HC105-60 GS HC 104-90CM/N-6BK / SS-BF-60 EPT BF-BK -60/90 Olim Baffle Filter Series All HC Series/ EC-BS-60 BF60 / EC-BS-90BF, IT AC FL BLDC 90 CS AC FL 60, CS AC FL 90, CS AC FL BLDC 60 CS AC FL BLDC 90, IT AC FL 60, IT AC FL 90 GL HC 108 90	*5 year

\*Please ref the Details warranty terms & condition ( Wty- Mean Warranty)

\*CS AC FL 60/90, CS AC FL P 60, IT AC FL 60/90, CS AC FL BLDC 60/90 & GL HC 108-90 motor and PCB warranty for 2 years only.

IFB Resave the right to change the manual any time, company declines any responsibility due to printing /Spelling/ Grammatical error. Any charges mentioned for service or warranty charges or any other charges if mention subject to change without prior notice. All taxes levies extra – as per Central Govt /state Govt/ Municipal bodies/Cantonment board/ Panchayat or any other body approved by any Govt what so it may be today or in the future

This warranty does not cover defects resulting from the accidents or damage while in transit or to our Service Centre .

This warranty does not cover for consumables in all the product categories for example bulbs. (Any kind/ Type of Charcoal Filter, Metal Filters, Net Filter or any other material filter ,may be called by other name however used for the purpose of filtration) Spark Plugs any kind of pipe made of any material if supply with Cooker hood or other products categories.

All glass & Glass fitment parts, knobs, outer body/ body parts including the, Duct cover & any type of painting, plating/ denting enameling including rusting etc. or defects thereof is not cover in the warranty across all product categories.

Peeling off, De-coloration, losing it original texture/shine of any type of black paint/ any type of coating & enameling (Across all product categories-if any painted/enamelled part is used ) on the Brass Burners Assembly set or any other material burners Assembly sets are not covered under warranty.

Discoloration of the Brass Burners or any other material Burners due to oxidation process will not cover under the warranty.

Denting, Deformation of the Brass burners is also not cover in the warranty

If Hob is fitted with FFD (Flame Failure Device) in case there is issue with Gas Supply like if dust & moisture is trace in that case warranty would not be applicable. In that case company would advice to customer to bypass the Flame failure device use the product as a normal Hob/cook top without Flame failure Device.

Failure due to use of High pressure Gas Regulator/ higher pressure of gas supply due to malfunction of the Regulator on bottle Gas, High pressure Pipe Line Gas supply or use the wrong Gas ( Product is suitable to use with LPG & CNG only.(Default setting is LPG in case of CNG gas Injector need to be changed & require adjustment if require to be done on Gas valve).moisture dust/ moisture in the Gas supply is not covered in the warrantee in that case repair will be done on the chargeable basis for Spares & Service,

Breakage of Glass due to using any kitchen utensils/ cooking appliances /aids (e.g. Bati Cooker, Kaladu, Gas Tandoor, Gas Oven, Paniyarrakal Maker etc.) which cover the burners and touch the glass surface directly on the Glass of Built in Hob /Cook tops, are excluded from warranty coverage.

Improper uses/ storage, misuse or abuse, accident or neglect, such as physical damage (cracks, scratches, rust breakage of glass etc.) To the surface of the product resulting from misuse/storage is not cover under the wty.

Damage non performance due to connecting the kitchen hood duct that is used for Exhausting fumes of other appliance / gadgets.

Contact with liquid, water, rain, extreme humidity or exposure to acidic atmosphere, sand, dirt or the like, extreme heat, or food.

Use of the Products for commercial purposes or at places like institutions, hospitals, community halls, hotels, canteens, cafeteria's and other similar applications or subjecting the Product or Accessory to abnormal usage or conditions or not cover in the warranty .

Damage due to Attack of pests / rodents / birds making nests in the duct pipe or other acts are not cover under the warranty.

Accidents caused due to non maintenance of the product are not cover under this warranty Fire in cooker hood ( Chimney) due to any reason what so ever it may be & non cleaning of filters / oil cup in case its fitted, or due to negligence (Example In case, Oil, Ghee & Fat is continue heating without uses & unattended may catch the fire, fire can further engulf /spared to cabinetry, Chimney. It's not cover in the warranty. No claim in this regards what so ever it may be accepted it out rightly rejected.

Accidents resulting from improper/ incorrect installation.

Charcoal filters directly exposed to flame of cook top / hob.

Consumer using any kitchen utensils/ cooking appliances /aids which cover the burners and touch the glass surface directly of the Glass Built in Hob /Cook Tops , any damage due the same are excluded from coverage.

Fire & Damage what so ever it may be due to none removing of the protective PVC or any other type/material film, protective sheet or bag is not cover in the warranty it's excluded from the coverage.

Non performance and/or any accident due to wrong installation, none maintaining the gap between base of kitchen hood and upper most part of Cook top/ built in Hob. For the wall mounting models its 65cm-75cm & 50Cm -55CM in side wall mounted models & maximum 76 cm in case of Centre Island model.

Carcass dimensions not as per specifications of the product in case built in appliances. Carcass for Built-in Oven / Built-in Microwave Oven is not ventilated from rear side or is not installed as built In.

The company & its Authorized Service Franchisee & agent undertakes no liability in the matter of consequential loss and / or damages caused to the customer or third party/pet animal/ any type of Property moveable /im- movable what so ever it may be due to failure/malfunction/fire of the product by use of High pressure Gas Regulator/ higher pressure due to malfunction of the Regulator on bottle Gas, High pressure Pipe Gas supply or use the wrong Gas ( Product is suitable to use with LPG & CNG only ) & the moisture dust/ moisture in the Gas supply is not covered in the warranty.

Motor & other related part like Fan Electronic spares will not cover in the warranty in case customer do not regularly use the heat clean function & clean the oil cup. (Depending on the usage pattern- like family size, cooking & eating habits etc.) In the models having the heat clean function in Chimney/Cooker hood.

In case warranty period is more than a year after the period of one year, visit/repair charge would be levied as and when the customer calls. However, the spare parts would still be covered under warranty and would not attract any charges through out the warranty period of the respective product as per warranty terms.

Any routine maintenance / cleaning / servicing visit would not be covered under this warranty, and would be provided on chargeable basis as per prevailing rates / charges.

Whether defective components are to be replaced / repaired shall be left to the sole discretion of the company. In case of replacement of a part, the defective part removed from the product becomes the property of IFB Industries Ltd.

The company & its Authorized Service Franchisee & agent undertakes no liability across all product categories in the matter of consequential loss and / or damages caused to the customer or third party/pet animal/ any type of Property moveable/im-movable what is so ever it may be due to failure / malfunction of the any products. Obligation under this warranty shall be limited to repairing or replacing the defective part as per warranty terms.

In case of no authorized service centre available in the area/ or in case service is to be provided beyond municipal/city limits, then services would be provided from the nearest authorized service area, a fixed charge would be applied (subject to distance are minimum Rs.350/-) in addition to the actual to & fro charges along with local conveyance by the shortest route. However, in order to avail the services, the products could also be brought at the nearest authorized service centre by the customer at their own expenses and risk/ damage.

In case of change of city/ town from the original place of purchase at any given point of time, then the product would attract a warranty transfer cost of Rs. 350/- (The money needs to be paid to the local authorized service franchisee). This does not include the cost of re-installation charges . However, if the product is being shifted within the municipal limit of the city then warranty transfer charges will not be applicable.

This appliance is designed for domestic use by individuals at home only.

These are the only warranty terms and conditions given by the company for the respective appliances.

The decision of IFB with regards to the settlement is final. Any disputes subject to Calcutta court and or / other judicial/ or quasi judicial forums having jurisdiction over the registered office of the Company.

**Customer Copy**

**Product..... Model ..... Serial No .....**  
**CustomerName .....**  
**Address .....**  
**Area ..... City .....**  
**State.....Pin Code.....**  
**Telephone No. - Residence..... Mobile.....**  
**E-mail.....**  
**Dealer'sName .....**  
**Invoice No. & Date..... Price.....**  
**Machine Delivered on.....Machine Installed On.....**

IFB reserve the right to change the manual any time ,company decline any responsibility to printing/spelling error. Any chagres mention for any service or warranty transfer charges or any other charges are subject to change without prior notice. All taxes /levies extra – as per Central Govt/state Govt /Municipal bodies/ Cantonment board /penchant or any other body approved by Govt what so ever it may be today or in future.

## Installation Report

Product..... Model ..... Serial No .....

Customer Name .....

Address .....

Area ..... City .....

State.....Pin Code.....

Telephone No. - Residence..... Mobile.....

E-mail.....

Dealer's Name .....

Invoice No. & Date..... Price.....

Machine Delivered on.....Machine Installed On.....

### Check Points-

1.Any major transit damage to the machine observed	Yes	No
2.Power point with MCB or other Automatic Short Circuit Device	Yes	No
a. Condition of Earthing/ Plug/Power Point( 230V AC 6/16 Amp) Depending on model.	Yes	No
b.If poor/faulty or not available ,Customer has been advised to correct the same.	Yes	No
3.User manual	Yes	No
4.Warranty term explained.	Yes	No
5.Basic use demo.	Yes	No
6.Trouble shooting explained	Yes	No
7.Do's&Don't explained	Yes	No
8.Procedure to clean/filters/outer body/ Surface/burners/spark plugs/knobs	Yes	No
9.Status of Indicator LED(if applicable)	Yes	No
10.How to use Flame failure device if applicable	Yes	No
11.Status of gas supply tube /pipe/regulator.If not suitable or poor/ cracked/advise the customer to correct the same.	Yes	No

Installed By .....Signature.....

Receipt/bill no. for Installation Charges .....

### Customer Response

1.The Installation Person was courteous & helpful Yes No

2.I would describe my experience with Installation as

Unacceptable Satisfactory Non satisfactory Very satisfactory

**Note:** - Installation work is done on chargeable basis & on the customer risk  
**Scope of Work:** - Company will only install the product, fix the pipe and cut the duct cover. Installation Material like pipe, elbows, clamps & masonry work/wood work /glass cutting/granite cutting will be carried by customer at his cost & risk . I certify that the above information and check has been done to my satisfaction & I am fully satisfied with installation of the product.

Customer Name & signature

Date

TRUSTED BY OVER **7 MILLION** CUSTOMERS



**LAUNDRY** Front Load | Top Load | 100% Clothes Dryer **KITCHEN** Dishwasher | Microwave Oven | Chimney | Built-in-Hob | Built-in-Oven **LIVING** Air Conditioner

IS 302-2-31:2009



CMIL-No. 6300117797



Shop 24x7  
Download  
my IFB App

FOR REPEAT ORDERS ☎ 08045845678

[www.ifbappliances.com](http://www.ifbappliances.com)