

TRUSTED BY OVER **7 MILLION** SATISFIED CUSTOMERS



TL421PKMAN320

A

Shop 24x7 @ www.ifbappliances.com | Email customerservice@ifbglobal.com | Call 080 458 45678/080 695 45678
www.facebook.com/IFBappliances twitter.com/IFBappliances www.instagram.com/IFBappliances
www.youtube.com/channel/UCJTIHxPTfez4mrbVBIQLb9Q



wysiwyg.co.in | September 2024

TL700 AG/CB/EP/MB/MG 1SWID
 TL700 MM/MS/NB/OG/WR 2SWID
 TL800 AG/CB/EP/MB/MG 1SID
 TL800 MM/MS/NB/OG/WR 2SID
 TL801 AG/CB/EP/MB/MG 1SWID
 TL801 MM/MS/NB/OG/WR 2SWID

User Manual

IIFB
 Set Yourself Free



Read instructions before switching on the washing machine.
 Observe safety guidelines for installation.

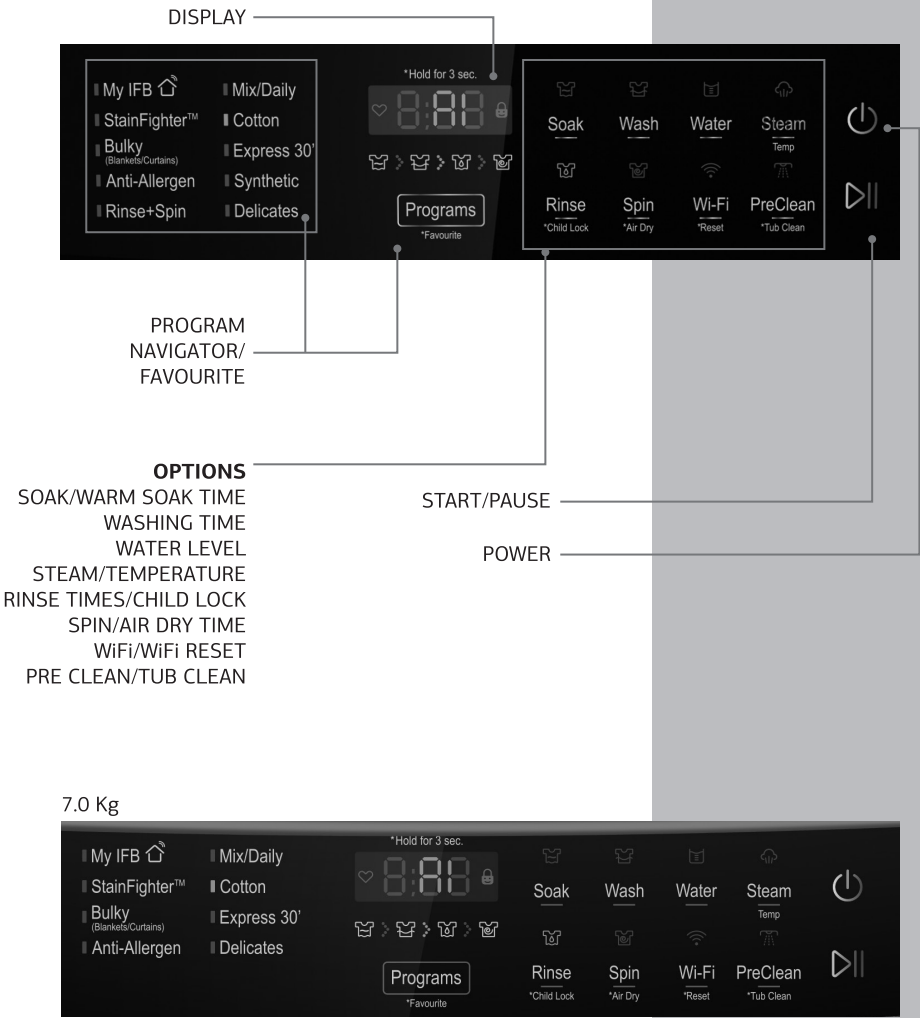
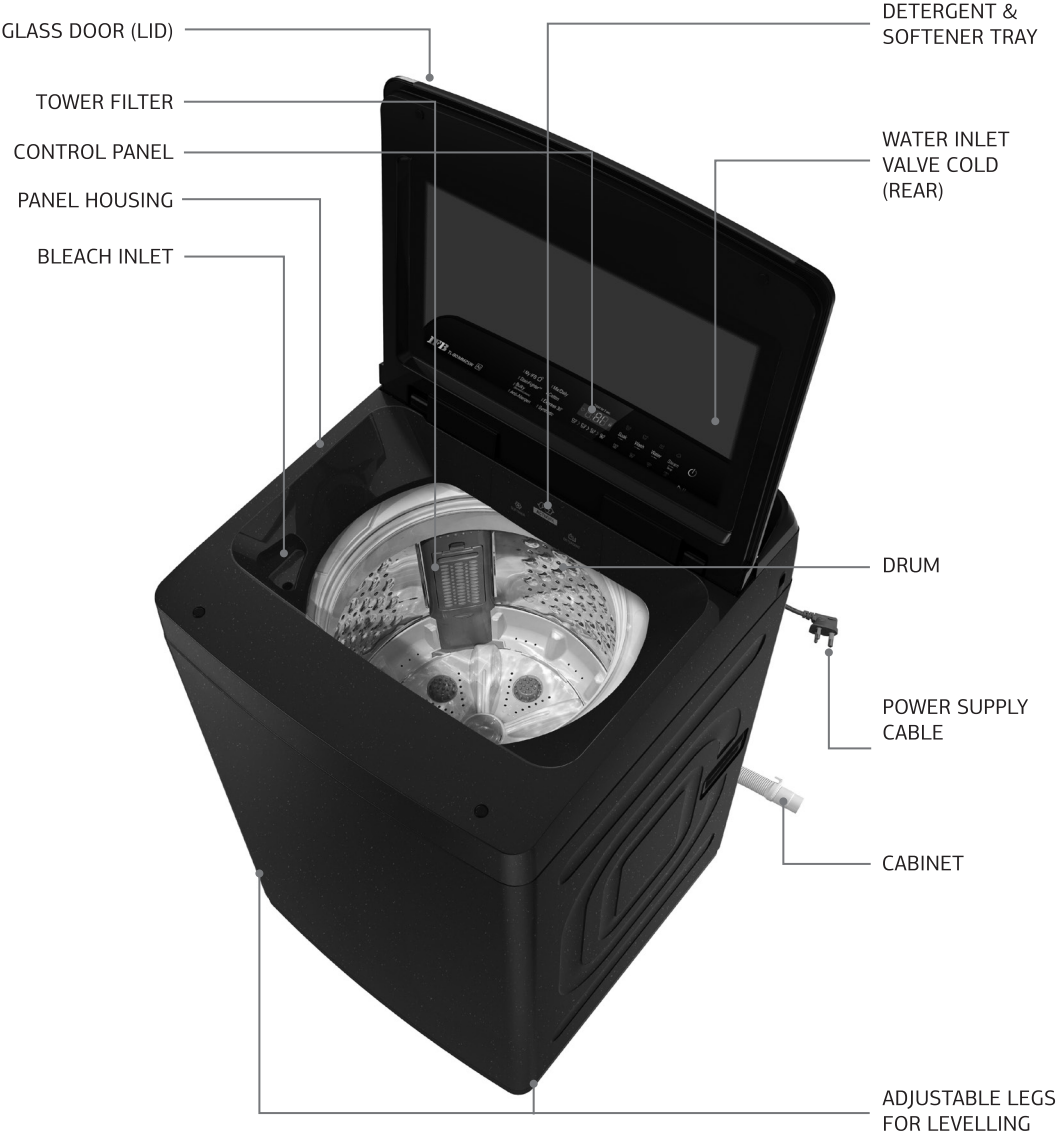
Welcome to the IIFB family

India's best fully automatic washing machine is now at your service.
We thank you, hope it serves you well and becomes an integral part
of your family!



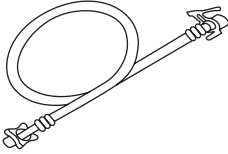
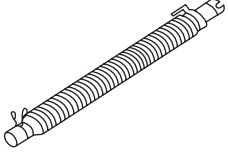
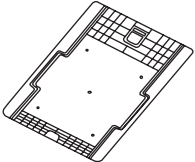
The A to Z of your washing machine

TL700/801 AG/CB/EP/MB/MG 1SWID
 TL700/801 MM/MS/NB/OG/WR 2SWID



TL800 AG/CB/EP/MB/MG 1SID
 TL800 MM/MS/NB/OG/WR 2SID



ACCESSORIES		
WATER INLET HOSE 1 PIECE	OUTER DRAIN HOSE 1 PIECE	RAT MESH 1 PIECE
		



SAFETY GUIDELINES FOR INSTALLATION

This appliance is not intended to be used in household and similar applications such as:

- Staff kitchen areas in shops, offices and other working environments.
- Farmhouses.
- In hotels, motels and other residential type environments, by clients
- Bed and breakfast type environments.
- Areas for communal use in blocks of flats or in launderettes.

If the manufacturer wants to limit the use of the appliance to less than the above, this shall be clearly stated in the instructions.

- Please operate the machine after removing all the packaging.
- Keep the packaging material. It may come in handy when shifting residence.
- Transportation tip: During transportation of the machine, the assembly holder protector and tub cushion must be included to prevent damage to your machine.
- Old hoses must not be reused. Always use new hoses delivered with the machine.
- Before cleaning the machine, ensure that you disconnect the main electricity supply and take the plug out of the socket.
- All washing machine installation work must be carried out only by authorised IFB Service Personnel.
- Pre-installation work such as plumbing and electrical connections must be carried out by a qualified fitter, electrician or technician.
- Do not operate the appliance where inflammable substances such as oil, benzene or highly inflammable gas are present. Such materials may cause fire or explosion. Never use combustible detergents.
- Do not install your washing machine in rooms where temperatures below freezing point may occur. Frozen hoses may burst under pressure. The reliability of the electronic control unit may be impaired at temperatures below freezing point and above 50°C.
- Install the machine in a room with adequate ventilation. Avoid a room with no windows. The back of the machine should be at least 4 inches (100 mm) away from the wall.
- The machine is provided with ventilating openings on the base. Hence it is always recommended to put the machine on the floor after removing any carpet, mats etc.



- Do not install the machine in a damp area or a bathroom with exposure to a direct shower.
- Protect the machine from direct sunlight and rain.
- Do not place the machine on a slanting, uneven or unstable surface.
- A concrete floor is the most suitable installation surface for a washing machine, being far less prone to vibration during the spin cycle as compared to wooden floorboards.
- The washing machine is not suitable for connection to a hot water supply.
- The machine is designed to operate with water flow pressure between 0.3 Bar–8 Bar. Lower water pressure may lead to malfunctioning of the machine.



SAFETY INSTRUCTIONS

Read all instructions and explanations for installation carefully before use. Follow the instructions carefully. Keep the operating instructions handy for later use.

- **Any damage caused by cockroaches insects, termites etc will not be covered by the appliance guarantee.**
- Do not install and use a damaged machine. Before connecting the machine, ensure that the connection data on the data plate (fusing, voltage and frequency) match the main electricity supply. If in any doubt, consult IFB Care.
- Do not wash or dry articles that have been cleaned, washed, soaked in or dabbed with combustible or explosive substances (such as oil, paint, gasoline, degreasers, dry cleaning solvents, kerosene etc). This may result in a fire or an explosion.
- Before using the machine for the first time, check that all the packaging has been removed.
- Turn OFF the stopcock if the machine is to be left for a length of time (eg holidays) especially if there is no floor drain (gully) in the immediate vicinity.
- Children should not play with the appliance.
- Cleaning and user maintenance should not be performed by children without supervision.



CAUTION

- The electrical safety of this appliance can only be guaranteed when continuity is complete between the machine and an effective earthing system, which complies with local and national regulations. It is most important that a qualified electrician regularly tests the basic safety requirement.
- The manufacturer cannot be held responsible for the consequences of an inadequate earthing system.
- For safety reasons do not operate this appliance on an extension cable. Extension leads do not guarantee the required safety of the appliance.
- There is danger of overheating in case instructions or recommendations are not followed.
- The machine is built in accordance with current safety requirements.
- Unauthorised repairs could result in unforeseen dangers for the user, for which the manufacturer cannot accept responsibility. Only authorised IFB personnel should undertake repairs.
- The machine is completely isolated from the electricity supply only when it is switched OFF at the wall socket and the plug is taken out, or it is switched OFF from the main source, or the main fuse is taken out or MCB switched OFF.
- The machine must be connected to the onsite water supply only using a new hose kit. Old hoses must not be reused. Only genuine IFB original spare parts must replace faulty components. Only when these parts are fitted can the safety standards of the machine be guaranteed.
- If the connection cable is faulty it must be replaced only by an IFB approved service technician to protect the user from danger.



About eWaste

eWaste or Electronic Waste or Waste Electrical and Electronic Equipment (WEEE) are the terms used to describe old, end-of-life or discarded appliances using electricity.

Do's

- Always dispose of products that have reached end-of-life by calling an authorised local eWaste recycler.
- Always drop off used electronic products, batteries or accessories at your nearest authorised eWaste recycler when they reach end-of-life.
- Whenever possible, or as instructed, sort packaging materials according to responsible waste disposal and recycling options.

Don'ts

- Do not dismantle electronic products on your own.
- Do not throw electronic products in bins with a 'Do Not Dispose' sign.
- Do not give eWaste to informal and unorganised sectors such as local scrap dealers and rag pickers.
- Do not dispose of your product in garbage bins along with municipal waste that ultimately reaches landfills.

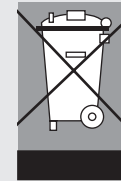
- Do not pull the cord to disconnect the plug. Hold the plug itself. Do not insert or remove the plug with damp hands.
- Do not drag or move the washing machine if it contains the wash load or when in operation.
- Do not spill water over the machine. In case of spillage, wipe dry. Avoid the machine coming in contact with floor cleaning chemicals.
- Do not wash or spray water over the switch or control panel.
- Do not wash shoes or utensils in the machine.
- Use detergent recommended for the washing machine.
- Keep your machine dry to avoid corrosion/rusting. Take special care to wipe the machine after cleaning coin trap.
- Check the labels on garments for the determining conditions under which fabrics are to be washed.
- The machine is tested with water during assembly for performance checking. Condensed droplets of water may remain inside the drum. It is advisable to run the machine without a wash load in the Cotton maximum temperature program with detergent for the first time after installation.
- Ensure that the machine is connected to a 3 pin socket with good earthing and 16 Amp MCB or other automatic short circuit protection devices.
- Textiles which have been pre-treated in solvent based cleaning agents, must be thoroughly rinsed in clean water before being washed in the machine.
- Never use solvent based cleaning agents in this machine, as this may result in damage to component parts and create toxic fumes. Such detergents also pose a threat of fire and explosion hazards.
- If excessive vibrations observed on trolley, then trolley needs to be replaced immediately as it can affect reliability of machine thereby reducing the machine life.



Risks of Improper Handling of eWaste

eWaste usually includes components which, if disposed of improperly, hold environmental consequences such as air, water and soil pollution and also pose risks to human health.

By ensuring this product is disposed of correctly, you will help prevent potential negative consequences for the environment and human health. Components and materials used in the manufacture of this washing machine are fully compliant with provisions of hazardous substances outlined in eWaste Management Rules, 2016.



For Detailed Information and Disposal Request

Contact IFB Care at 08045845678/08069545678 and provide your details to our representative to request your product to be picked up for disposal.

- Only use dyes specified by the manufacturer as being suitable for use in a domestic washing machine. Always read the manufacturer's instructions carefully.
- Colour runs and dye removers contain sulphur compounds, which can cause damage such as corrosion. Do not use these products in this machine.
- For machines with a porthole door, remember that the porthole glass will be hot when washing at very high temperatures. Do not let children touch it.
- Always make sure that the drum is stationary before removing clothes. Reaching into a moving drum is extremely dangerous.

Flooding danger

- While hooking the drain hose into a wash basin, check that the water drains OFF quickly to prevent the sink from overflowing. Make sure the drain hose is secure so that the force of the water flowing out of the hose does not dislodge it. Otherwise this will result in flooding.
- Take care to ensure that foreign objects (eg nails, pins, coins, paper clips etc) do not find their way into the machine with the washing. These may damage components of the machine (eg suds container, drum etc), which in turn can result in damage to the washing.



CONTENTS

	PAGE
Safety Guidelines	06
Safety Instructions	08
Chapter 1: Features and names of parts	
Key features	14
Chapter 2: Getting started	
Installing your machine	16
Before you start	20
Preparing laundry and detergent	21
The functions of the control panel	22
Washing procedure	26
Chapter 3: Working with your machine	
Washing procedure	28
General procedure for operation	38
Water level and amount of detergent	41
Chapter 4: Get more from your machine	
Caring for your washing machine	44
Cleaning your washing machine	46
Easy tips to remove stains	47
Chapter 5: Useful information	
Troubleshooting	50
Technical specifications	53
Service record	55
Warranty	59



Warning Electrical safety of this appliance can only be guaranteed when continuity is complete between it and an effective earthing system which complies with local and national safety regulations. It is important that this basic requirement is present and regularly tested. When there is any doubt, the onsite wiring system should be inspected by a qualified electrician. IFB cannot be held liable for the consequences of an inadequate earthing system (eg electric shocks etc).

Precautions This appliance conforms to safety requirements. Inappropriate use can lead to injury or damage to property. Please read this user manual carefully. It contains information on safety, installation, use and maintenance.

Use only less foaming detergents in this machine to avoid inconvenience or damage. It will help you to use your new washing machine optimally and avoid accidents or damage to the appliance.

KEY FEATURES

**DEEP
CLEAN**

**aqua-
énergie**

**aqua
spa**



WHAT IS DeepClean®?

A magical cleaning experience that is tough on stains and gentle on clothes. Driven by the powerful triadic Pulsator Cleaning Engine, IFB DeepClean® washing machines bring a sparkle to your clothes.

4 unique technologies drive the DeepClean® experience

1 Aqua Energie

Energises water to get the best out of detergent and takes it deep inside the fabric to dislodge dirt.

2 Aqua Spa Therapy

An indulgent water treatment surrounds your clothes. Stubborn stains are shaken, loosened and rinsed away to give you 100% rejuvenated clothes.

3 Triadic Pulsator

Soft Scrub Pads Gently scrub off stubborn dirt.

Swirl Jets Powerful water jets penetrate the fabric to dislodge dirt from every corner.

Centre Punch Gentle mechanical action squeezes the dirt out.

4 Bi-Axial Clothes Rotation

Clothes rotate horizontally and tumble vertically for a complete 360° wash. Dirt separates from the fabric and is washed away.

In-built Heater

An in-built heater with an option to select the temperature ensures the best wash by activating the detergent's enzymes to remove the toughest stains. Hot water also removes germs and allergens from the clothes.

CRESCENT MOON DRUM

Smooth crescent moon grooves on the drum surface create a gentle water cushion that prevents damage to fabrics.

INTELLIGENT WASH PROGRAMS

Let your clothes enjoy the sensory pleasure of DeepClean® with IFB's intelligent wash programs.

Time and water saving

a) Express 30' b) Mix/Daily

Fabric friendly (Available in selected models)

a) Bulky (Blankets/curtains) b) Delicates c) Synthetics d) Cotton

Hygiene (Available in selected models)

a) StainFighter™ b) Anti Allergen c) Tub Clean

Customised for convenience (Available in selected models)

a) Favourite b) My IFB (Jeans, Baby wear, Sports Wear, Saree, Uniform)

MACHINE CARE

High-Low Voltage Protection

A smart microcontroller continuously monitors the online voltage fluctuations and temporarily stops the program to protect the machine in case the voltage drops below 165 ± 10 V or rises above 270 ± 10 V. The program will resume once the voltage is within the safe operating range.

Program Memory Backup

The program resumes from where it left off in case of a power failure. No repetition of the cycles saves time, water, power and adds longevity to the machine.

Auto Imbalance System

This system automatically determines the unbalanced clothes in the machines and redistributes them by taking additional water, making the machine extremely stable during the spin cycle.

USER CONVENIENCE

Child Lock

Prevents children from tampering with machine settings.

Auto Softener Dispenser (available for selected models)

A specially designed compartment for you to add softener before you start the wash.

Bleach Dispenser

A special inlet allows you to dispense liquid bleach.

Air Dry Option

Fresh air enters through the exchange window to enable clean, hygienic drying.

Wheels

For easy mobility of the machine.

Lint Tower Filter

The lint filter effectively captures fabric fibres floating inside the tub and prevents them from catching onto other clothes.

Soft Closing

Safe and smart door closing that helps prevent sudden door closure for user safety.

Auto Tub Clean

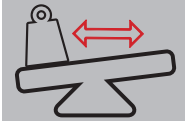
Automatically ensures tub hygiene after wash cycles.

Shower Rinse

Jet of water is injected into your clothes with a spraying mechanism for best washing and rinsing effect.

9 Swirl Wash

Swirl technology that gently cares for your clothes



Programs may vary from model to model



2

GETTING STARTED WITH YOUR MACHINE

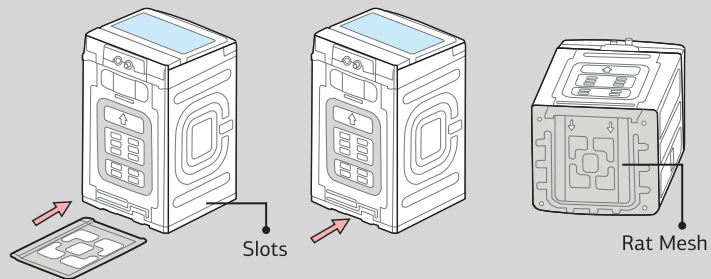
INSTALLING YOUR MACHINE

1 Select the right spot

Unpack and place the new washing machine in proximity to both water and electrical connections. Ensure that the floor is properly levelled.

2 Installation of rat mesh

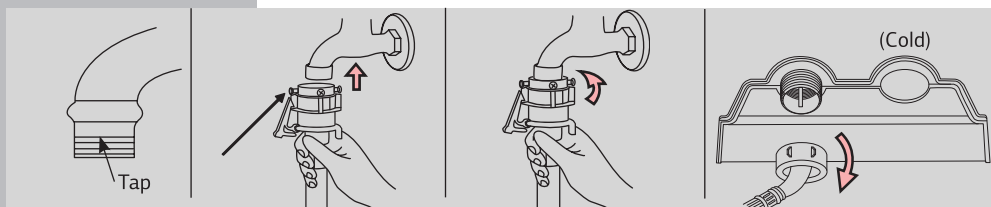
- After unpacking, remove the rat mesh from the top cushion.
- Tilt the washing machine 45° forwards. Insert the rat mesh between the slots provided at the rear of the washing machine.
- Push in the rat mesh and press it upwards till you hear a 'click'.



3 Connection to the water supply

- Fix the water inlet hose to the tap.
- Pull the skirt-like nut on one end of the water inlet hose upwards and screw it into the tap tightly.
- Hold the water inlet hose and pull it downwards to check whether it is fixed securely.

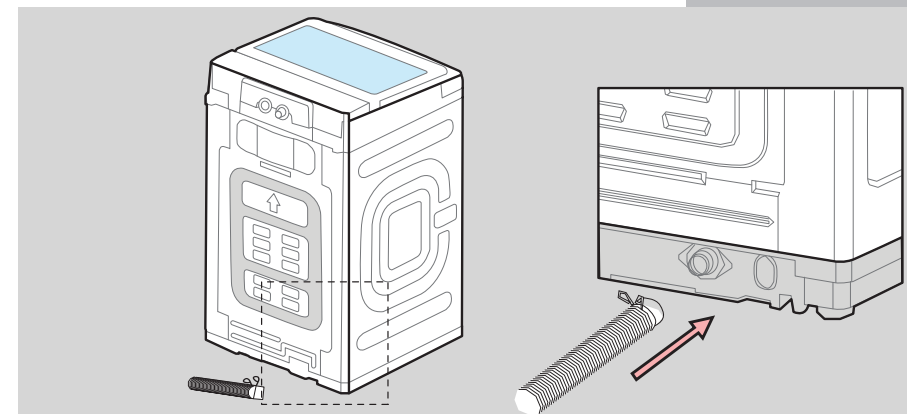
Note After connecting inlet hose to water tap, turn on the water tap to flush out foreign substances such as dirt, sand or sawdust in the pipelines.



- Fix the other end of the water inlet hose into the machine.
- This machine must only be connected to the onsite water supply using a new hose kit. Old hoses must not be reused. After installation of the water inlet hose, do not immediately start the washing machine. First open the tap to create water pressure in the hose to check for leakage from the connectors at both ends. If the pressure is too high, close the tap slightly to avoid water leakage.
- The machine is designed to operate with water flow pressure between 0.3 Bar–8 Bar. Lower or higher water pressure can lead to malfunction of your machine.

4 Connection to the drain hose

- Never forget to install the drain hose before operating your machine. If the packing is removed, you will find a drain hose.
- Connect the drain hose to the drain outlet at the rear of the washing machine.

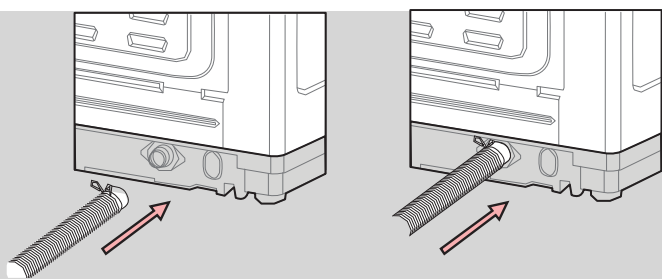


Note The opening must not be obstructed by carpeting when the washing machine is installed on a carpeted floor. Drain faults will result if the drain hose is blocked.

A protection film is provided for the safety of the cabinet during transit. It may be removed at the time of installation.

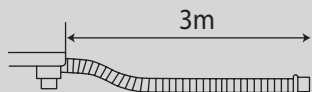
How to insert the drain hose into the drain outlet

- Insert the drain hose into the drain outlet of the machine.
- Press the hose clamp.
- While pressing, push the drain hose towards the body.
- Release the hose clamp after pushing the drain hose.

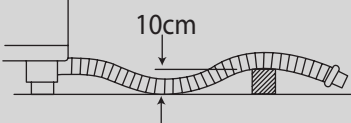


How to install the drain hose

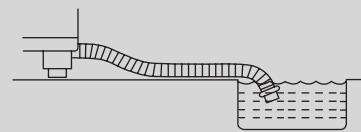
In case the drain hose is extended, don't let the total length exceed 3 m.



In case it goes over a door sill, Don't let the height of the drain hose exceed 10 cm from the bottom of the washer.

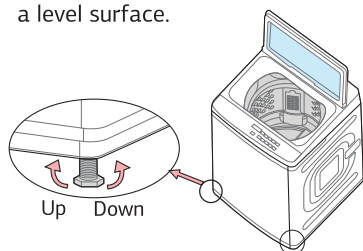


Be careful that the end of the drain hose is not immersed in water.



5 Levelling

If the washing machine is installed on an unsuitable floor, it could make considerable noise, vibration and malfunction. Level the machine by using the adjustable legs provided at the bottom for levelling. If washing machine is not levelled, adjust the front legs up or down for horizontal setting. Make sure that the machine rests on all four feet on a level surface.



6 Electrical connection

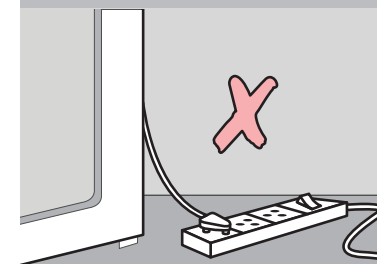
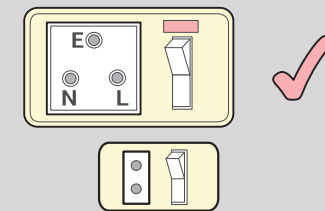
- It is mandatory to have a 16 Amp, 3 pin 220–240V AC, 50 Hz electrical point with 16 Amp MCB or automatic short circuit protection device within 1 metre of the machine.
- Make sure your home has proper earthing and there is a firm connection between the plug and the socket. IFB recommends a separate MCB on the socket of the washing machine.
- Proper earthing on the power socket is critical to reliable performance.



Warning—Electrical shock hazard

Failure to follow these instructions could result in death or serious injury.

- Electrical earthing is required for this machine. If it does not fit the outlet, have a proper outlet installed by a qualified electrician.
- Do not earth with a gas pipe.
- Do not change the power supply cable plug. If the connection cable is faulty or damaged, do not operate the washing machine. It must only be replaced by an IFB approved service technician to protect the user from danger.
- Check with a qualified electrician if you are not sure the washing machine is properly earthed.



BEFORE YOU START

Check your machine

Ensure that the washing machine has been installed and connected properly.

- **Electrical connection**

It is mandatory to have a 16 Amp, 3 pin 220–240V AC, 50 Hz electrical point with a 16 Amp MCB or automatic short circuit protection device.

- **Water connection**

The water supply point with an external or parallel 3/4" thread should be available within 1 metre of the machine location. Turn ON the water tap after the connection is secure.

- **Drain hose connection**

In case it goes over a door sill, do not let the height of the drain hose exceed 10 cm from the bottom of washer.

Your machine was tested before leaving the factory. To remove any water left over from testing procedures, the first wash cycle should be carried out without laundry in the washing machine.

- Turn ON the water tap.
- Pull the detergent tray out till the end.
- Pour approximately 20 gm of detergent into the detergent tray.
- Close the detergent tray.
- Press and hold Delay button to set the Tub Clean program.
- Press the Start/Pause button.
- After the program finishes, power will turn OFF automatically.

PREPARING LAUNDRY AND DETERGENT

1 Sort the laundry

- Remove everything from pockets.
- Close zippers, hooks and strings.
- Pre-treat collars, cuffs and stains.
- Sort the laundry.
- Check for wash care symbols/labels.


2 Load the laundry

- Check and remove any small articles or any laundry items left inside the drum or on rubber gasket.
- Place garments loosely inside the drum.
- Load garments one by one.
- Close the door.

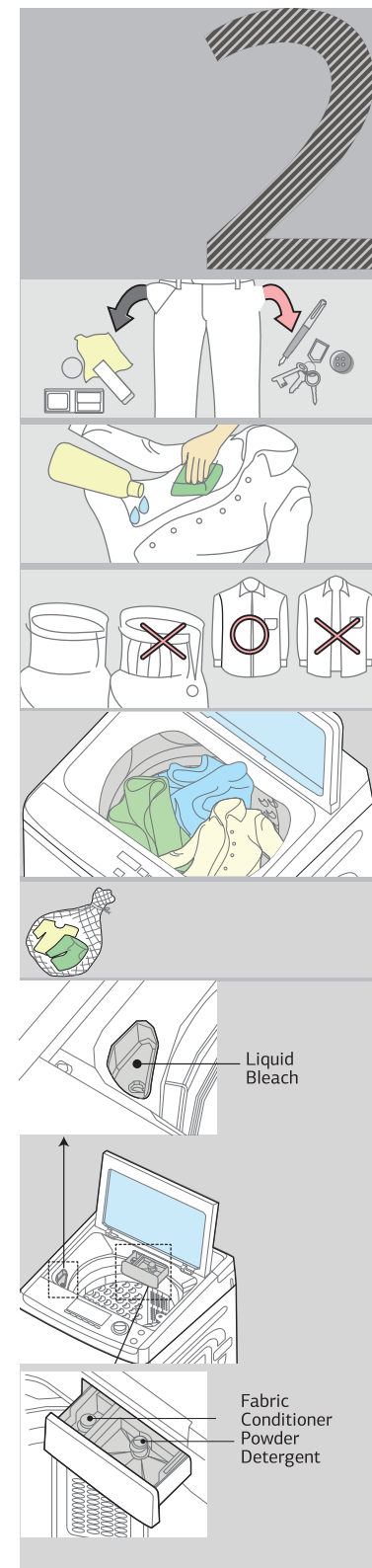
Note After loading clothes press them from above to make sure the laundry is inserted completely. The laundry or machine can get damaged if any laundry part remains exposed outside the tub. Do not overload the tub.

*** Note** Silk, wool, lacy clothes, lingerie, nylon stocking and delicate clothes may be at risk of damage and cause problems to the machine. Use a laundry net bag.

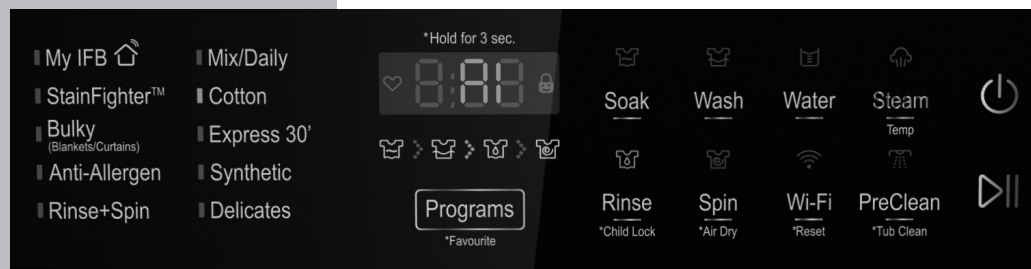
3 Add detergent

- Pull the detergent tray out till the end.
- Dispense the correct amount of detergent.
- Close the detergent tray.
-  Use the softener dispenser chamber to dispense fabric conditioners/additives. Take care not to exceed the maximum level.
- If desired, add measured liquid bleach to the bleach inlet. Use only liquid bleach in the bleach inlet. Follow manufacturer's directions for safe use.

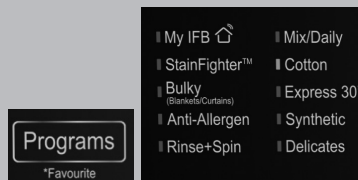
***Note** Always use detergents recommended for washing machines only. Follow the detergent package directions as using too little or excessive detergent is a common cause of laundry problems. Soap flakes or granulated soap powders should not be used in your washing machine. When washing woollens or silk, remember to use the detergent type recommended by the manufacturer.



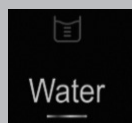
THE FUNCTIONS OF THE CONTROL PANEL



- Press the Power button to turn the power ON or OFF.

**Program Selection**

- Use the Program button to navigate and select the desired Program.
- The corresponding LED of the selected Program will glow indicating Program has been selected.
- You can select more wash options or press the Start/Pause button to start the Program.
- Use this button to set any program with options selected as a Favourite Program. (Refer to Favourite option selection for more details)

**Water Level Selection**

- Use Water button to adjust or set the Water Level as per the laundry to be washed.
- With each press, the default Water Level can be changed as follows-L:1, L:2, L:3, L:4, L:5, L:6, L:7, L:8 L:9, L:10---L:1, L:2, L:3 Repeat.
- The Water Level LED will glow.
- You can select more wash options or press the Start/Pause button to start the program.

Soak Selection

- This option soaks clothes in hot soapy water for a calculated amount of time to dislodge the dirt by improving detergent action on the clothes during main wash.
- Use this button to select/deselect the Soak option before the start of the program or in the pause state if applicable.
- First press will show default or previous selection and next press will change the Soak selection as follows: c10→h10→c20→h20→c30→h30→0→. . . & Repeat. User can select the desired Soak time.
- The Soak LED will glow to indicate the selection of Soak option.
- You can select more wash options or press Start/Pause button to start the program.

Note C10-Cold Soak and h10-Warm Soak.

Wash Time Selection

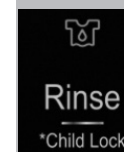
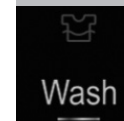
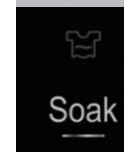
- Use Wash button to select/change the Wash Time before the start of the program or in the pause state if applicable.
- With each press, the default set Wash Time can be selected as follows-10→15→20→0→5→. . . & Repeat.
- The Wash LED will glow to indicate the selection of Wash mode.
- You can select more wash options or press the Start/Pause button to start the program.

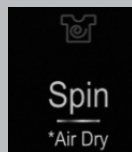
Rinse Selection

- Use this button to select/change the number of Rinses before the start of the program or in the pause state if applicable.
- First press will display the pre selected number of Rinses and next press will change the number of Rinses as follows—1 Rinse→2 Rinse→3 Rinse→4 Rinse→5 Rinse→0→1 Rinse→. . . & Repeat. User can then select number of rinses as desired.
- The Rinse LED will glow to indicate the selection of Rinse mode.
- You can select more wash options or press the Start/Pause button to start the program.

Child Lock Selection

- Child Lock is used to prevent any mishap occurring from the handling of the washing machine by a child.
- While the washing machine is in operation, press and hold the Rinse button for 3 secs to select or deselect the Child Lock function.
- The Child Lock LED will glow on the panel when the Child Lock option has been activated.
- While the Child Lock option is selected, no button will function except the Power button.





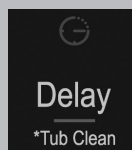
Spin Time Selection

Use this button to select/change the Spin Time before the start of the program or in the pause state if applicable.

- First press will display the pre selected Spin Time and next press will change the Spin Time as follows-1→2→3→4→5→6→7→8→9→0→. . . & Repeat. User can select the desired Spin Time.
- The Spin LED will glow to indicate the selection of Spin option.
- You can select more wash options or press the Start/Pause button to start the program.

Air Dry Selection

- Press and hold the Spin button for 3 secs to select the Air Dry option.
- With each press Air Drying time can be selected as follows; 60 mins→ 90 mins→ 120 mins→ 0→ 60 mins & Repeat.



Delay Selection (Model Dependent)

- Use this button to select/change the Delay time before the start of the program.
- This option can be used when you want to set the Wash program to start later. The start of the program can be delayed from 1Hr to 24 Hrs.
- First press will display the Delay time as following; 1→ 2→ 3→ . . .→11→ 12→ 13→. . .→22 →23 →24 →0 →1 →2 →3→. . . & Repeat. User can select the desired Delay time.
- The Delay LED will glow to indicate the selection of Delay time option.
- You can select more Wash options or press Start/Pause button to start the program.

Note Use this button to select/deselect the Tub Clean program. (Refer to the Tub Clean function for more details)



PreClean Selection

- Use this button to select/deselect the PreClean option before the start of the program.
- This option lets you pre treat the stains on the laundry.
- When the PreClean button is pressed the water flow will remain ON for a maximum of 2 mins only, which in turn can be turned OFF by pressing PreClean button once again.

Note This option can be used before/after selecting any program. This option is not applicable once you press the Start/Pause button.

Note Use this button to select/deselect the Tub Clean program. (Refer to the Tub Clean function for more details) (Model Dependent).

WiFi/Reset

- Use this button to Set and Reset the WiFi Connection.



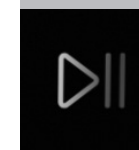
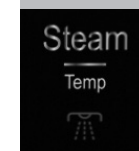
Steam/Temperature Selection

- Use this button to select/deselect the Steam and Temperature before the start of the program or in the pause state if applicable.
- First press will select Steam (S60), 2nd press will select Warm (t40), 3rd press will select Hot (t60), 4th press will select Cold wash (--), Repeat. User can select the desired Temperature.
- The Steam/Temperature LED will glow to indicate the selection of Steam/Temperature option.
- You can select more Wash options or press Start/Pause button to start the program.

Note Steam/Temperature option LED will remain OFF when cold temperature is selected.

Start/Pause

- The Start/Pause button is used to start or temporarily stop the wash cycle. Select the program you want to change. Press the Start/Pause button again to start the wash cycle.



WASHING PROCEDURE

Fully automatic programs

Usage and default selection

Program	Water Level	Wash Temperature	Wash Time (min)	Soak	Air Dry	Steam	Rinse Cycles	Spin Cycles
Mix/Daily	10	Cold	15	–	–	–	2	4
Cotton	10	Cold	5	10	–	–	2	5
Express 30'	5	Cold	5	–	–	–	1	1
Synthetic	10	Cold	5	–	–	–	1	1
Delicates	7	Cold	5	–	–	–	1	1
StainFighter™	4	40	20	–	–	–	2	6
Bulky	10	Cold	15	–	–	–	3	7
Baby Wear	8	Cold	15	–	–	–	2	5
Anti Allergen	8	60	10	–	–	–	3	5
Rinse+Spin	10	–	–	–	–	–	1	5
Tub Clean	10	Cold	20	30	–	–	2	–
Programs Via My IFB App								
Jeans	10	Cold	10	–	–	–	2	8
Sports Wear	10	Cold	10	–	–	–	2	5
Saree	5	Cold	5	–	–	–	1	1
Uniform	10	Cold	10	–	–	–	1	6

Note Depending on inlet water pressure, water hardness, quantity and type of textile, detergent used, unbalance detection, ambient condition, selected additional functions and input power supply fluctuations, the actual values given in the User Manual or with the machine can deviate from the declared standard values as they are tested according to laboratory conditions. The design and specifications (including colours/shades/aesthetics/features etc) are subject to change without prior notice due to continuous improvement and product development.

* Program setting for BEE test in conformity with IEC 60456.

To select BEE Energy saving program

- Press Power button to turn ON the washing machine.
- Press Program button to select Cotton program with Water Level 10, Wash 15 mins, Rinse 1, Spin 5mins, Soak 0

Wash guide map

Program	Available Options										
	Water Level	Wash Temperature (°C)	Wash Time (min)	Soak	Air Dry	Steam	Rinse Cycles	Spin Cycles	Delay	Auto Tub Clean	Laundry Weight (Kg)
Mix/Daily	1~10	Cold/40/60	0~20	0~30	✓	✓	0~5	0~9	✓	✗	Rated Capacity
Cotton	1~10	Cold/40/60	0~20	0~30	✓	✓	0~5	0~9	✓	✓	Rated Capacity
Express 30'	1~10	Cold	0~20	0~30	✓	✗	0~5	0~9	✓	✗	2.0
Synthetic	6~10	Cold	0~20	0~30	✗	✗	0~5	0~3	✓	✗	4.0
Delicates	6~10	Cold	0~20	✗	✗	✗	0~5	0~3	✓	✗	2.0
StainFighter™	1~10	Cold/40/60	0~20	0~30	✓	✗	0~5	0~9	✓	✓	2.0
Bulky	6~10	Cold	0~20	0~30	✓	✓	0~5	0~9	✓	✗	4.0
Baby Wear	1~10	Cold/40/60	0~20	0~30	✗	✓	0~5	0~9	✓	✗	4.0
Anti Allergen	1~10	Cold/40/60	0~20	0~30	✓	✓	0~5	0~9	✓	✓	4.0
Rinse+Spin	1~10	Cold	✗	✗	✓	✗	0~5	0~9	✓	✗	Rated Capacity
Tub Clean	10	Cold	0~20	0~30	✗	✗	✗	6	✗	✗	✗
Programs Via My IFB App											
Jeans	1~10	Cold/40/60	0~20	0~30	✓	✓	0~5	0~9	✓	✗	4.0
Sports Wear	1~10	Cold/40/60	0~20	0~30	✓	✓	0~5	0~9	✓	✓	4.0
Saree	6~10	Cold	0~20	✗	✗	✗	0~5	0~3	✓	✗	4.0
Uniform	1~10	Cold/40/60	0~20	0~30	✓	✓	0~5	0~9	✓	✗	4.0

Note Number of program varies from model to model; some of the programs may not be available in a few models.

7.0/8.0 Kg–15 program (with WiFi Models)
8.0 Kg–10 progrms (without WiFi models)

✓ Option available and can be selected

✗ Option not available and cannot be selected

WORKING WITH YOUR MACHINE

- My IFB
- Mix/Daily
- StainFighter™
- Cotton
- Bulky
(Blankets/Curtains)
- Express 30'
- Anti-Allergen
- Synthetic
- Rinse+Spin
- Delicates

Washing procedure for fully automatic programs

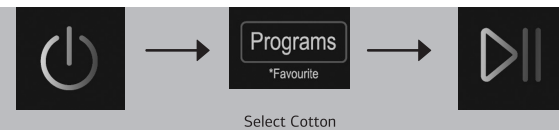
1 MIX/DAILY

- Use this program for everyday clothes that need better cleaning. This program is designed with special rhythms to remove stubborn dirt from fabrics.



2 COTTON

- Use this program to wash cotton colour fast garments such as shirts, pants, uniforms, bedding, tablecloths, towels etc.



3 EXPRESS 30'

- You can use this program to wash a small load (2 Kg max) of lightly soiled garments in a short time.



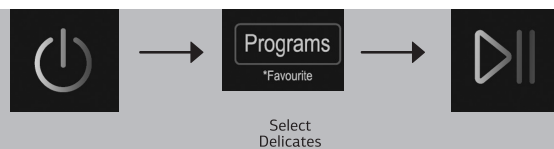
4 SYNTHETIC

- Use this program to wash Daily wear garments made of polyester, acrylic or polyamide, gym wear, sportswear etc.



5 DELICATES

- Wash woollens/delicate garments (2 Kg max) that are recommended for hand wash. The clothes are washed with a very gentle movement without damaging or stretching the fibres.
- It is recommended to put delicate clothes such as silk, woollens, lingerie in a laundry net bag.



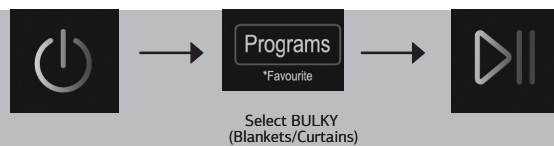
6 STAINFIGHTER™

- This program will wash using high water temperature to clear day-to-day stains.



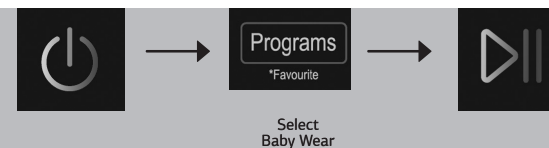
7 BULKY (Blankets/Curtains)

- For large bedspreads and blankets with stronger washing movement to thoroughly cleanse dust mites etc. Only 6~10 water level can be selected.



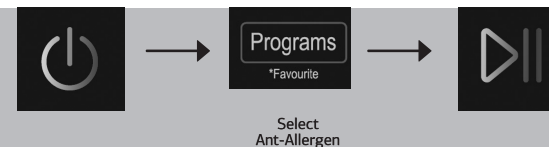
8 BABY WEAR

- Use this program to wash baby wear garments such as bibs and rompers. This program will wash using extra rinses to ensure a thorough wash.



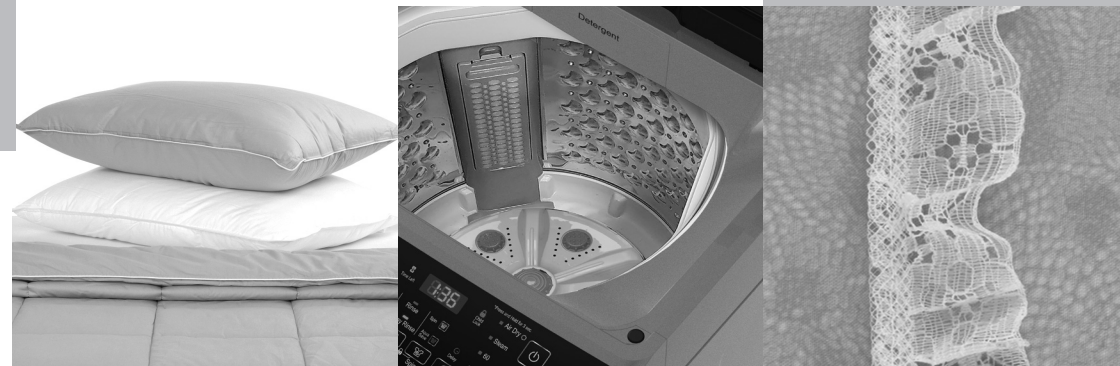
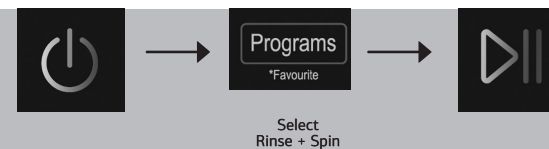
9 Anti Allergen

- The built-in rinses in this program remove all detergent residue from clothes. Useful for people with sensitive skin.



10 Rinse + Spin

- Use this program to only Rinse and Spin.

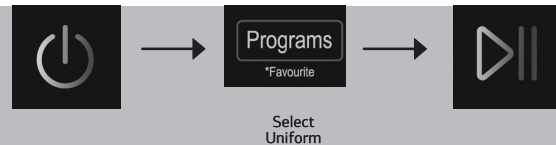


11 SAREE

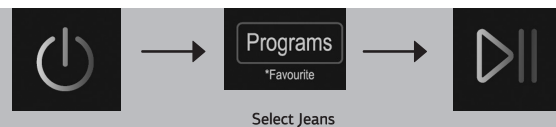
- A special program to wash machine washable sarees.

**12 UNIFORM**

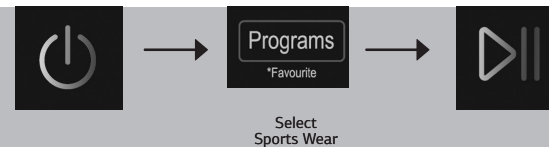
- A special program to wash shirts, pants, as well as uniforms.

**13 Jeans**

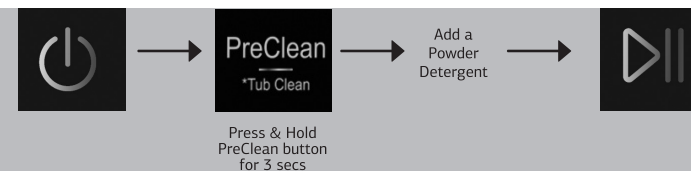
- A special program to wash jeans or other coloured garments that do not bleed colours.

**14 Sports Wear**

- A special program to wash singlets, leggings, jogging clothes and running wear.

**TUB CLEAN**

- A special cycle to wash away any impurities, scaling, bacteria or unpleasant odours from the tub.
- Water Level, Water Temperature, Rinse Time, Spin Time, Steam, and Air Dry time are not selectable.
- When using this program, do not place laundry in the drum.
- Adding a small amount of powder detergent will additionally improve the effect of the Tub Clean program.
- Use this program at least once in a month.

**Tub Clean Reminder**

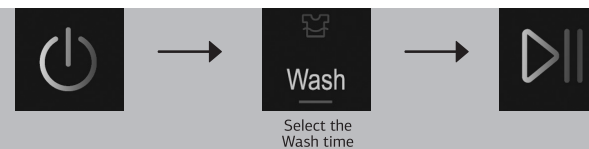
The Tub Clean Reminder will appear after every 40 washes. The display will show Run → tub → cln for 2 mins after the end of the wash program. You can select the Tub Clean program or start another program. The reminder will be displayed for the next 5 programs if the Tub Clean program is not selected. It is recommended to run the Tub Clean program after every 40 cycles to keep your washing machine clean.

Note Tub clean reminder will be displayed for 5 wash cycles and go OFF.

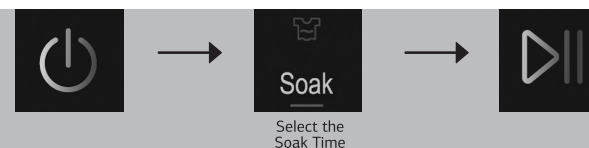


Partial process and combination

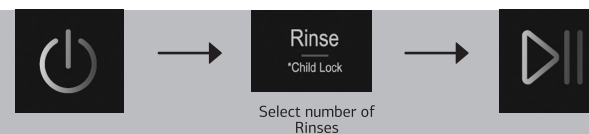
PROCEDURE OF PROCESSING



- You can select the Wash Time as follows
10→15→20→0→5→. . & Repeat.
- If you do not want the Wash process, you must adjust Wash Time to '0'.



- You can select the Soak time as follows
c10→ h10→c20→h20→c30→h30→0→. . & Repeat
- If you do not want the Soak process, you must adjust wash time to '0'.



- You can select the number of rinses as follows
Keep pressing the Rinse button to arrive at the number of rinses desired as shown on the display. Maximum number of rinses is 5. If you do not want the Rinse process, you must adjust the Rinse Time to '0'.

3

PARTIAL PROCESS

Washing Time Control

Soak Time Control

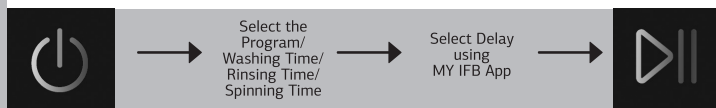
Rinse Number Control

Spin Time Control



- You can select the Spin Time as follows:
0/1/2/3/4/5/6/7/8/9 minutes.
- If you do not want the Spin process, you must adjust the Spin Time to '0' ---
- Air Dry To select Air Dry option, Press and hold Spin button for 3 secs. Selection sequence would be: 60 mins→ 90 mins→ 120 mins→ 0→ 60 mins & Repeat.

Delay Wash Control

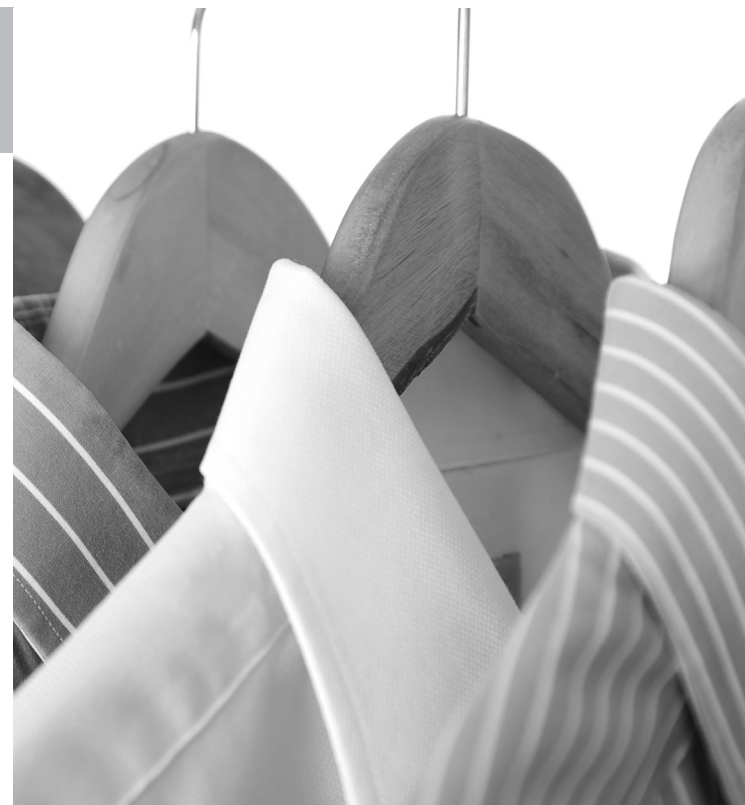


- Before starting a program, you can specify the time after which the program starts.
- Delay Wash can be chosen from minimum of 1Hour to a maximum of 24 hours.
- To set the Delay Wash, Power on the machine, select the desired program and options and then set the Delay Wash time via *MY IFB App*.
- Press Start/Pause button to start the program.
- To cancel the Delay Wash, press the Power ON/OFF button.

Only Spin



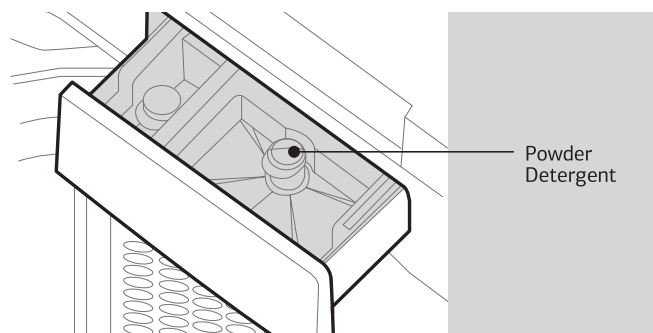
Only Drain



General procedure for operation

Loading the laundry

- Sort the laundry.
- Place garments one by one into the drum.
- For smaller loads reduce wash time setting.

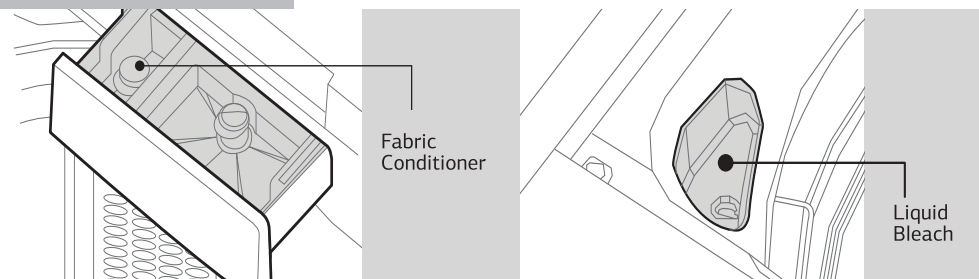


Add detergent

- Add measured detergent to the detergent tray.
- Follow manufacturer's directions.

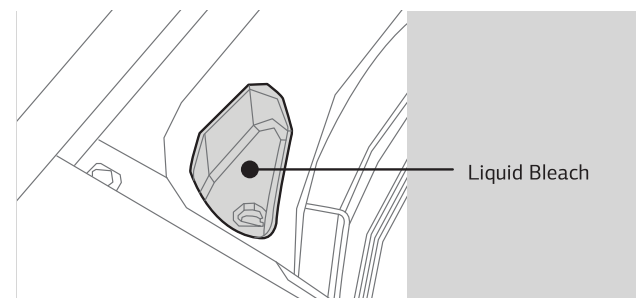
Add fabric conditioner/softener (optional step)

- If desired, add measured liquid fabric conditioner to the softener compartment located near the detergent tray compartment.
- Use the amount recommended on the package.



Add liquid bleach (optional step)

- If desired, add measured liquid bleach to the bleach inlet.
- Use only liquid bleach in the bleach inlet.
- Follow manufacturer's directions.



Operating the washing machine

- Close the washer door (lid).
- Press the 'Power' button.
- Select the fully automatic cycle.
- If desired, select the wash options.
- If desired, select the additional options.
- Press the 'Start/Pause' button.

Finishing after washing

- Washing machine will be turned OFF automatically.
- Close the water tap.
- Remove the power supply cable from the wall socket.

Washing symbols—a guide

	Resistant material
	Delicate fabric
	Washable at 95°C
	Washable at 60°C
	Washable at 40°C
	Washable at 30°C
	Hand wash
	Dry clean only
	Wool seal
	Bleachable in cold water
	Do not bleach
	Do not dry clean
	Dry flat
	Hang to dry
	Dry on clothes hanger
	Tumble dry, normal heat
	Tumble dry, reduced heat
	Do not tumble dry

Water level and amount of detergent

Detergent dosage

- Use the proper amount of detergent in conformity with the instructions of the detergent manufacturer.

Normal dosage

- Regular synthetic detergent: 30 gms per 30 litres of water.
- Concentrated detergent: 20 gms per 30 litres of water.

Laundry volume and detergent dosage reference

- Below is the reference dosage for common synthetic detergent.
- It is recommended to use low or mild foam powder.
- The detergent dosage is different for different kinds of wash programs.
- When the washing machine does not run properly, adjust clothes' volume or water level.
- The water volume listed below is based on normal clothes' volume.

7.0 Kg/8.0 Kg			
Water Level	Water Volume in L (approx)	Weight of Laundry in Kg (approx)	Amount of Detergent in g (approx)
10	60	>5 Kg	60
9	54	5 Kg	54
8	44	~4 Kg	44
7	42	~3.5 Kg	42
6	40	~3 Kg	40
5	38	~2.5 Kg	38
4	36	~2 Kg	36
3	33	~1.5 Kg	33
2	30	~1 Kg	30
1	26	~0.5 Kg	26

Let's make washing easier.
Here is a list of clothes
and their approximate
weights to help you figure out
a perfect wash load.



Cloth Weight

Sheets

Cotton (double)	1 Kg
Cotton (single)	500 g
Non cotton (double)	650 g
Non cotton (single)	400 g

Pillow slips

Cotton pillow slips	110 g
Other pillow slips	85 g

Tablecloths

Small	230 g
Large	600 g
Table napkins (4)	150 g

Bedspread

3 Kg

Blankets

Wool	2 Kg
Acrylic	1.5 Kg

Laundry Items	7 Kg	8 Kg
Bath Towels	2	2
Shirts	4	4
Blouses	3	3
Skirts	4	5
Pair of Pants	1	1
Pairs of Jeans	2	3
T-shirts	3	4
Sets of Pyjamas	4	4
Tea Towels	2	4

Bottoms

Lungi/Dhoti	200 g
Skirts	200 g
Trousers	250 g
Jeans	400 g

Tops

Cotton shirts	280 g
Other shirts	200 g
Cotton blouses	140 g
Other blouses	100 g
Woollen sweaters	400 g
Heavy sweaters	300 g
Light sweaters	150 g

Other clothes

Cotton sarees	650 g
Synthetic sarees	350 g
Bath towels	600 g
Hand towels	250 g
Pyjama kurtas	400 g
Panties	60 g
Cotton vests	100 g
Underslips	100 g
Long socks, 2 pairs	150 g
Short socks, 2 pairs	85 g
6 handkerchiefs	85 g
12 napkins	1.1 Kg

The chart indicates average weights of clothes. The recommended weight of your wash load should not be exceeded to ensure that your machine gives your clothes an effective wash. Suggested weights are approximate and may vary.



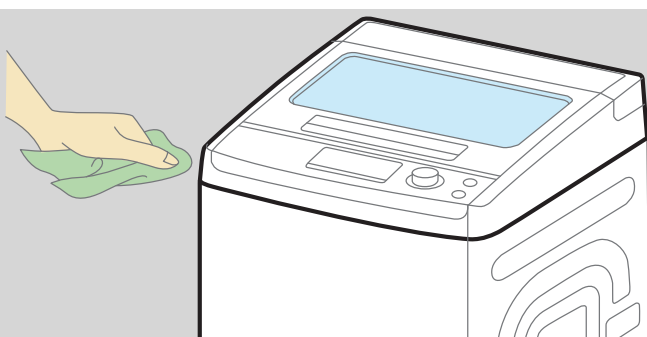
GET MORE FROM YOUR MACHINE

CARING FOR YOUR WASHING MACHINE

Proper care of your machine can extend its life. This section explains how to care for your washing machine properly and safely.

1 Cleaning your washing machine**Exterior**

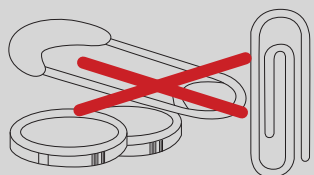
Wipe detergent, bleach, and other spills with a soft, damp cloth or sponge as they occur. Occasionally wipe the outside of the washing machine to keep it looking like new.

**Interior**

Run washing machine through a complete cycle with Tub Clean program and descalant. Follow the instructions of the descalant manufacturer and make sure that there is no laundry in the washing machine while using it. Only use proprietary non-corrosive descaling agents.

Caution

Do not put sharp or metal objects in your washing machine, or they can damage the clothes or machine. Check all pockets for pins, clips, coins, bolts, nuts, etc. Do not put these objects in your washing machine after emptying the pockets.

**2 Winter storage or moving care**

Install and store your washing machine where it will not freeze because some water may remain in the hoses. Freezing can damage your washing machine.

If storing or moving your washing machine during freezing weather, make sure to take the following precautions—

- Turn off the water faucet.
- Disconnect and drain the water inlet hoses.
- Run the washing machine on a drain and spin setting for 1 minute.
- Unplug the power supply cable.

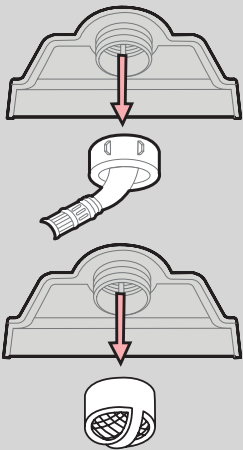
To use the washing machine again

- Flush the water pipes and hoses.
- Reconnect the water inlet hoses.
- Turn on the water faucet.
- Reconnect the power supply cable.

3 Non-use or vacation care

Operate your washing machine only when you are at home. If you will be on vacation or not use your washing machine for an extended period of time, you should:

- Unplug the power supply cable or electrical power to the washing machine.
- Turn off the water supply to the washing machine.
- This helps to avoid accidental flooding (due to water pressure surges) while you are away.



CLEANING OF YOUR WASHING MACHINE

1 Cleaning the Water Inlet Filter

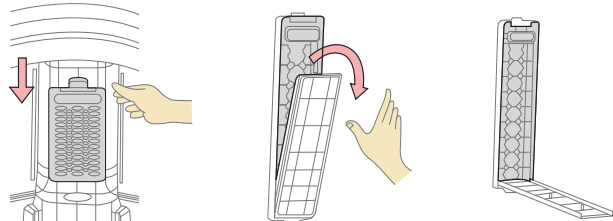
To clean the filter in the inlet valve

- Close the water faucet before turning OFF the power. Select water temperature to warm and then press the Start/Pause' button to remove water from the washing machine completely.
- Turn OFF the power before pulling out the power supply cable.
- Separate the Inlet Hose from the Inlet Valve.
- Pull the Inlet Filter out of the Inlet Valve.
- Remove the dirt from the Inlet Filter with a brush.
- Pull in the Inlet Filter and connect the Inlet Hose to the inlet valve tightly again.

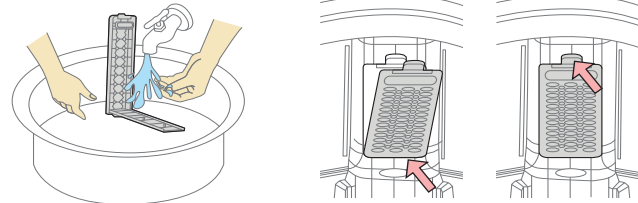
Note Presence of excess dirt/sediments/sand in water can affect the wash quality as well as the reliability of water inlet valve

2 Cleaning the Tower Filter (Lint Filter)

- Clean the Tower Filter often to keep the washer clean.
- Push the upper part of the Tower Filter and pull out.
- Open the Tower Filter inner and remove the dirt.



- Clean the Tower Filter with water.
- Close the Tower Filter inner and insert the lower part of the Tower Filter in the drum first and then push the Tower Filter till you hear a 'click'.

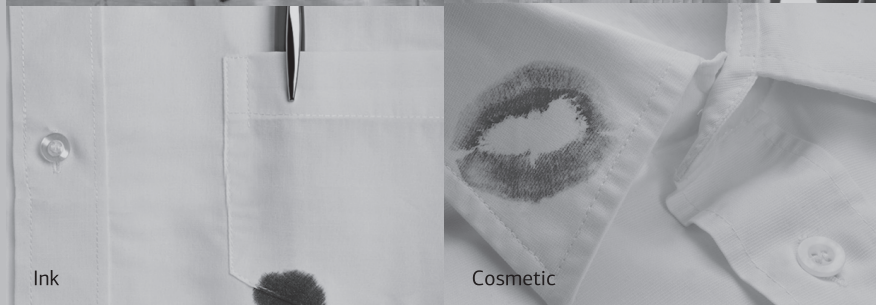


EASY TIPS TO REMOVE STAINS

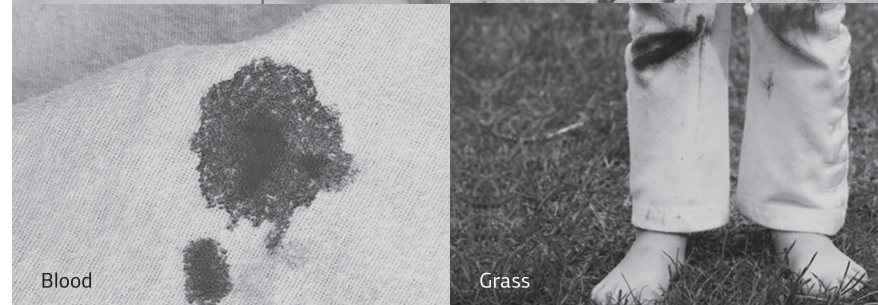
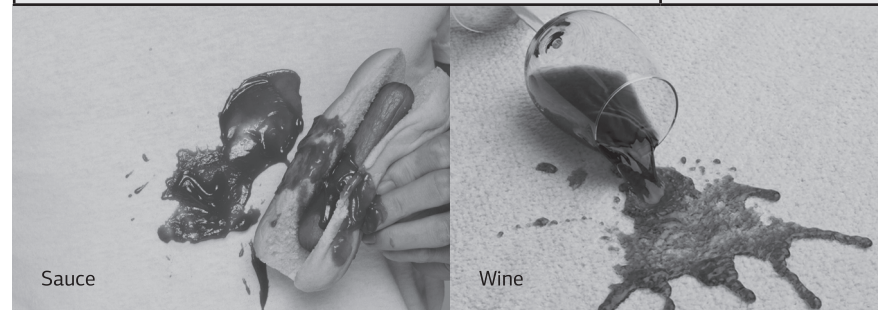
- Ensure you use warm water for soaking or Pre washing stained laundry.
- Fresh stains are easier to remove.
- Knowing what kind of stain it is, how old it is, what kind of fabric it is and whether the fabric is colour-fast (check the care label) always helps treat a stain better.
- Always start with cold or warm water as hot water can set in stains. Washing and drying can some times set in stains.
- When bleach is recommended, always use a fabric safe one.
- Put the stained area face down on a paper towel or white cloth. Apply the stain remover to the back of stain. This forces the stain off the fabric instead of through it.

TREATMENT	STAIN
Use ice in plastic bag to harden the gum. Scrape off what you can and then sponge with white spirits.	Adhesive Tape, Cement, Chewing Gum, Rubber
Rinse immediately in COLD water. If stain remains, soak in cold water with an enzyme pre wash.	Blood
Scrape off surface wax. Place stain face down between paper towels. Press with warm iron until wax is absorbed. Replace paper towels frequently. Treat remaining stain with pre wash stain remover or non-flammable dry cleaning fluid. Hand wash to remove solvent and wash using a bleach that is safe for fabric.	Candle Wax, Crayon
Sponge with COLD water and soak in enzyme pre wash. If stain persists, rub in a little detergent and rinse in cold water.	Chocolate, Cocoa
Blot up quickly and rinse out in COLD water. Rub in a little detergent and wash in the maximum temperature allowed for the fabric type.	Coffee
Pre-treat with pre wash stain remover or rub with bar soap.	Collars, Cuffs, Cosmetics

STAIN	TREATMENT
Cream, Ice cream, Milk	Rinse in COLD water and wash normally. If stain is still apparent, sponge with white spirits.
Deodorant	Rub affected area with white vinegar and then rinse out in COLD water. Sponge with white spirits. Treat stiffened areas with enzyme Pre wash.
Egg	Soak in a COLD enzyme pre wash, rinse, wash normally.
Fabric Softener	Rub affected areas with bar soap and wash normally.
Fruit	Treat as soon as possible by sponging with COLD water. Rub a little detergent on the stain and wash normally.
Grass	Sponge with white spirits. Rub in an enzyme pre wash and wash normally.
Grease, Oil	Lay the affected area face down on an absorbent cloth and work from the back. Sponge with white spirits or dry cleaning fluid. Wash normally.
Ink	Some inks may be impossible to remove and washing may even set it in. Use pre wash stain remover, denatured alcohol or non-flammable dry cleaning fluid.
Iron, Rust	Apply lemon juice and salt and place in the sun. Wash normally.



TREATMENT	STAIN
Wash in WARM water and detergent. Moisten area with lemon juice, dry in the sun and wash normally. If stain persists and fabric allows, use a bleach.	Mildew
Brush off dry mud and rinse in COLD water. If stain persists rub in a little detergent and wash normally.	Mud
May be impossible to remove in some cases. Place stain face down on paper towels. Apply nail polish remover to the back of stain. Repeat, placing paper towels frequently. Do not use acetate fabrics.	Nail polish
Scrape off any fresh paint and sponge with a non-flammable dry cleaning fluid and wash normally.	Paint—oil base
Treat while still wet, rinse in WARM water, wash normally.	Paint—water base
Dampen a cloth with hydrogen peroxide, lay it over the affected area and press with a fairly hot iron.	Scorch marks
Liquid: Pre-treat with a paste of granular detergent and water. Paste: Scrape residue from fabric. Pre-treat with pre wash stain remover or non-flammable dry cleaning fluid. Apply detergent into dampened area and wash using bleach safe for fabric.	Shoe polish



USEFUL INFORMATION

TROUBLESHOOTING

When the washing machine does not function properly, check the following points before you contact your service provider.

SYMPTOM	DISPLAY MESSAGE	CHECK POINT
The washer will not operate at all		<ul style="list-style-type: none"> Is there a power failure? Is the power supply cable correctly connected to an electrical outlet? Is the electric fuse broken? Did you turn ON the power? Did you press the 'Start/Pause' button?
No water/low water pressure If water supply is not finished within 10 minutes, the 'tAP' message will light up	tAP	<ul style="list-style-type: none"> Did you connect the Inlet Hose and open the water tap? Is the Inlet Hose or water tap frozen? Is the water supply shut OFF? Does foreign matter block the inlet hose filter? Is the HOT Inlet Hose connected to the COLD valve? Is the COLD Inlet Hose connected to the HOT valve? Is the water pressure low?
Continuous water supply	tAP	<ul style="list-style-type: none"> The inlet valve is defective. The pressure sensor is defective The PCB is defective. The pressure tube is loose or leaky? <p>Please contact your nearest IFB Care for help.</p>

CHECK POINT	DISPLAY MESSAGE	SYMPTOM
<ul style="list-style-type: none"> If the clothes are collected on one side during spin and the drum becomes unbalanced, the spin operation will be interrupted and this unbalanced condition will be automatically corrected by the program. However, if the unbalanced condition is unchanged despite the automatic program, the 'Unb' message will be displayed. Make sure the laundry is spread out evenly in the tub/Redistribute the load by hand. Make sure the washing machine is levelled on a flat surface/ Level the appliance. Is the lid (door) open? <p>The 'dor' message will be displayed in this case</p>	Unb dor	The washer will not spin
<ul style="list-style-type: none"> Is the Drain Hose frozen? Is the Drain Hose blocked by dirt? Is the Drain Hose kinked or deformed? Is the Drain Hose placed too high? Is the end of the Drain Hose immersed in water? 	drE	The washer will not drain. If the drain is not finished within ~20 minutes, the 'drE' message will be displayed
Machine will start automatically after the voltage decreases to safe operating level. If this error display persists, or occurs frequently, contact your electrician to locate the fault in the electrical system.	ACH	Input voltage is too high
Machine will start automatically after the voltage increases to safe operating level. If this error display persists, or occurs frequently, then contact your electrician to locate the fault in the electrical system.	ACL	Input voltage is too low

SYMPTOM	DISPLAY MESSAGE	CHECK POINT
Voltage is too high or low	FrH	Machine will start automatically after the frequency decreases or increases to safe operating level. If this error display persists or occurs frequently, contact your electrician to locate the fault in the electrical system.
	FrL	
Load sensing error	LSE	<p>The load sensing (detects the weight of load) is inferior.</p> <ul style="list-style-type: none"> • Press the Power button to turn the power OFF. • Press the Power button to turn the power ON. • Operate your washing machine again. <p>This error will also be displayed in case of overloading of clothes/motor, overload/clutch malfunction or incorrect belt tension.</p> <p><i>If the error display persists or occurs frequently, contact IFB Care.</i></p>
Water level sensing error	PrS	The water level sensing is inferior. <i>Contact IFB Care.</i>
Motor error	E1,E2,E3	<p>The motor is defective (open error).</p> <ul style="list-style-type: none"> • Press the Power button to turn the power OFF. • Press the Power button to turn the power ON. • Operate your washing machine again. <p><i>If the error display persists or occurs frequently, contact IFB Care.</i></p>
Overheating error	HEt	<p>Error will be displayed during overheat condition. Restart the machine to check the consistency of the error display.</p> <p><i>If the error display persists or occurs frequently, contact IFB Care.</i></p>
	CO n	<p>Switch off the machine by pressing Start/Power button, wait for 1.5 secs and restart.</p> <p><i>If the error display persists, then switch off the machine and contact IFB Care.</i></p>

TECHNICAL SPECIFICATIONS

Model	7.0 Kg/8.0 Kg
Power Supply	AC 220–240 V/50 Hz
Dimensions WxDxH mm	543x575x912 (700/800 models) 543x575x946 (801 models)
Net Weight	31 Kg
Capacity	7 Kg of dry cotton (7 Kg models) 8 Kg of dry cotton (8 Kg models)
Wash Care Programs	8+7** programs (7.0 Kg) 10+5** programs (8.0 Kg)
Selector Buttons	Start/Pause, Soak, Wash, Water, Steam/Temperature, Rinse/Child Lock, Spin/Air Dry, WiFi Reset, PreClean/Tub Clean, Power, Programs
Program Selector	Program Navigator button
Water Consumption	≤23 Ltr/Kg/Cycle (Cotton*)
Water Pressure	0.3 Bar~8 Bar (3.5–8 Ltr/min)
Power Consumption	Refer product label

* Program setting for BEE test in conformity with IEC 60456

** Programs available via My IFB app



IFB
Set Yourself Free

CEO in the morning

Chef by evening
Indulge in your passion.
Do more with your time.
Set Yourself Free with IFB.

Installation report

Model _____ Serial no _____

Customer's name _____

Phone (residence) _____ (office) _____

Address _____

Installation check points

Machine delivered on _____

Machine installed on _____

Service engineer to tick appropriately

• Any major transit damage to the machine observed?	yes <input type="checkbox"/>	no <input type="checkbox"/>
• Condition of earthing? Plug Point (16 Amp, 220–240 V AC with MCB or other automatic short circuit protection devices) good? If poor, has customer been advised to correct the same?	yes <input type="checkbox"/>	no <input type="checkbox"/>
• Advised to turn OFF machine after use?	yes <input type="checkbox"/>	no <input type="checkbox"/>
• Voltage cut out (high/low) fitted if voltage fluctuations high in area?	yes <input type="checkbox"/>	no <input type="checkbox"/>
• Machine levelling procedure and importance explained?	yes <input type="checkbox"/>	no <input type="checkbox"/>
• Detergents and bleach recommendation—relevant Detergent tray chambers explained?	yes <input type="checkbox"/>	no <input type="checkbox"/>
• Safety instructions explained?	yes <input type="checkbox"/>	no <input type="checkbox"/>
• Explained all features of washing machine to the customer?	yes <input type="checkbox"/>	no <input type="checkbox"/>
• Display function explained (if applicable)?	yes <input type="checkbox"/>	no <input type="checkbox"/>

Service engineer to tick appropriately•		
• Explained procedure for cleaning inlet hose filter?	yes <input type="checkbox"/>	no <input type="checkbox"/>
• Explained common error codes (if applicable)?	yes <input type="checkbox"/>	no <input type="checkbox"/>
• Explained unbalance error in Spin mode?	yes <input type="checkbox"/>	no <input type="checkbox"/>
• Explained program selection, program and button options (or knobs), indicator lamp/status LED/LCD function, buzzer function (if applicable)?	yes <input type="checkbox"/>	no <input type="checkbox"/>
• Explained troubleshooting?	yes <input type="checkbox"/>	no <input type="checkbox"/>
• Check following for proper order		
- Inlet hose	yes <input type="checkbox"/>	no <input type="checkbox"/>
- Detergent tray	yes <input type="checkbox"/>	no <input type="checkbox"/>
- Rat protection mesh cut-outs fitted	yes <input type="checkbox"/>	no <input type="checkbox"/>
- Drain hose	yes <input type="checkbox"/>	no <input type="checkbox"/>
• Informed user of need to keep drain hose straight and maximum height of draining?	yes <input type="checkbox"/>	no <input type="checkbox"/>
• Demo given to customer?	yes <input type="checkbox"/>	no <input type="checkbox"/>
• Warranty terms explained?	yes <input type="checkbox"/>	no <input type="checkbox"/>

Installed by _____ Signature _____

Customer's response

The installation person was courteous and helpful yes ☐ no ☐

I would describe my experience with the process of installation as
 Unacceptable ☐ Satisfactory ☐ Non-satisfactory ☐ Very satisfactory ☐

I certify that the above information and checks have been done to my satisfaction and I am fully satisfied with the installation of the washing machine.

Customer's signature

Date

Time

Warranty—customer copy

Model _____

Serial no _____

Dealer's name _____

Date of purchase _____

Customer's name _____

Address _____

Phone _____

Email _____