

TRUSTED BY OVER **7 MILLION** SATISFIED CUSTOMERS



TL421PKMAN013	D
---------------	---

Shop 24x7 @ www.ifbappliances.com | Email customerservice@ifbglobal.com | Call 080 458 45678/080 695 45678
www.facebook.com/IFBappliances twitter.com/IFBappliances www.instagram.com/IFBappliances
www.youtube.com/channel/UCJTIHxPTfez4mrbVBIQLb9Q



wysliwyg.co.in | May 2023

**TL-RPSS/R2BSS/R2DSS/R2WRS/
R2MCS/R2BRS 6.5/7 KG AQUA**

User Manual

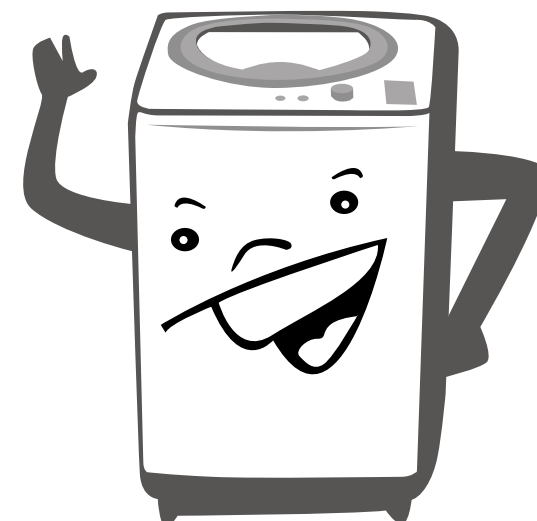
IIFB
Set Yourself Free



Read instructions before switching on the washing machine.
Observe safety guidelines for installation.

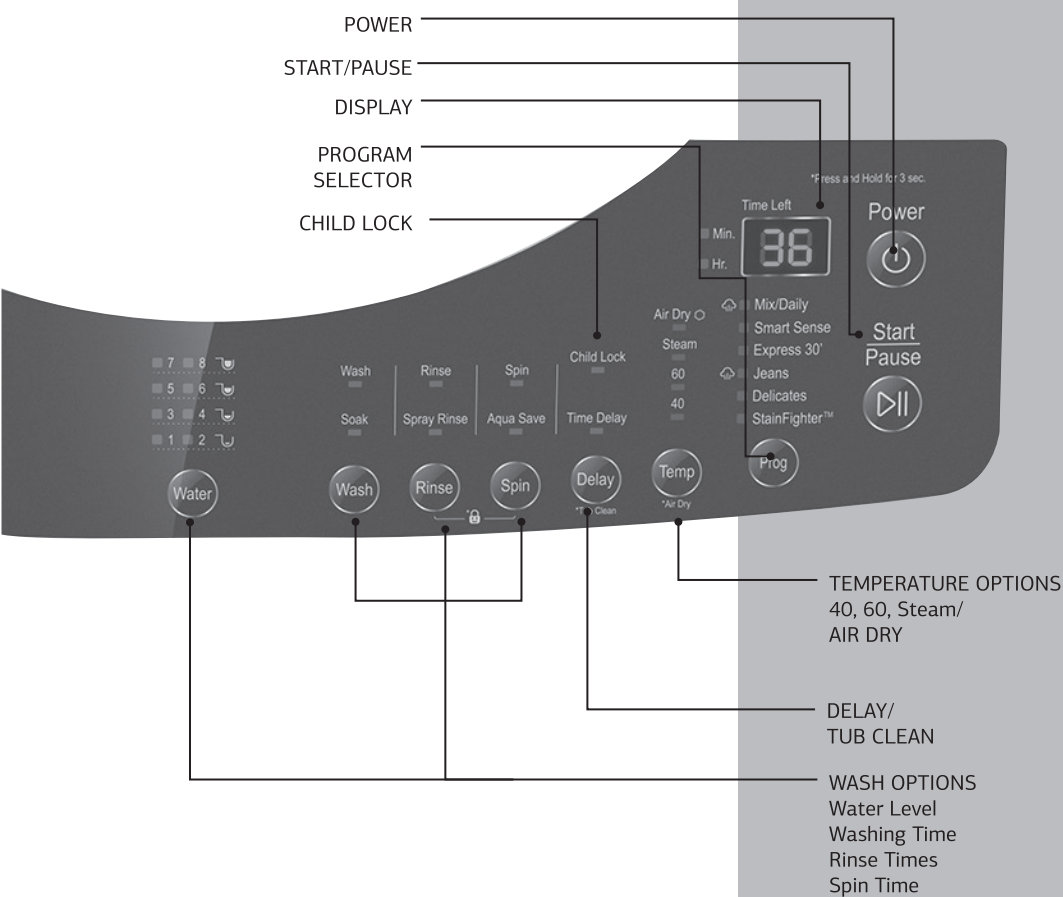
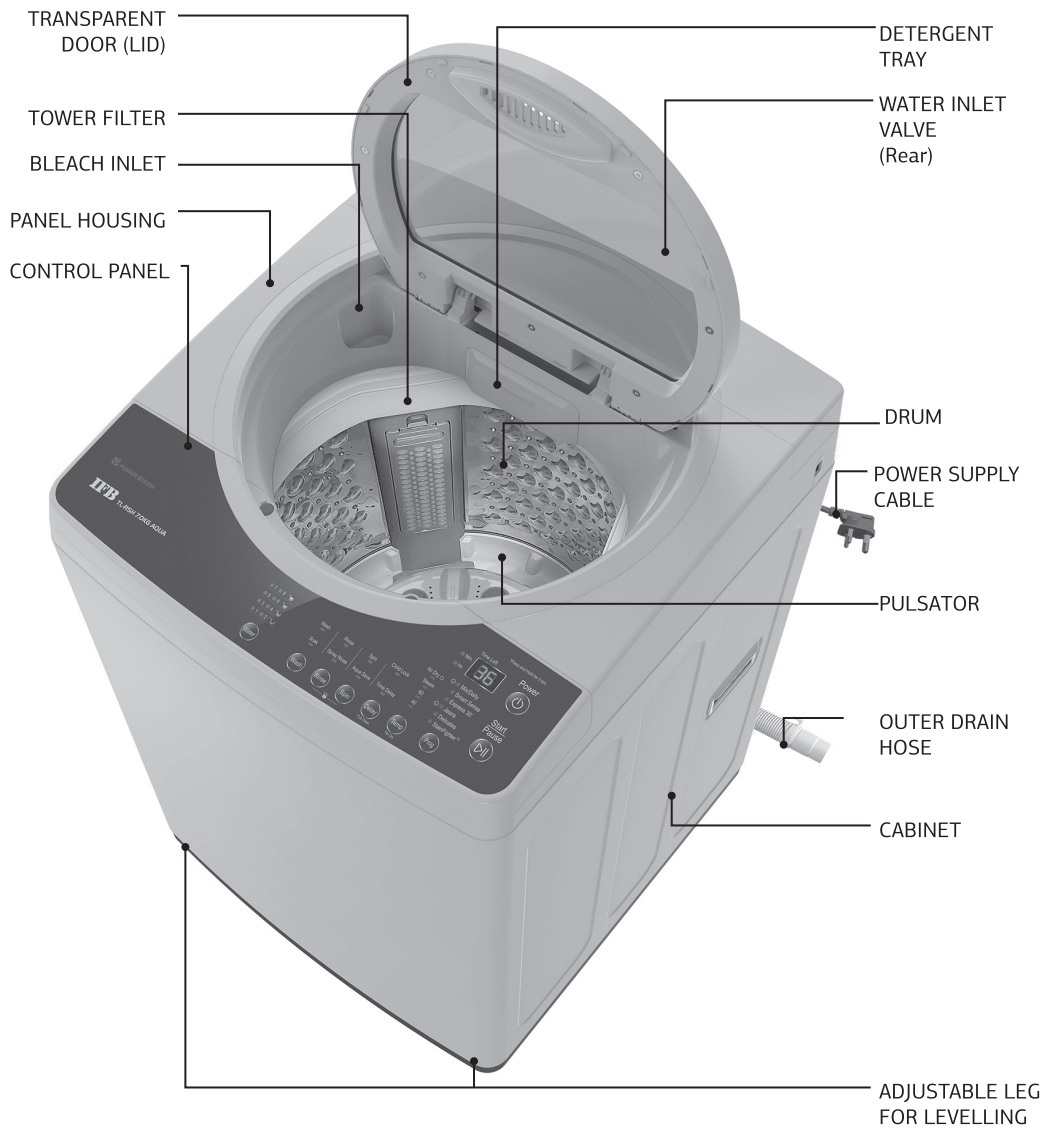
Welcome to the IIFB family

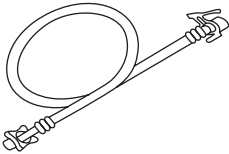
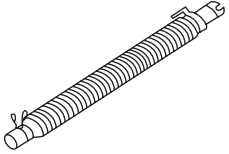
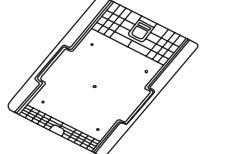
India's best fully automatic washing machine is now at your service.
We thank you, hope it serves you well and becomes an integral part
of your family!



The A to Z of your washing machine

NAMES OF PARTS



ACCESSORIES		
WATER INLET HOSE 1 piece	OUTER DRAIN HOSE 1 piece	RAT MESH 1 piece
		



SAFETY GUIDELINES FOR INSTALLATION

- Please operate the machine after removing all the packaging.
- Keep the packaging material. It may come in handy when shifting residence.
- Transportation tip: During transportation of the machine, the assembly holder protector and tub cushion must be included to prevent damage to your machine.
- Old hoses must not be reused. Always use new hoses delivered with the machine.
- Before cleaning the machine, ensure that you disconnect the main electricity supply and take the plug out of the socket.
- All washing machine installation work must be carried out only by authorised IFB Service Personnel.
- Pre-installation work such as plumbing and electrical connections must be carried out by a qualified fitter, electrician or technician.
- Do not operate the appliance where inflammable substances such as oil, benzene or highly inflammable gas are present. Such materials may cause fire or explosion. Never use combustible detergents.
- Do not install your washing machine in rooms where temperatures below freezing point may occur. Frozen hoses may burst under pressure. The reliability of the electronic control unit may be impaired at temperatures below freezing point and above 50°C.
- Install the machine in a room with adequate ventilation. Avoid a room with no windows. The back of the machine should be at least 4 inches (100 mm) away from the wall.
- The machine is provided with ventilating openings on the base. Hence it is always recommended to put the machine on the floor after removing any carpet, mats etc.



- Do not install the machine in a damp area or a bathroom with exposure to a direct shower.
- Protect the machine from direct sunlight and rain.
- Do not place the machine on a slanting, uneven or unstable surface.
- A concrete floor is the most suitable installation surface for a washing machine, being far less prone to vibration during the spin cycle as compared to wooden floorboards.
- The washing machine is not suitable for connection to a hot water supply.
- The machine is designed to operate with water flow pressure between 0.3 Bar–8 Bar. Lower water pressure may lead to malfunctioning of the machine.



SAFETY INSTRUCTIONS

Read all instructions and explanations for installation carefully before use. Follow the instructions carefully. Keep the operating instructions handy for later use.

- **Any damage caused by cockroaches insects, termites etc will not be covered by the appliance guarantee.**
- Do not install and use a damaged machine. Before connecting the machine, ensure that the connection data on the data plate (fusing, voltage and frequency) match the main electricity supply. If in any doubt, consult IFB Care.
- Do not wash or dry articles that have been cleaned, washed, soaked in or dabbed with combustible or explosive substances (such as oil, paint, gasoline, degreasers, dry cleaning solvents, kerosene etc). This may result in a fire or an explosion.
- Before using the machine for the first time, check that all the packaging has been removed.
- Turn OFF the stopcock if the machine is to be left for a length of time (eg holidays) especially if there is no floor drain (gully) in the immediate vicinity.
- Children should not play with the appliance.
- Cleaning and user maintenance should not be performed by children without supervision.



CAUTION

- The electrical safety of this appliance can only be guaranteed when continuity is complete between the machine and an effective earthing system, which complies with local and national regulations. It is most important that a qualified electrician regularly tests the basic safety requirement.
- The manufacturer cannot be held responsible for the consequences of an inadequate earthing system.
- For safety reasons do not operate this appliance on an extension cable. Extension leads do not guarantee the required safety of the appliance.
- There is danger of overheating in case instructions or recommendations are not followed.
- The machine is built in accordance with current safety requirements.
- Unauthorised repairs could result in unforeseen dangers for the user, for which the manufacturer cannot accept responsibility. Only authorised IFB personnel should undertake repairs.
- The machine is completely isolated from the electricity supply only when it is switched OFF at the wall socket and the plug is taken out, or it is switched OFF from the main source, or the main fuse is taken out or MCB switched OFF.
- The machine must be connected to the onsite water supply only using a new hose kit. Old hoses must not be reused. Only genuine IFB original spare parts must replace faulty components. Only when these parts are fitted can the safety standards of the machine be guaranteed.
- If the connection cable is faulty it must be replaced only by an IFB approved service technician to protect the user from danger.



About eWaste

eWaste or Electronic Waste or Waste Electrical and Electronic Equipment (WEEE) are the terms used to describe old, end-of-life or discarded appliances using electricity.

Dos

- Always dispose of products that have reached end-of-life by calling an authorised local eWaste recycler.
- Always drop off used electronic products, batteries or accessories at your nearest authorised eWaste recycler when they reach end-of-life.
- Whenever possible, or as instructed, sort packaging materials according to responsible waste disposal and recycling options.

Don'ts

- Do not dismantle electronic products on your own.
- Do not throw electronic products in bins with a 'Do Not Dispose' sign.
- Do not give eWaste to informal and unorganised sectors such as local scrap dealers and rag pickers.
- Do not dispose of your product in garbage bins along with municipal waste that ultimately reaches landfills.

- Do not pull the cord to disconnect the plug. Hold the plug itself. Do not insert or remove the plug with damp hands.
- Do not drag the washing machine if it contains the wash load or when in operation.
- Do not move the washing machine if it contains the wash load or when in operation.
- Do not spill water over the machine. In case of spillage, wipe dry. Avoid the machine coming in contact with floor cleaning chemicals.
- Do not wash or spray water over the switch or control panel.
- Do not wash shoes or utensils in the machine.
- Use detergent recommended for the washing machine.
- Keep your machine dry to avoid corrosion/rusting. Take special care to wipe the machine after cleaning coin trap.
- Check the labels on garments for the determining conditions under which fabrics are to be washed.
- The machine is tested with water during assembly for performance checking. Condensed droplets of water may remain inside the drum. It is advisable to run the machine without a wash load in the Cotton maximum temperature program with detergent for the first time after installation.
- Ensure that the machine is connected to a 3 pin socket with good earthing and 16 Amp MCB or other automatic short circuit protection devices.
- Textiles which have been pre-treated in solvent based cleaning agents, must be thoroughly rinsed in clean water before being washed in the machine.
- Never use solvent based cleaning agents in this machine, as this may result in damage to component parts and create toxic fumes. Such detergents also pose a threat of fire and explosion hazards.
- If excessive vibrations observed on trolley, then trolley needs to be replaced immediately as it can affect reliability of machine thereby reducing the machine life



Risks of Improper Handling of eWaste

eWaste usually includes components which, if disposed of improperly, hold environmental consequences such as air, water and soil pollution and also pose risks to human health.

By ensuring this product is disposed of correctly, you will help prevent potential negative consequences for the environment and human health. Components and materials used in the manufacture of this washing machine are fully compliant with provisions of hazardous substances outlined in eWaste Management Rules, 2016.



For Detailed Information and Disposal Request

Contact IFB Care at 08045845678/08069545678 and provide your details to our representative to request your product to be picked up for disposal.

- Only use dyes specified by the manufacturer as being suitable for use in a domestic washing machine. Always read the manufacturer's instructions carefully.
- Colour runs and dye removers contain sulphur compounds, which can cause damage such as corrosion. Do not use these products in this machine.
- For machines with a porthole door, remember that the porthole glass will be hot when washing at very high temperatures. Do not let children touch it.
- Always make sure that the drum is stationary before removing clothes. Reaching into a moving drum is extremely dangerous.

Flooding danger

- While hooking the drain hose into a wash basin, check that the water drains OFF quickly to prevent the sink from overflowing. Make sure the drain hose is secure so that the force of the water flowing out of the hose does not dislodge it. Otherwise this will result in flooding.
- Take care to ensure that foreign objects (eg nails, pins, coins, paper clips etc) do not find their way into the machine with the washing. These may damage components of the machine (eg suds container, drum etc), which in turn can result in damage to the washing.



CONTENTS

	PAGE
Safety Guidelines	04
Safety Instructions	06
Chapter 1: Features and names of parts	
Key features	12
Chapter 2: Getting started	
Installing your machine	14
Before you start	18
Preparing laundry and detergent	19
The functions of the control panel	20
Washing procedure	22
Chapter 3: Working with your machine	
Washing procedure	24
General procedure for operation	30
Water level and amount of detergent	33
Chapter 4: Get more from your machine	
Caring for your washing machine	36
Cleaning of your washing machine	38
Easy tips to remove stains	39
Chapter 5: Useful information	
Troubleshooting	42
Technical specifications	45
Service record	47
Warranty	51



Warning Electrical safety of this appliance can only be guaranteed when continuity is complete between it and an effective earthing system which complies with local and national safety regulations. It is important that this basic requirement is present and regularly tested. When there is any doubt, the onsite wiring system should be inspected by a qualified electrician. IFB cannot be held liable for the consequences of an inadequate earthing system (eg electric shocks etc).

Precautions This appliance conforms to safety requirements. Inappropriate use can lead to injury or damage to property. Please read this user manual carefully. It contains information on safety, installation, use and maintenance.

Use only less foaming detergents in this machine to avoid inconvenience or damage. It will help you to use your new washing machine optimally and avoid accidents or damage to the appliance.

KEY FEATURES

**DEEP
CLEAN**

**aqua-
énergie**

**aqua
spa**



**3D
WASH**



WHAT IS DEEP CLEAN?

A magical cleaning experience that is tough on stains and gentle on clothes. Driven by the powerful Pentad Pulsator Cleaning Engine, IFB Deep Clean washing machines bring a sparkle to your clothes.

4 unique technologies drive the Deep Clean experience—

1 Aqua Energie

Energises water to get the best out of detergents and takes it deep inside the fabric to dislodge the dirt.

2 Aqua Spa Therapy

An indulgent water treatment surrounds your clothes. Stubborn stains are shaken, loosened and rinsed away to give you 100% rejuvenated clothes.

3 Pentad Pulsator

The new pulsator engine, with a robust five vane design, removes stubborn dirt. Soft Scrub Pads gently dislodge dirt and stains, easily and quickly, for best-in-class washing.

4 Tri Axial Cloth Movements

The new Pentad vanes actively engage with clothes in the drum, moving them on all three axes (X, Y, Z). Gently separates dirt from fabrics.

3D Wash 3D dynamic water jets and Bi-axial Clothes Rotation work together to create the Deep Clean magic—

- mixing the detergent thoroughly with the water
- loosening tough dirt
- wash dirt away and rinsing out all traces of detergent

CRESCENT MOON DRUM

Smooth crescent moon grooves on the drum surface create a gentle water cushion that prevents damage to fabrics.

In-built heater

An in-built heater with an option to select the temperature ensures the best wash by activating the detergents enzymes to remove the allergens from the clothes.

INTELLIGENT WASH PROGRAMS

Let your clothes enjoy the sensory pleasure of Deep Clean with IFB's intelligent wash programs.

Time and water saving

a) Smart Sense b) Express 30', c) Mix/Daily

Fabric friendly

a) Jeans b) Delicates

Hygiene

a) StainFighter™

MACHINE CARE

High-Low Voltage Protection

A smart microcontroller continuously monitors the online voltage fluctuations and temporarily stops the program to protect the machine in case the voltage drops below 165 ± 10 V or rises above 270 ± 10 V. The program will resume once the voltage is within the safe operating range.

Program Memory Backup

The program resumes from where it left off in case of power failure. No repetition of the cycles saves time, water, power and adds longevity to the machine.

Auto Imbalance System

This system automatically determines the unbalanced clothes in the machines and redistributes the clothes by taking on additional water, making the machine extremely stable during the spin cycle.

USER CONVENIENCE

Child Lock

Prevents children from tampering with machine settings.

Auto Softener Dispenser

A specially designed compartment for you to add softener before you start the wash.

Bleach Dispenser

A special inlet allows you to dispense liquid bleach.

Air Dry Option

Fresh air enters through the exchange window to give clean and healthy drying.

Wheels

For easy mobility of the machine.

Lint Tower Filter

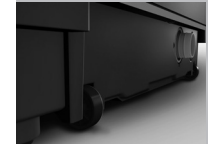
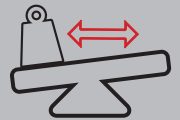
The lint filter effectively captures fabric fibres floating inside the tub and prevents them catching onto other clothes.

Auto Tub Clean

Automatically ensures tub hygiene after Wash cycles.

Spray Rinse

Jets of water are injected into your clothes with a spraying mechanism for best washing and rinsing effect.



Programs may vary from model to model.

2 GETTING STARTED WITH YOUR MACHINE

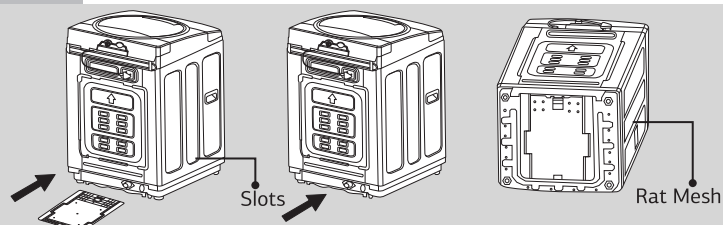
INSTALLING YOUR MACHINE

1 Select the right spot

Unpack and place the new washing machine in proximity to both water and electrical connections. Ensure that the floor is properly levelled.

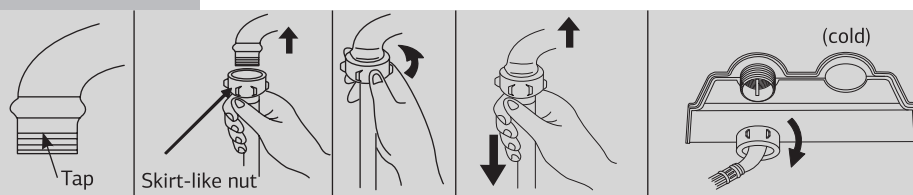
2 Installation of Rat Mesh

- After unpacking, remove the rat mesh from the top cushion.
- Tilt the washing machine 45° forwards. Insert the rat mesh between the slots provided at the rear of the washing machine.
- Push in the rat mesh and press it upwards till you hear a 'click'.



3 Connection to the water supply

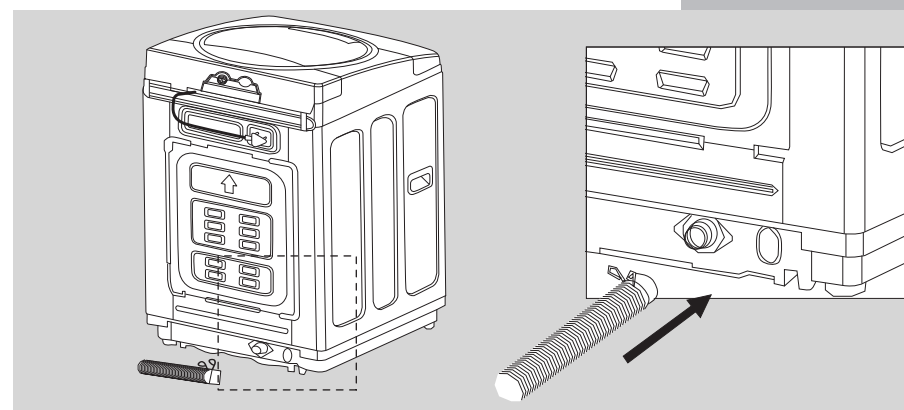
- Fix the water inlet hose to the tap.
- Pull the skirt-like nut on one end of the water inlet hose upwards and screw it into the tap tightly.
- Hold the water inlet hose and pull it downwards to check whether it is fixed securely.



- Fix the other end of the water inlet hose into the machine.
- This machine must only be connected to the onsite water supply using a new hose kit. Old hoses must not be reused. After installation of the water inlet hose, do not immediately start the washing machine. First open the tap to create water pressure in the hose to check for leakage from the connectors at both ends. If the pressure is too high, close the tap a little to avoid water leakage.
- The machine is designed to operate with water flow pressure between 0.3 Bar–8 Bar. Lower or higher water pressure can lead to malfunction of your machine.

4 Connection to the drain hose

- Never forget to install the drain hose before operating your machine. If the packing is removed, you will find a drain hose.
- Connect the drain hose to the drain outlet at the rear of the washing machine.

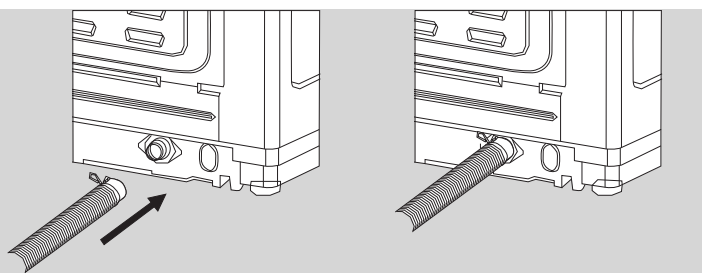


Note The opening must not be obstructed by carpeting when the washing machine is installed on a carpeted floor. Drain faults will result if the drain hose is blocked.

A protection film is provided for the safety of the cabinet during transit. It may be removed at the time of installation.

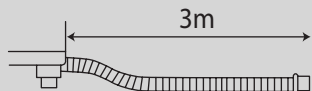
How to insert the drain hose into the drain outlet

- Insert the drain hose into the drain outlet of the machine.
- Press the hose clamp.
- While pressing, push the drain hose towards the body.
- Release the hose clamp after pushing the drain hose.

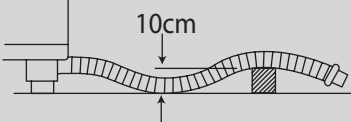


How to install the drain hose

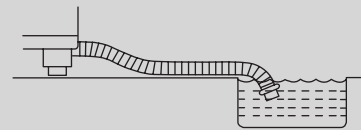
In case the drain hose is extended, don't let the total length exceed 3 m.



In case it goes over a door sill, don't let the height of the drain hose exceed 10 cm from the bottom of the washer.

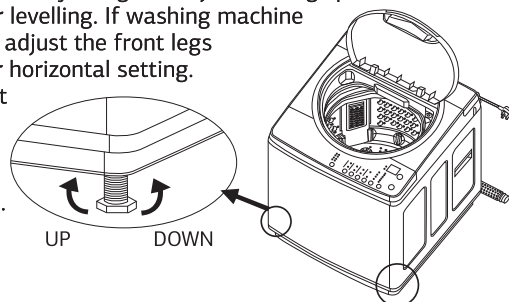


Be careful that the end of the drain hose is not immersed in water.



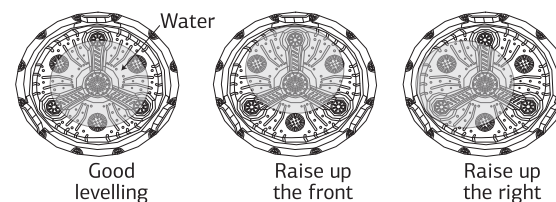
5 Levelling

If the washing machine is installed on an unsuitable floor, it could make considerable noise, vibration and malfunction. Level the machine by using the adjustable legs provided at the bottom for levelling. If washing machine is not levelled, adjust the front legs up or down for horizontal setting. Make sure that the machine rests on all four feet on a level surface.



How to check the level

Open the lid of the washing machine, fill the water just up to the level of the Pulsator and check for uniform distribution. Adjust the legs so that the Pulsator is positioned at the centre as shown in the figure below.



6 Electrical connection

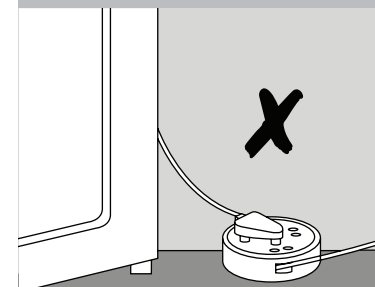
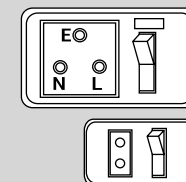
- It is mandatory to have a 16 Amp, 3 pin 220–240V AC, 50 Hz electrical point with 16 Amp MCB or automatic short circuit protection device within 1 metre of the machine.
- Make sure your home has proper earthing and there is a firm connection between the plug and the socket. IFB recommends a separate MCB on the socket of the washing machine.
- Proper earthing on the power socket is critical to reliable performance.



Warning—Electrical shock hazard

Failure to follow these instructions could result in death or serious injury.

- Electrical earthing is required for this machine. If it does not fit the outlet, have a proper outlet installed by a qualified electrician.
- Do not earth with a gas pipe.
- Do not change the power supply cable plug. If the connection cable is faulty or damaged, do not operate the washing machine. It must only be replaced by an IFB approved service technician to protect the user from danger.
- Check with a qualified electrician if you are not sure the washing machine is properly earthed.



BEFORE YOU START

Check your machine

Ensure that the washing machine has been installed and connected properly.

• Electrical connection

It is mandatory to have a 16 Amp, 3 pin 220–240V AC, 50 Hz electrical point with a 16 Amp MCB or automatic short circuit protection device.

• Water connection

The water supply point with an external thread 3/4" parallel thread should be available within 1 metre of the machine location. Turn ON the water tap after the connection is secure.

• Drain hose connection

In case it goes over a door sill, do not let the height of the drain hose exceed 10 cm from the bottom of washer.

Your machine was tested before leaving the factory. To remove any water left over from testing procedures, the first wash cycle should be carried out without laundry in the washing machine.

- Turn ON the water tap.
- Pull the detergent tray out till the end.
- Pour approximately 20 gms of detergent into the detergent tray.
- Close the detergent tray.
- Set the Program Selector knob to Tub Clean.
- Press the Start/Pause button.
- After the program finishes, power will turn OFF automatically.

PREPARING LAUNDRY AND DETERGENT

1 Sort the laundry

- Remove everything from pockets.
- Close zippers, hooks and strings.
- Pre treat collars, cuffs and stains.
- Sort the laundry.
- Check for wash care symbols/labels.

2 Load the laundry

- Check and remove any small articles or any laundry items left inside the drum or on rubber gasket.
- Place garments loosely inside the drum.
- Load garments one by one.
- Close the door and press till you hear a click.

*** Note** Silk, wool, lacy clothes, lingerie, nylon stocking and delicate clothes may be at risk of damage and cause problems to the machine. Use a laundry net bag.

Add detergent

- ### 3
- Pull the detergent tray out till the end.
 - Dispense the correct amount of detergent.
 - Close the detergent tray.
 - Use the softener dispenser chamber to dispense fabric conditioners/additives. Take care not to exceed the maximum level.

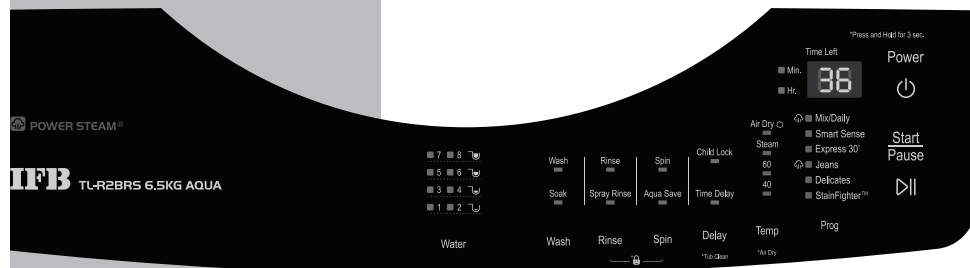
Note For Smart Sense program only—
Always pour diluted fabric conditioner/additives directly into the drum during rinse water filling.

- If desired, add measured liquid bleach to the bleach inlet. Use only liquid bleach in the bleach inlet. Follow manufacturer's directions for safe use.

***Note** Always use detergents recommended for washing machines only. Follow the detergent package directions as using too little or excessive detergent is a common cause of laundry problems. Soap flakes or granulated soap powders should not be used in your washing machine. When washing woollens or silk, remember to use the detergent type recommended by the manufacturer.



THE FUNCTIONS OF THE CONTROL PANEL



Power



- Press the Power button to turn the power ON or OFF.

Prog



- The Program button is used to select the fully automatic programs. You can select the program you want and the corresponding LED is turned on.

Water



- The Water button is used to adjust the amount of water supplied according to the amount of laundry to be washed.
- As the button is pressed, the water level is selected as follows—6, 7, 8...1, 2, 3, 4

Temp



- The temperature button is used to select the temperature of the water to be supplied.
- You can select the desired water temperature either from 40°C, 60 °C or Steam by pressing the temperature button.
- You can also select Air Dry using temperature button. Press and hold this button for 3 secs to select Air Dry option.

Note Temperature LEDs remains OFF when Cold temperature is selected.

Wash



- The Wash button is used to adjust the washing time and soak time.
- As the button is pressed, the washing time will be repeated as follows—16, 18, 20, 58 (Soak), 68 (Soak), 78 (Soak)...0, 3, 6, 9, 12, 16

Rinse



- The Rinse button is used to adjust the number of rinse cycles. You can select Rinse or Spray Rinse.
- If you select Spray Rinse, water will be supplied continuously during the rinse cycle. As a result, water penetrates the clothes, removing all detergent stains, giving a perfect wash with efficient use of water.

Spin



- The Spin button is used to adjust the spin time.
- As the button is pressed, the spinning time (minutes) will be repeated as follows—5, 6, 7, 8, 9, Aqua Save 0, 1, 2.
- Use Aqua Save for delicate textiles and net curtains.
- If you select Aqua Save, all processes can be carried out without the final spin. The laundry is left in the final rinse water. If you want to run the drain and spin process, press the Start/Pause button.

Delay



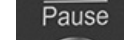
- The Delay Start button is used when the wash program is to start later. The start of the program can be delayed from 60 mins to 24 hrs.
- As the button is pressed, the delay time will be repeated as follows—60 (1 hr), 2, 3...11, 12, 13...22, 23, 24...60 (1 hr) 2, 3.
- Press and hold this button to select Tub Clean program.

Temp



- Press and hold Temperature button to select Air Dry option.
- Tub Dry is used for making the inner drum moisture free.
- Do not put any laundry in the drum during this operation.

Start/Pause



- The Start/Pause button is used to start or temporary stop the operation.
- Select the program that you want to change.
- Press the Start/Pause button again to start the operation.

Rinse



Spin





Child Lock

- Child Lock is used when you want to protect any accident occurring from handling of the washing machine by a child.
- While the washing machine is in operation, press the Rinse and Spin buttons together for 3 seconds to select or deselect the Child Lock function.
- The Child Lock LED on the digital display lights up.
- While the Child Lock option is selected, no button will function except the Power button.

WASHING PROCEDURE



Fully automatic programs

Usage and default selection

Program	Water Level	Water Temperature	Wash Time (min)	Rinse Cycles	Spin Cycles
Mix/Daily 	-	-	-	-	-
Smart Sense	-	-	-	-	-
Express 30'	5	Cold	6	1	3
Jeans 	6	Cold	18	3	9
Delicates	6	Cold	6	1	1
StainFighter™	3	40	20	2	6



Wash guide map

Program	Water Level	Available Options							Laundry Weight (Kg)
		Wash Temp	Wash Time	Rinse Cycles	Spin Cycles	Steam	Delay Wash	Air Dry Time (min)	
Mix/Daily 	1~8	Cold/40/60	0~20 & Soak	0~5 & Spray Rinse	0~9 & Aqua Save	✓	✓	✓	Rated Capacity
Smart Sense*	1~8	Cold/40/60	0~20 & Soak	0~5 & Spray Rinse	0~9 & Aqua Save	✗	✓	✓	Rated Capacity
Express 30'	1~8	Cold	0~20 & Soak	0~5 & Spray Rinse	0~9 & Aqua Save	✗	✓	✓	2.0 Kg
Jeans 	1~8	Cold/40/60	0~20 & Soak	0~5 & Spray Rinse	0~9 & Aqua Save	✓	✓	✓	Rated Capacity
Delicates	6~8	Cold	0~20	0~5 & Spray Rinse	0~3 & Aqua Save	✗	✗	✗	2.0 Kg
Stain Fighter™	1~8	Cold/40/60	0~20 & Soak	0~5 & Spray Rinse	0~9 & Aqua Save	✗	✓	✓	2.0 Kg

✓ Option available and can be selected.

✗ Option not available and cannot be selected.

* Program setting for BEE test in conformity with IEC 60456.

Auto Tub clean

- Function is available by default.
- Not available for water level 8 in Smart Sense Program.
- Not available for Delicates program.

Note Depending on inlet water pressure, water hardness, quantity and type of textile, detergent used, unbalance detection, ambient condition, selected additional functions and input power supply fluctuations, the actual values given in the User Manual or with the machine can deviate from the declared standard values as they are tested according to laboratory conditions. The design and specifications are subject to change without prior notice due to continuous improvement and product development.

WORKING WITH YOUR MACHINE

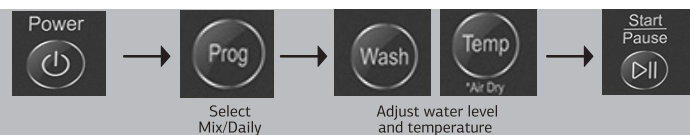


Washing procedure for fully automatic programs

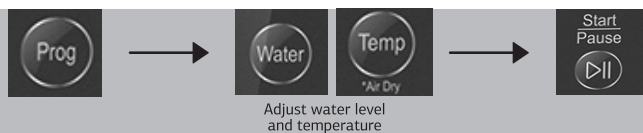
1 MIX/DAILY

Use this program for daily cloth that needs better cleaning, this program is designed with special rhythms to remove stubborn dirt from the fabrics.

Note Do not wash delicate fabrics in Mix/Daily program. Use delicate fabrics only in delicate program.

**2 SMART SENSE**

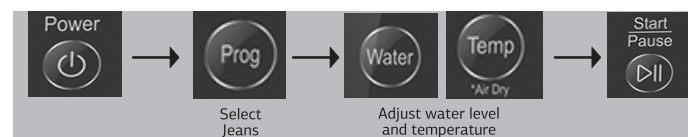
- An intelligent program that uses advanced sensors and microchip to automatically determine the laundry load and then optimise the water requirement, wash time, number of rinse cycles and spinning time.

**3 EXPRESS 30'**

- You can use this program to wash a small (2 Kg max) load of lightly soiled garments in a short time.

**4 JEANS**

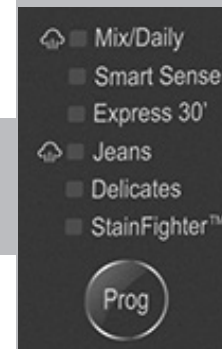
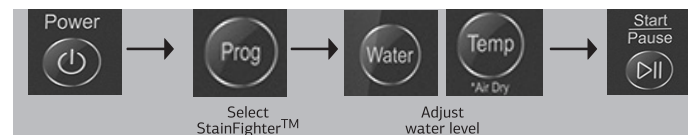
You can use this program to wash Jeans/Denim. For best results, wash denim inside out.

**5 DELICATES**

- Wash woollens/delicate garments (2 kg max) that are recommended for hand wash. The clothes are washed with a very gentle movement without damaging or stretching the fibres.
- Delay Wash, Air Dry time and Soak time are not selectable.
- Only 6~8 water level is selectable.
- It is recommended to put delicate clothes such as silk, wool, lingerie in a laundry net bag.

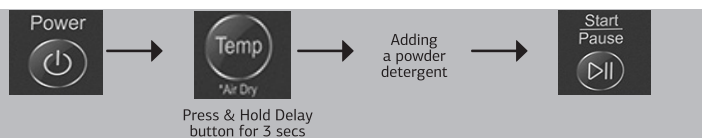
**6 STAINFIGHTER™**

- This program will wash using high temperature water to clear day-to-day stains.

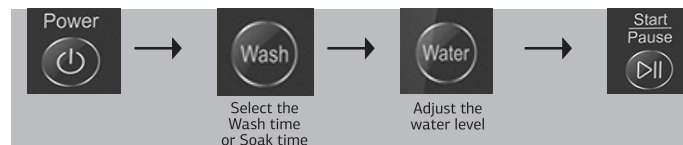


TUB CLEAN

- A special cycle to wash away any impurities, scaling, bacteria or unpleasant odours from the tub.
- Water level, Rinse time, Spin time and Air Dry time are not selectable.
- When using this program do not place any laundry inside the drum.
- Adding a small amount of powder detergent will additionally improve the effect of the Tub Clean program.
- Use this program at least once in a month.

**Tub Clean Reminder**

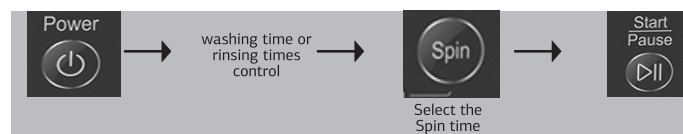
The Tub Clean Reminder will appear after every 40 washes. The display will show Run → tub → cln for 2 min after the end of the wash program. You can select the Tub Clean program or start another program. The reminder will be displayed for the next 5 programs if the Tub Clean program is not selected. It is recommended to run the Tub Clean program after every 40 cycles to keep your washing machine clean.

Partial process and combination**PROCEDURE OF PROCESSING**

- You can select the Wash time as follows—
0/3/6/9/12/16/18/20/58 (Soak)/68 (Soak)/78 (Soak)
- If you do not want the wash process, you must adjust wash time to '0'.



- You can select the number of rinses as follows—
Keep pressing the Rinse button to arrive at the number of Rinses desired as shown on the display. You can choose between normal Rinse and Spray Rinse. Maximum number of Rinses is 5 and this is limited based on the type of laundry. If you do not want the rinse process, you must adjust the rinse times to '0'. If you select Spray Rinse, the Spray Rinse display will be lit.



- You can select the Spin Time as follows—
0/1/2/3/4/5/6/7/8/9 minutes.
- If you do not want the Spin process, you must adjust the Spin Time to '0'
- To select Aqua Save, select the Spin Time as '0'. The Aqua Save LED will glow, indicating the option has been selected.
- Use this option to reuse saved water from the last rinse cycle in the next wash cycle. Best suited for washing daily household laundry loads.
- After finishing the wash cycle, 'rinS hold' message will appear on the display. Press the Start/Pause button if you want to operate drain and spin thereafter.

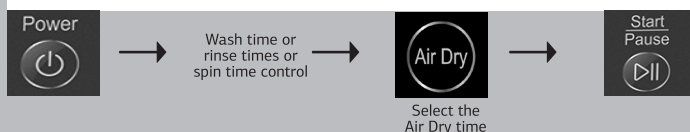
Note For Power Wash/Smart Sense, select the Wash/Rinse option before selecting the Aqua Save option.

PARTIAL PROCESS**Washing Time and Soak Time Control****Rinse Number Control****Spin Time Control**

3

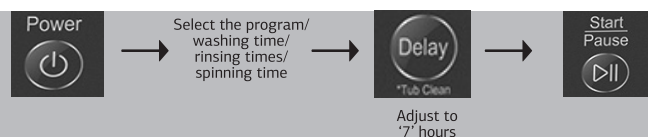
PARTIAL PROCESS

Air Dry Time Control



- Delay Wash can be set from 1 to 24 hrs.
- Procedure for use of Delay Wash. Example:
To set the machine to complete washing in 7 hrs.
1 Press the Power button to start.
2 Select the conditions which you want to use by turning the program selector and pressing each button.
3 Press the Delay button to adjust to 7.
Selected time means that washing will complete 7 hours later.
4 Press the Start/Pause button.
- To cancel the Delay Wash, press the Power button.
- In Delicates program, Delay Wash is not selectable.

Delay Wash Control



- After drainage, 'do' message will be displayed. In that case, close the door (lid) and press the 'Power' button to turn the power OFF.

Only Spin



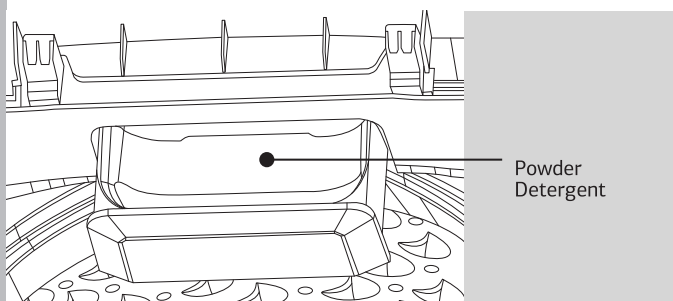
Only Drain



General procedure for operation

Loading the laundry

- Sort the laundry.
- Place garments one by one into the drum.
- For smaller loads reduce wash time setting.

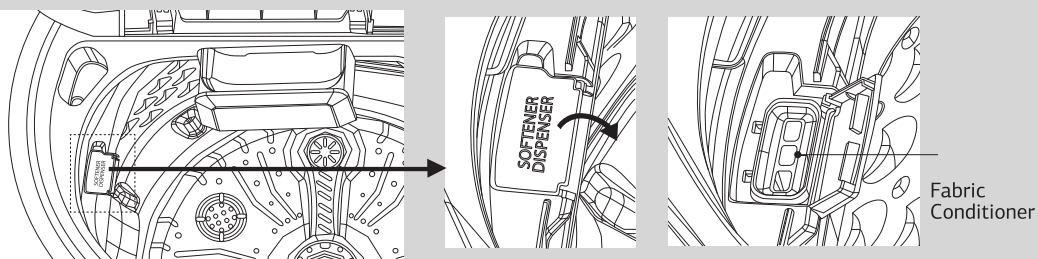


Add detergent

- Add measured detergent to the detergent tray.
- Follow manufacturer's directions.

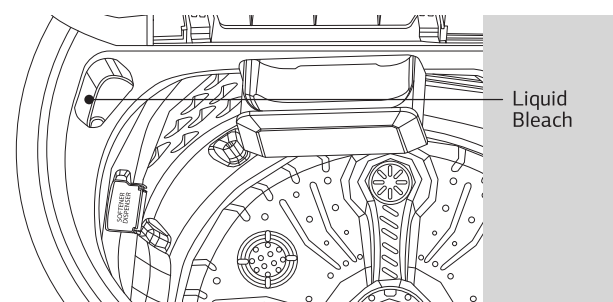
Add fabric conditioner/softener (optional step)

- If desired, add measured liquid fabric conditioner to the softener dispenser.
- Use the amount recommended on the package.



Add liquid bleach (optional step)

- If desired, add measured liquid bleach to the bleach inlet.
- Use only liquid bleach in the bleach inlet.
- Follow manufacturer's directions.



Operating the washing machine

- Close the washer lid (door).
- Press the 'Power' button.
- Select the fully automatic cycle.
- If desired, select the wash options.
- If desired, select the additional options.
- Press the 'Start/Pause' button.

Finishing after washing

- Washing machine will be turned OFF automatically.
- Close the water tap.
- Remove the power supply cable from the wall socket.

Washing symbols—a guide

	Resistant material
	Delicate fabric
	Washable at 95°C
	Washable at 60°C
	Washable at 40°C
	Washable at 30°C
	Hand wash
	Dry clean only
	Wool seal
	Bleachable in cold water
	Do not bleach
	Do not dry clean
	Dry flat
	Hang to dry
	Dry on clothes hanger
	Tumble dry, normal heat
	Tumble dry, reduced heat
	Do not tumble dry

Water level and amount of detergent

Detergent dosage

- Use proper amount of detergent in conformity with the instructions of the detergent manufacturer.

Normal dosage

- Regular synthetic detergent: 30 gms per 30 litres of water.
- Concentrated detergent: 20 gms per 30 litres of water.

Laundry volume and detergent dosage reference

- Below is the reference dosage for common synthetic detergent.
- It is recommended to use low or mild foam powder.
- Detergent dosage is different for different kinds of wash programs.
- When the washing machine does not run properly, adjust clothes' volume or water level.
- The water volume listed below is based on normal clothes' volume.

Water Level	6.5 Kg/7.0 Kg		
	Water Volume (Approx)	Weight of Laundry (Approx)	Amount of Detergent
8	54 Litres	>4.5 kg	54 gms
7	45 Litres	~4.5 Kg	45 gms
6	42 Litres	~3.5 Kg	42 gms
5	39 Litres	~2.5 Kg	39 gms
4	36 Litres	~2.0 Kg	36 gms
3	33 Litres	~1.5 Kg	33 gms
2	30 Litres	~1.0 Kg	30 gms
1	26 Litres	~0.5 Kg	26 gms

Let's make washing easier.
Here is a list of clothes
and their approximate
weights to help you figure out
a perfect wash load.

Cloth Weight

Sheets

Cotton (double)	1 Kg
Cotton (single)	500 g
Non cotton (double)	650 g
Non cotton (single)	400 g

Pillow slips

Cotton pillow slips	110 g
Other pillow slips	85 g

Tablecloths

Small	230 g
Large	600 g
Table napkins (4)	150 g

Bedspread

	3 Kg
--	------

Blankets

Wool	2 Kg
Acrylic	1.5 Kg

Bottoms

Lungi/Dhoti	200 g
Skirts	200 g
Trousers	250 g
Jeans	400 g

Tops

Cotton shirts	280 g
Other shirts	200 g
Cotton blouses	140 g
Other blouses	100 g
Woollen sweaters	400 g
Heavy sweaters	300 g
Light sweaters	150 g

Other clothes

Cotton saree	650 g
Synthetic saree	350 g
Bath towels	600 g
Hand towels	250 g
Pyjama kurta	400 g
Panties	60 g
Cotton vests	100 g
Underslips	100 g
Long socks, 2 pairs	150 g
Short socks, 2 pairs	85 g
6 handkerchiefs	85 g
12 napkins	1.1 Kg

Laundry Items	6.5 Kg	7.0 Kg
Bath towels	2	2
Shirts	4	4
Blouses	2	3
Skirts	3	4
Pair of pants	1	1
Pairs of jeans	2	2
T-shirts	3	3
Sets of pyjamas	4	4
Tea towels	2	2

The chart indicates average weights of clothes. The recommended weight of your wash load should not be exceeded to ensure that your machine gives your clothes an effective wash. Suggested weights are approximate and may vary.



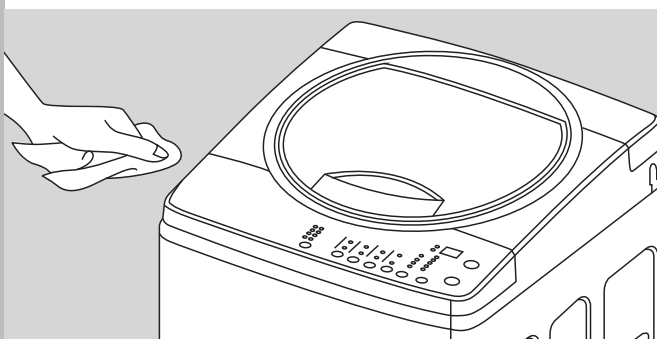
GET MORE FROM YOUR MACHINE

CARING FOR YOUR WASHING MACHINE

Proper care of your machine can extend its life. This section explains how to care for your washing machine properly and safely.

1 Cleaning your washing machine**Exterior**

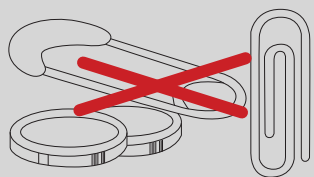
Wipe detergent, bleach, and other spills with a soft, damp cloth or sponge as they occur. Occasionally wipe the outside of the washing machine to keep it looking like new.

**Interior**

Run washing machine through a complete cycle with Tub Clean program and descalant. Follow the instructions of the descalant manufacturer and make sure that there is no laundry in the washing machine while using it. Only use proprietary non-corrosive descaling agents.

Caution

Do not put sharp or metal objects in your washing machine, or they can damage the clothes or machine. Check all pockets for pins, clips, coins, bolts, nuts, etc. Do not put these objects in your washing machine after emptying the pockets.

**2 Winter storage or moving care**

Install and store your washing machine where it will not freeze because some water may remain in the hoses. Freezing can damage your washing machine.

If storing or moving your washing machine during freezing weather, make sure to take the following precautions—

- Turn off the water faucet.
- Disconnect and drain the water inlet hoses.
- Run the washing machine on a drain and spin setting for 1 minute.
- Unplug the power supply cable.

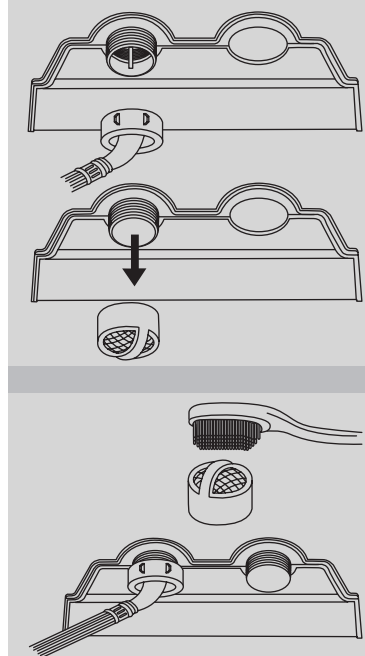
To use the washing machine again

- Flush the water pipes and hoses.
- Reconnect the water inlet hoses.
- Turn on the water faucet.
- Reconnect the power supply cable.

3 Non-use or vacation care

Operate your washing machine only when you are at home. If you will be on vacation or not use your washing machine for an extended period of time, you should—

- Unplug the power supply cable or electrical power to the washing machine.
- Turn off the water supply to the washing machine.
- This helps to avoid accidental flooding (due to water pressure surges) while you are away.



CLEANING OF YOUR WASHING MACHINE

1 Cleaning the Water Inlet Filter

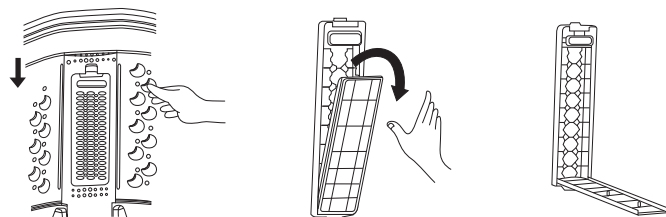
To clean the filter in the inlet valve

- Close the water faucet before turning OFF the power. Press the 'Start/Pause' button to remove water from the washing machine completely.
- Turn OFF the power before pulling out the power supply cable.
- Separate the Inlet Hose from the Inlet Valve.
- Pull the Inlet Filter out of the Inlet Valve.
- Remove the dirt from the Inlet Filter with a brush.
- Pull in the Inlet Filter and connect the Inlet Hose to the inlet valve tightly again.

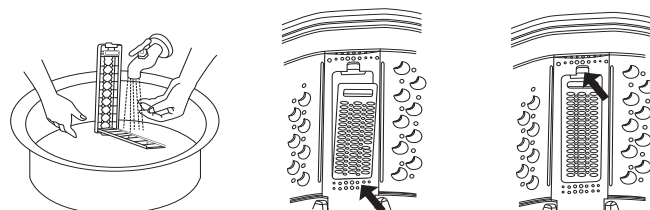
Note Presence of excess dirt/sediments/sand in water can affect the wash quality as well as the reliability of water inlet valve.

2 Cleaning the Tower Filter (Lint Filter)

- Clean the Tower Filter often to keep the washer clean.
- Push the upper part of the Tower Filter and pull out.
- Open the Tower Filter inner and remove the dirt.



- Clean the Tower Filter with water.
- Close the Tower Filter inner and insert the lower part of the Tower Filter in the drum first and then push the Tower Filter till you hear a 'click'.

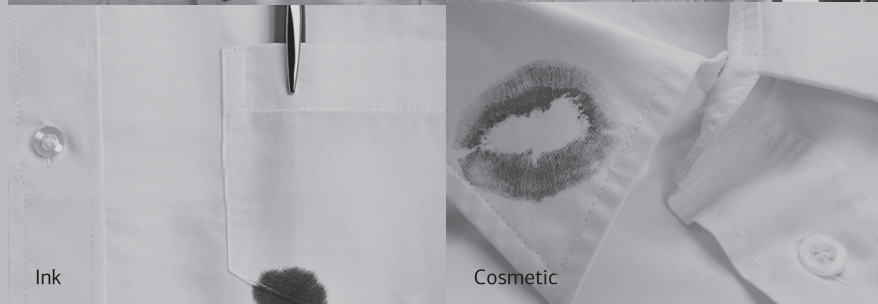


EASY TIPS TO REMOVE STAINS

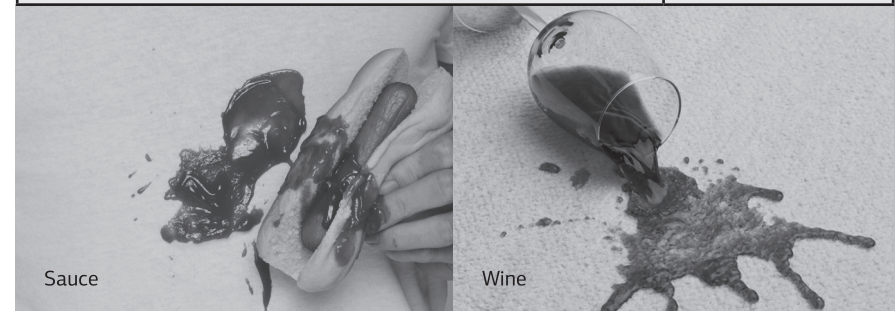
- Ensure you use warm water for soaking or pre-washing stained laundry.
- Fresh stains are easier to remove.
- Knowing what kind of stain it is, how old it is, what kind of fabric it is and whether the fabric is colour-fast (check the care label) always helps treat a stain better.
- Always start with cold or warm water as hot water can set in stains. Washing and drying can sometimes set in stains.
- When bleach is recommended, always use a fabric safe one.
- Put the stained area face down on a paper towel or white cloth. Apply the stain remover to the back of stain. This forces the stain off the fabric instead of through it.

TREATMENT	STAIN
Use ice in plastic bag to harden the gum. Scrape off what you can and then sponge with white spirits.	Adhesive Tape, Cement, Chewing Gum, Rubber
Rinse immediately in COLD water. If stain remains, soak in cold water with an enzyme pre-wash.	Blood
Scrape off surface wax. Place stain face down between paper towels. Press with warm iron until wax is absorbed. Replace paper towels frequently. Treat remaining stain with pre-wash stain remover or non-flammable dry cleaning fluid. Hand wash to remove solvent and wash using a bleach that is safe for fabric.	Candle Wax, Crayon
Sponge with COLD water and soak in enzyme pre-wash. If stain persists, rub in a little detergent and rinse in cold water.	Chocolate, Cocoa
Blot up quickly and rinse out in COLD water. Rub in a little detergent and wash in the maximum temperature allowed for the fabric type.	Coffee
Pre-treat with pre-wash stain remover or rub with bar soap.	Collars, Cuffs, Cosmetics

STAIN	TREATMENT
Cream, Ice cream, Milk	Rinse in COLD water and wash normally. If stain is still apparent, sponge with white spirits.
Deodorant	Rub affected area with white vinegar and then rinse out in COLD water. Sponge with white spirits. Treat stiffened areas with enzyme pre-wash.
Egg	Soak in a COLD enzyme pre-wash, rinse, wash normally.
Fabric Softener	Rub affected areas with bar soap and wash normally.
Fruit	Treat as soon as possible by sponging with COLD water. Rub a little detergent on the stain and wash normally.
Grass	Sponge with white spirits. Rub in an enzyme pre-wash and wash normally.
Grease, Oil	Lay the affected area face down on an absorbent cloth and work from the back. Sponge with white spirits or dry cleaning fluid. Wash normally.
Ink	Some inks may be impossible to remove and washing may even set it in. Use pre-wash stain remover, denatured alcohol or non-flammable dry cleaning fluid.
Iron, Rust	Apply lemon juice and salt and place in the sun. Wash normally



TREATMENT	STAIN
Wash in WARM water and detergent. Moisten area with lemon juice, dry in the sun and wash normally. If stain persists and fabric allows, use a bleach.	Mildew
Brush off dry mud and rinse in COLD water. If stain persists rub in a little detergent and wash normally.	Mud
May be impossible to remove in some cases. Place stain face down on paper towels. Apply nail polish remover to the back of stain. Repeat, placing paper towels frequently. Do not use acetate fabrics.	Nail polish
Scrape off any fresh paint and sponge with a non-flammable dry cleaning fluid and wash normally.	Paint—oil base
Treat while still wet, rinse in WARM water, wash normally.	Paint—water base
Dampen a cloth with hydrogen peroxide, lay it over the affected area and press with a fairly hot iron.	Scorch marks
Liquid: Pre-treat with a paste of granular detergent and water. Paste: Scrape residue from fabric. Pre-treat with pre-wash stain remover or non-flammable dry cleaning fluid. Apply detergent into dampened area and wash using bleach safe for fabric.	Shoe polish



USEFUL INFORMATION

TROUBLESHOOTING

When the washing machine does not function properly, check the following points before you contact your service provider.

SYMPTOM	DISPLAY MESSAGE	CHECK POINT
The washer will not operate at all.		<ul style="list-style-type: none"> Is there a power failure? Is the power supply cable correctly connected to an electric outlet? Is the electric fuse broken? Did you turn ON the power? Did you press the Start/Pause button?
Water is not supplied. If water supply is not finished within 10 minutes, the 'tP' message will light up.	tP	<ul style="list-style-type: none"> Did you connect the Inlet Hose and open the water tap? Is the Inlet Hose or water tap frozen? Is the water supply shut OFF? Does foreign matter block the Inlet Hose filter? Is the water pressure low?
Continuous water supply.	tP	<ul style="list-style-type: none"> The inlet valve is defective. The pressure sensor is defective. The PCB is defective. The pressure tube is loose or leaky? <i>Please contact your nearest IFB Care for help.</i>
No Spin.	SE	<ul style="list-style-type: none"> Safety switch Defective. No connection to safety switch. PCB Malfunction.

CHECK POINT	DISPLAY MESSAGE	SYMPTOM
<ul style="list-style-type: none"> If the clothes are collected on one side during spin the drum becomes unbalanced. The spin operation will be interrupted and this unbalanced condition will be automatically corrected by the program. However, if the unbalanced condition is unchanged despite the automatic program, the 'UE' message will light up. Is the lid (door) open? <i>The 'dO' message will light up in this case.</i> Are the clothes in the drum collected on one side? Is the washing machine installed on an uneven floor or is the vibration serious? 	dO UE	The washer will not spin.
<ul style="list-style-type: none"> Is the Drain Hose frozen? Is the Drain Hose blocked by dirt? Is the Drain Hose kinked or deformed? Is the Drain Hose placed too high? Is the end of the Drain Hose immersed in water? 	dE	The washer will not drain. If the drain is not finished within ~ 20 minutes, the 'dE' message will be displayed.
Machine will start automatically after the voltage decreases to safe operating level. If this error display persists or occurs frequently, contact your electrician to locate the fault in the electrical system.	Hi	Input voltage is too high.
Machine will start automatically after the voltage increases to safe operating level. If this error display persists or occurs frequently then contact your electrician to locate the fault in the electrical system.	Lo	Input voltage is too low.

SYMPTOM	DISPLAY MESSAGE	CHECK POINT
FH/FL: Input frequency is too high or low	FH	Machine will start automatically after the frequency decreases/increases to safe operating level. If this error display persists or occurs frequently, contact your electrician to locate the fault in the electrical system.
	FL	
Load sensing error	LE	The load sensing (detects the weight of load) is inferior. • Press the Power button to turn the power OFF. • Press the Power button to turn the power ON. • Operate your washing machine again. This error will also be displayed in case of overloading of clothes/motor overload/clutch malfunction/incorrect belt tension. <i>If the error display persists or occurs frequently, contact IFB Care.</i>
Water level sensing error	PS	The water level sensing is inferior. <i>Contact IFB Care.</i>
Motor error	EE	The motor is defective (open error). • Press the Power button to turn the power OFF. • Press the Power button to turn the power ON. • Operate your washing machine again. <i>If the error display persists or occurs frequently, contact IFB Care.</i>
Capacitor error	CE	The running capacitor is defective (open error). This error will also be displayed in case of overloading of clothes (above max capacity)/motor overload. <i>Contact IFB Care.</i>
Over Heat Error	OH	The heater is overheating. Press the 'Power' button to turn the power OFF. Press the 'Power' button to turn the power ON. Operate your washing machine again if the error display persists or occur frequently <i>Contact your nearest IFB care for help.</i>

TECHNICAL SPECIFICATIONS

MODEL	6.5 Kg/7.0 Kg
Power Supply	AC 220–240V/50 Hz
Dimensions WxDxH mm	570 x 590 x 950 (6.5 Kg) 570 x 590 x 970 (7 Kg)
Net Weight	35 Kg
Capacity	6.5 Kg of dry cotton (6.5 Kg) 7.0 Kg of dry cotton (7.0 Kg)
Wash Care Programs	6 Programs
Selector Buttons	Power, Start/Pause, Water, Temperature, Wash, Rinse, Spin, Delay
Program Selector	Program Button
Water Consumption	≤ 23 Ltr/Kg/Cycle (Smart Sense)
Water Pressure	0.3 Bar–8 Bar (3.5 Ltr–8 Ltr/min)
Power Consumption	360 W (6.5 Kg Smart Sense*) 370 W (7 Kg Smart Sense*)
Drum	Stainless Steel

*Program settings for BEE test in conformity with IEC 60456.





IFB
Set Yourself Free

CEO in the morning

Chef by evening
Indulge in your passion.
Do more with your time.
Set Yourself Free with IFB.

Installation report

Model _____ Serial no _____

Customer's name _____

Phone (residence) _____ (office) _____

Address _____

Installation check points

Machine delivered on _____

Machine installed on _____

Service engineer to tick appropriately

• Any major transit damage to the machine observed?	yes <input type="checkbox"/>	no <input type="checkbox"/>
• Condition of earthing? Plug Point (16 Amp 220–240 V AC with MCB or other automatic short circuit protection devices) good? If poor, has customer been advised to correct the same?	yes <input type="checkbox"/>	no <input type="checkbox"/>
• Advised to turn OFF machine after use?	yes <input type="checkbox"/>	no <input type="checkbox"/>
• Voltage cut out (high/low) fitted if voltage fluctuations high in area?	yes <input type="checkbox"/>	no <input type="checkbox"/>
• Machine levelling procedure and importance explained?	yes <input type="checkbox"/>	no <input type="checkbox"/>
• Detergents and bleach recommendation—relevant Detergent tray chambers explained?	yes <input type="checkbox"/>	no <input type="checkbox"/>
• Safety instructions explained?	yes <input type="checkbox"/>	no <input type="checkbox"/>
• Explained all features of washing machine to the customer?	yes <input type="checkbox"/>	no <input type="checkbox"/>
• Display function explained (if applicable)?	yes <input type="checkbox"/>	no <input type="checkbox"/>

Service engineer to tick appropriately•		
• Explained procedure for cleaning inlet hose filter?	yes <input type="checkbox"/>	no <input type="checkbox"/>
• Explained common error codes (if applicable)?	yes <input type="checkbox"/>	no <input type="checkbox"/>
• Explained unbalance error in Spin mode?	yes <input type="checkbox"/>	no <input type="checkbox"/>
• Explained program selection, program and button options (or knobs), indicator lamp/status LED/LCD function, buzzer function (if applicable)?	yes <input type="checkbox"/>	no <input type="checkbox"/>
• Explained troubleshooting?	yes <input type="checkbox"/>	no <input type="checkbox"/>
• Check following for proper order		
- Inlet hose	yes <input type="checkbox"/>	no <input type="checkbox"/>
- Detergent tray	yes <input type="checkbox"/>	no <input type="checkbox"/>
- Rat protection mesh cut-outs fitted	yes <input type="checkbox"/>	no <input type="checkbox"/>
- Drain hose	yes <input type="checkbox"/>	no <input type="checkbox"/>
• Informed user of need to keep drain hose straight and maximum height of draining?	yes <input type="checkbox"/>	no <input type="checkbox"/>
• Demo given to customer?	yes <input type="checkbox"/>	no <input type="checkbox"/>
• Warranty terms explained?	yes <input type="checkbox"/>	no <input type="checkbox"/>

Installed by _____ Signature _____

Customer’s response

The installation person was courteous and helpful yes ☐ no ☐

I would describe my experience with the process of installation as
Unacceptable ☐ Satisfactory ☐ Non-satisfactory ☐ Very satisfactory ☐

I certify that the above information and checks have been done to my satisfaction and I am fully satisfied with the installation of the washing machine.

Customer’s signature

Date

Time

Warranty—customer copy

Model _____

Serial no _____

Dealer’s name _____

Date of purchase _____

Customer’s name _____

Address _____

Phone _____

Email _____

NOT TO BE PRINTED

TITLE User Manual 6.5 Kg/7.0 Kg	Characteristic Symbol	
	Critical	(Cc)
	Significant	(Sc)
MATERIAL PAPER	Manual No TL421PKMAN013	Revision D
IFB Industries Limited, Goa		

REV	INFORMATION	CHANGE REF	DATE	CHECKED BY	DATE	APPROVED BY	DATE
A	New Steam models						
B	Customer Care number update		12-04-2022				
C	Addition of R2BRS 6.5 Kg mode		07-09-2022				
D	Details updated as per ECN 36341 and Customer Care number update		24-03-2023				

IFB Industries Ltd (the Company) warrants to the original domestic purchases of this washing machine (Appliance) that it is free from defects in workmanship and material. During 4 Years (48 months) from the date of purchase of the new washing machine all the parts of the washing machine which prove to be defective in workmanship and/or materials shall be replaced or repaired free of charge on intimation to the Company/Company's authorised service centre nearest to the place where the appliance is installed. During 10 years (120 months) from the date of purchase of the new washing machine, the motor which proves to be defective in workmanship and/or materials shall be replaced or repaired free of charge on intimation to the Company/Company's authorised service centre nearest to the place where the appliance is installed

The warranty is subject to limitations of warranty.

LIMITATIONS OF WARRANTY

- 1) This Warranty is not valid in case of the following events:
 - a) If the Warranty Card is not fully and properly filled in and signed at the time of purchase or installation by the Company's authorised dealer/service engineer.
 - b) If the completed Warranty Card is not presented to the authorised personnel at the time of service/repair.
 - c) If the appliance is not used in accordance with manufacturer's instructions given in the 'User Manual'
 - d) If the washing machine has been installed, serviced, repaired, opened or tampered with by unauthorised personnel
 - e) If defects arise/caused by accidents, alteration, misuse, neglect, abuse, substitution of original components with spurious/non genuine components, attack by household pests/rodents, fire, flood earthquake, lighting and/or any other acts of God/natural calamities.
 - f) If defect arise with unauthorised optional accessories such as trolley, rat mesh, machine cover, online filter, inlet/exhaust extension hose, tap adapter, extended power supply cable, adjustment feet cover etc.
 - g) If damages occur by improper electrical circuits outside the washing machine or by any electrical supply thereof
 - h) If the machine serial number on the appliance is defaced, missing or altered.
 - i) If sea water or any sub-standard detergent has been used in the appliance.
 - j) If the appliance is taken out of India.
- 2) This Warranty does not cover any type of painting or plating, including rusting etc or defects hereof.
- 3) The Company is not liable for any incidental or consequential damages.
- 4) Parts replaced or repaired under this Warranty are warrantied throughout the remaining of the original Warranty period
- 5) The Company is not liable for any delay in servicing due to reasons beyond the control of the Company or any of its authorised service centres.
- 6) This Warranty is not applicable if the washing machine is used for commercial purpose or at places such as institutions, hostels, hospitals, community halls or in other similar applications.
- 7) For any service under this Warranty beyond city/town/municipal limits from the Company/ authorised service centre, a fixed charge of ₹250 will be collected from the customer in addition to the actual to and fro charges by the shortest route. Alternatively, the customer can bring the appliance to the nearest service centre for carrying out the necessary repairs, at their own cost.
- 8) To avail the 10 years motor warranty, customers should get the machine serviced only by an IFB authorised service partner.
- 9) Any issue other than the motor arising outside the warranty period of 4 years, will be repaired on a chargeable basis.
- 10) Repair/service charges for any issue with the motor outside the 10 years motor warranty period, will be payable by the customer.
- 11) IFB's decision in this regard shall be final and binding on the customer.

